

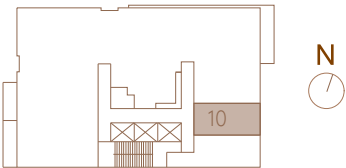
SYLVIE

372 sq.ft.
Studio
One Bath

ADAGIO



Floors 9-11



*Prices, sizes and specifications subject to change without notice. E.&O.E. The dimensions shown of this plan are approximate and subject to normal construction variances. Actual useable floor space within the unit may vary from any stated floor areas or dimensions on this plan. Furniture is displayed for illustration purposes only and does not necessarily reflect the electrical, cable or internet outlets. Suites are sold unfurnished. For more information on the method used for calculating the floor area of any unit, reference should be made to Home Construction Regulatory Authority ("HCRA") Directive.

ALMA

383 sq.ft.

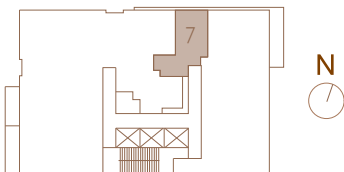
Studio

One Bath

ADAGIO



Floors 9-11

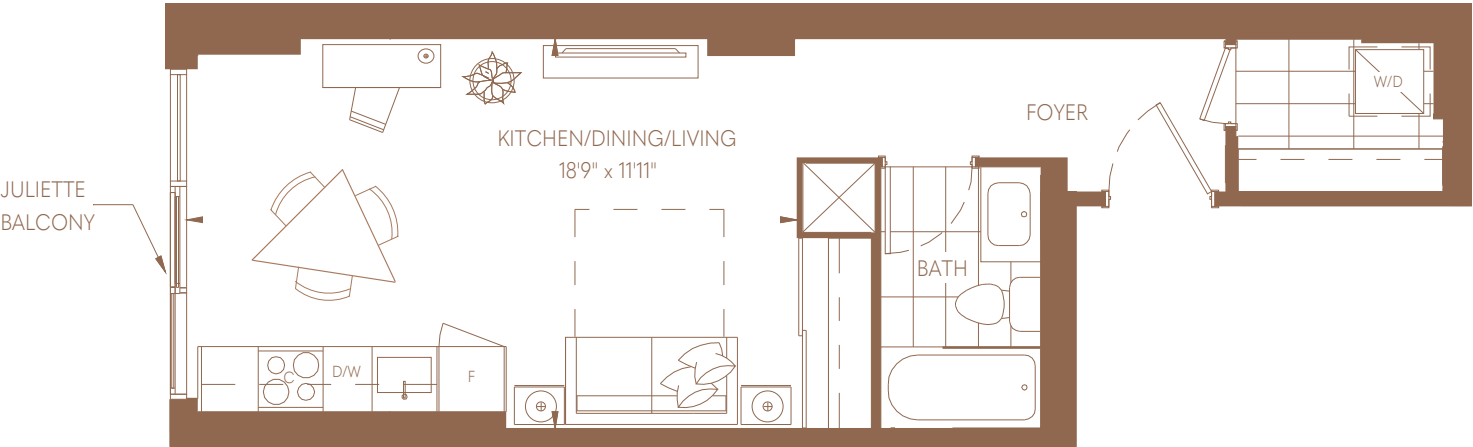


*Prices, sizes and specifications subject to change without notice. E.&O.E. The dimensions shown of this plan are approximate and subject to normal construction variances. Actual useable floor space within the unit may vary from any stated floor areas or dimensions on this plan. Furniture is displayed for illustration purposes only and does not necessarily reflect the electrical, cable or internet outlets. Suites are sold unfurnished. For more information on the method used for calculating the floor area of any unit, reference should be made to Home Construction Regulatory Authority ("HCRA") Directive.

GABRIELLE

450 sq.ft.
Studio
One Bath

ADAGIO



Floors 9-11



*Prices, sizes and specifications subject to change without notice. E.&O.E. The dimensions shown of this plan are approximate and subject to normal construction variances. Actual useable floor space within the unit may vary from any stated floor areas or dimensions on this plan. Furniture is displayed for illustration purposes only and does not necessarily reflect the electrical, cable or internet outlets. Suites are sold unfurnished. For more information on the method used for calculating the floor area of any unit, reference should be made to Home Construction Regulatory Authority ("HCRA") Directive.

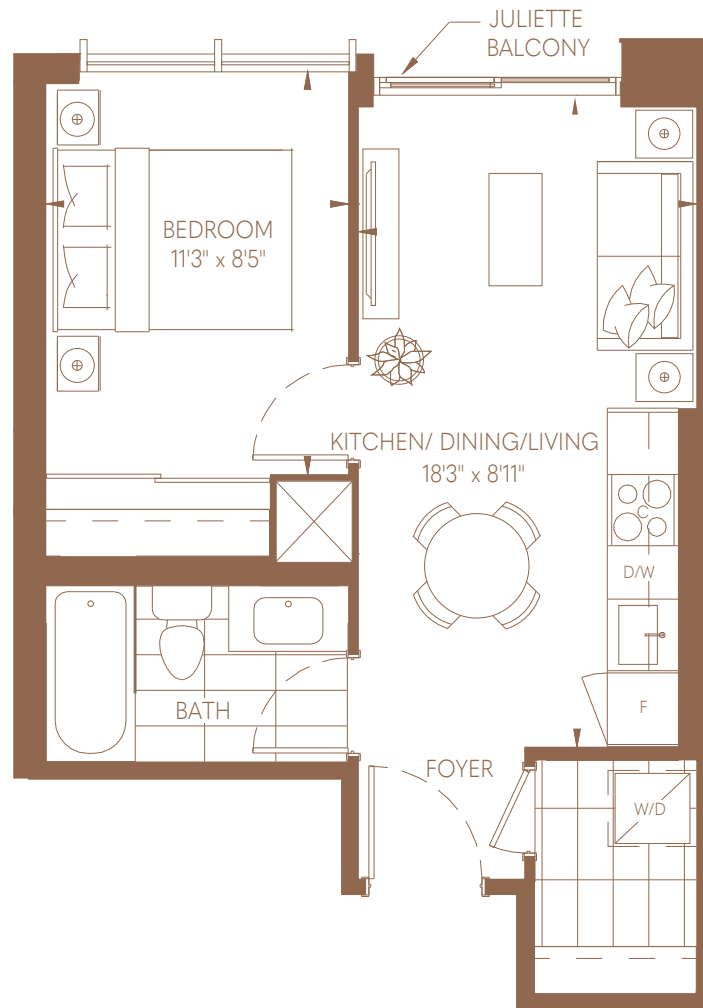
MARMONT

433 sq.ft.

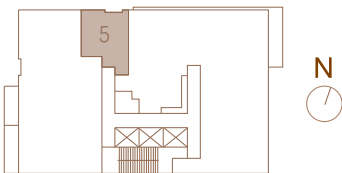
One Bedroom

One Bath

ADAGIO



Floors 9-11



*Prices, sizes and specifications subject to change without notice. E.&O.E. The dimensions shown of this plan are approximate and subject to normal construction variances. Actual useable floor space within the unit may vary from any stated floor areas or dimensions on this plan. Furniture is displayed for illustration purposes only and does not necessarily reflect the electrical, cable or internet outlets. Suites are sold unfurnished. For more information on the method used for calculating the floor area of any unit, reference should be made to Home Construction Regulatory Authority ("HCRA") Directive.

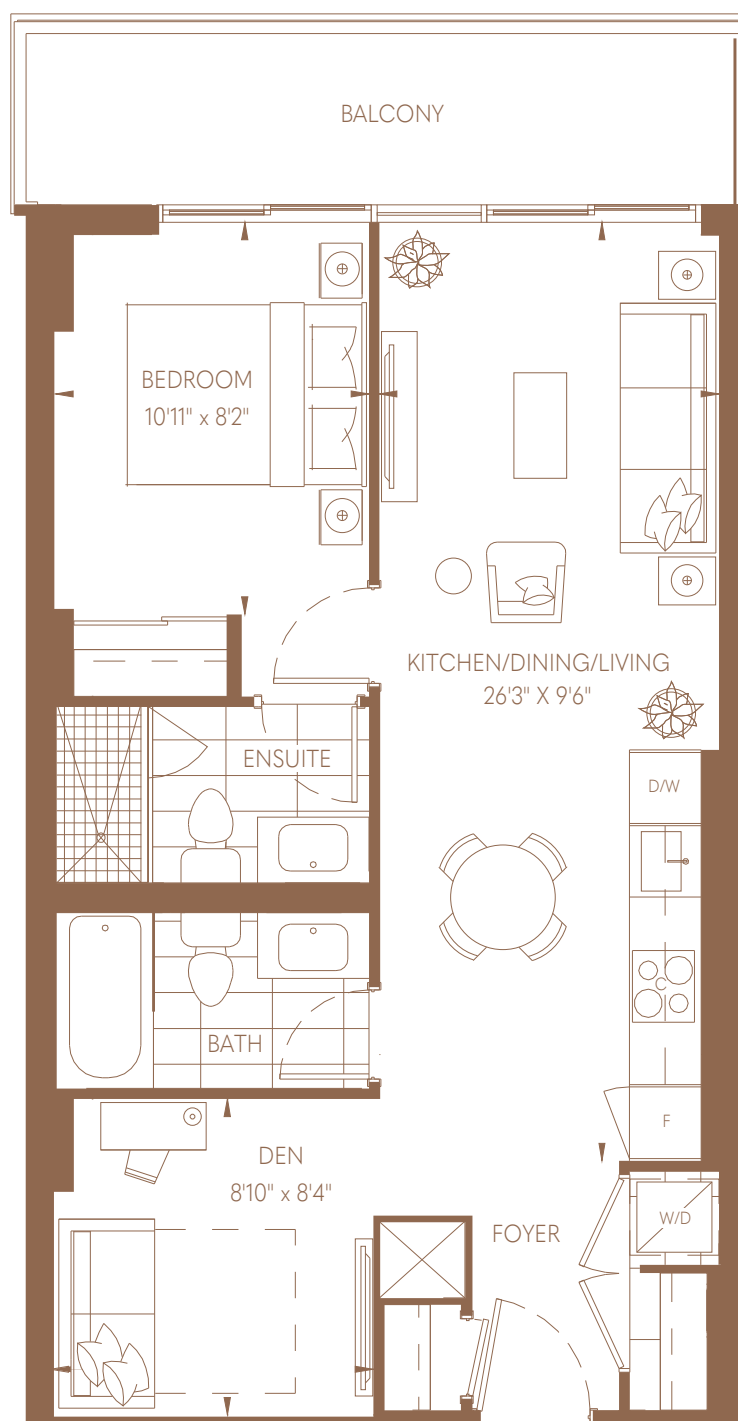
ANTIGONA

675 sq.ft.

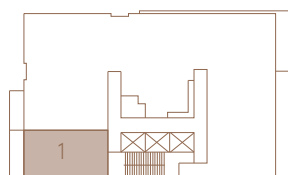
One Bedroom + Den

Two Bath

ADAGIO



Floors 9-11



*Prices, sizes and specifications subject to change without notice. E.&O.E. The dimensions shown of this plan are approximate and subject to normal construction variances. Actual useable floor space within the unit may vary from any stated floor areas or dimensions on this plan. Furniture is displayed for illustration purposes only and does not necessarily reflect the electrical plan for the suite. Suites are sold unfurnished. For more information on the method used for calculating the floor area of any unit, reference should be made to Home Construction Regulatory Authority ("HCRA") Directive.

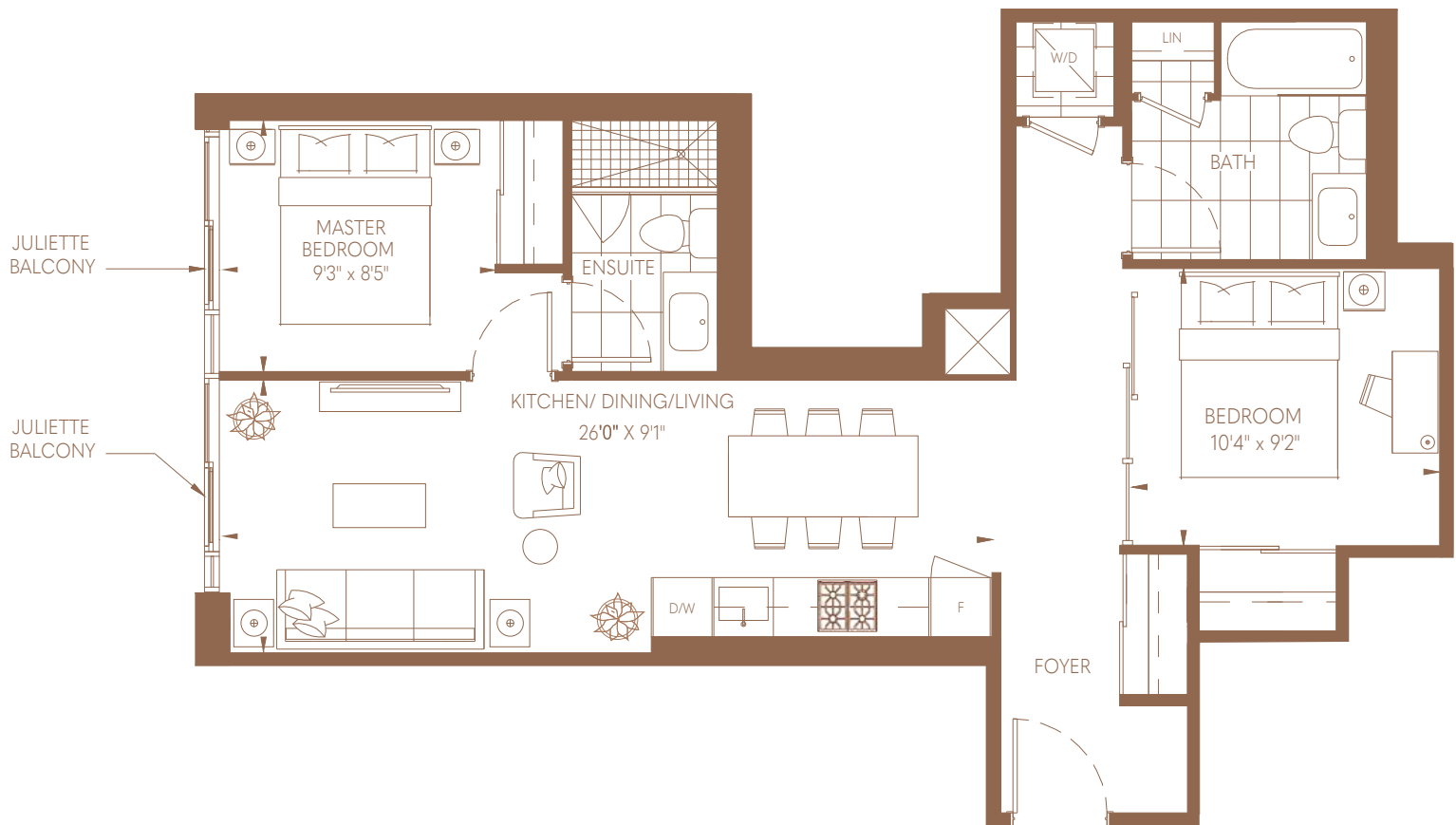
MAMBO

773 sq.ft.

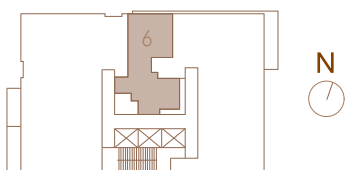
Two Bedroom

Two Bath

ADAGIO



Floors 9-11



*Prices, sizes and specifications subject to change without notice. E.&O.E. The dimensions shown of this plan are approximate and subject to normal construction variances. Actual useable floor space within the unit may vary from any stated floor areas or dimensions on this plan. Furniture is displayed for illustration purposes only and does not necessarily reflect the electrical, cable or internet outlets. Suites are sold unfurnished. For more information on the method used for calculating the floor area of any unit, reference should be made to Home Construction Regulatory Authority ("HCRA") Directive.

MODERATO

687 sq.ft.
Two Bedroom
Two Bath

ADAGIO



*Prices, sizes and specifications subject to change without notice. E.&O.E. The dimensions shown of this plan are approximate and subject to normal construction variances. Actual useable floor space within the unit may vary from any stated floor areas or dimensions on this plan. Furniture is displayed for illustration purposes only and does not necessarily reflect the electrical, cable or internet outlets. Suites are sold unfurnished. For more information on the method used for calculating the floor area of any unit, reference should be made to Home Construction Regulatory Authority ("HCRA") Directive.

ALLEGRO

905 sq.ft.
Two Bedroom
Two Bath

ADAGIO



*Prices, sizes and specifications subject to change without notice. E.&O.E. The dimensions shown of this plan are approximate and subject to normal construction variances. Actual useable floor space within the unit may vary from any stated floor areas or dimensions on this plan. Furniture is displayed for illustration purposes only and does not necessarily reflect the electrical, cable or internet outlets. Suites are sold unfurnished. For more information on the method used for calculating the floor area of any unit, reference should be made to Home Construction Regulatory Authority ("HCRA") Directive.

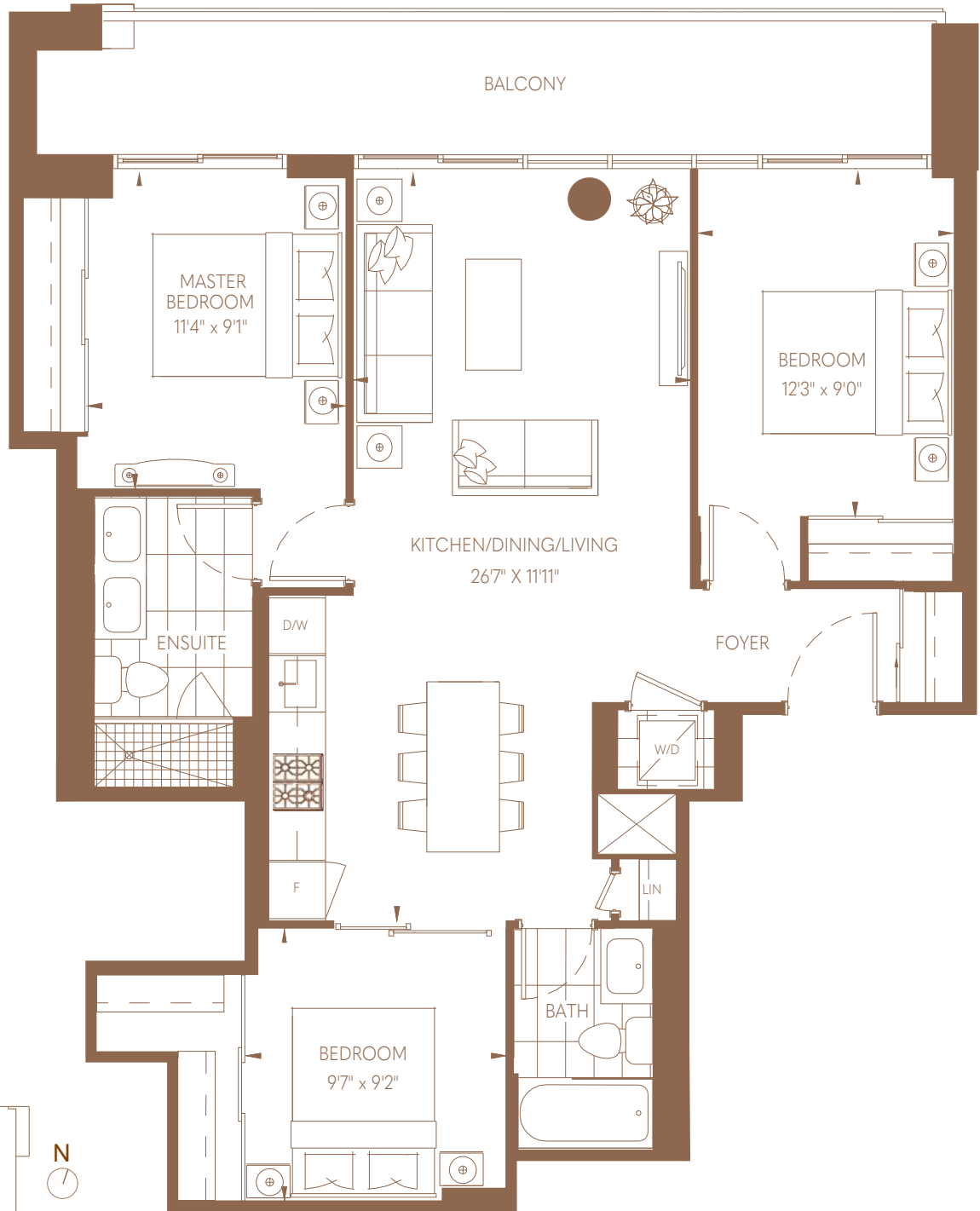
SALSA

973 sq.ft.

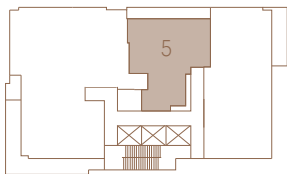
Three Bedroom

Two Bath

ADAGIO



Floors 22-28



*Prices, sizes and specifications subject to change without notice. E.&O.E. The dimensions shown of this plan are approximate and subject to normal construction variances. Actual useable floor space within the unit may vary from any stated floor areas or dimensions on this plan. Furniture is displayed for illustration purposes only and does not necessarily reflect the electrical, cable or internet outlets. Suites are sold unfurnished. For more information on the method used for calculating the floor area of any unit, reference should be made to Home Construction Regulatory Authority ("HCRA") Directive.