



PH 5101 •
Three Bedrooms

Enclosed Area : 1476 sq.ft. | Outdoor Area : 213 sq.ft.

Total Area : 1689 sq.ft.

Interior features

- 1 Miele Appliances
- 2 Kitchen Storage Organizer
- 3 Blum Kitchen Hardware
- 4 Miele Washer/Dryer
- 5 Kohler/Grohe Bathroom Plumbing Fixtures
- 6 Closet Organizer System
- 7 Roller - Shades

Exterior features

- 8 Radiant Ceiling Heaters
- 9 Composite Wood Decking



Image is simulating the view between 50°-55°N. Actual views may be noticeably different than what is depicted in photographs and renderings. Any view from a suite may in the future be limited or eliminated by future developments. No guarantees that existing or future views of the condominiums will be provided or, if provided, will be as depicted or described herein. The developer reserves the right to make modifications, substitutions, change brands, sizes, colours, materials, ceiling heights, and make minor revisions to interior wall locations and exterior window systems. All materials and drawings are approximate. Specifications are subject to change without notice. Actual square footage may vary from the stated floorplan. Furniture shown on plans are for illustration purposes only and are not included. E. & O. E.



Lower Floor



Upper Floor

PH 5102 •
Three Bedrooms + Den

Enclosed Area : 1490 sq.ft. | Outdoor Area : 334 sq.ft.

Total Area : 1824 sq.ft.

Interior features

- ① Miele Appliances
- ② Kitchen Storage Organizer
- ③ Blum Kitchen Hardware
- ④ Miele Washer/Dryer
- ⑤ Kohler/Grohe Bathroom Plumbing Fixtures
- ⑥ Closet Organizer System
- ⑦ Roller - Shades

Exterior features

- ⑧ Radiant Ceiling Heaters
- ⑨ Composite Wood Decking

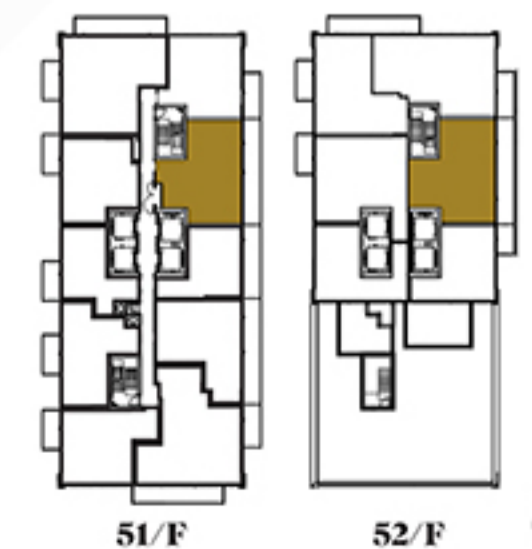
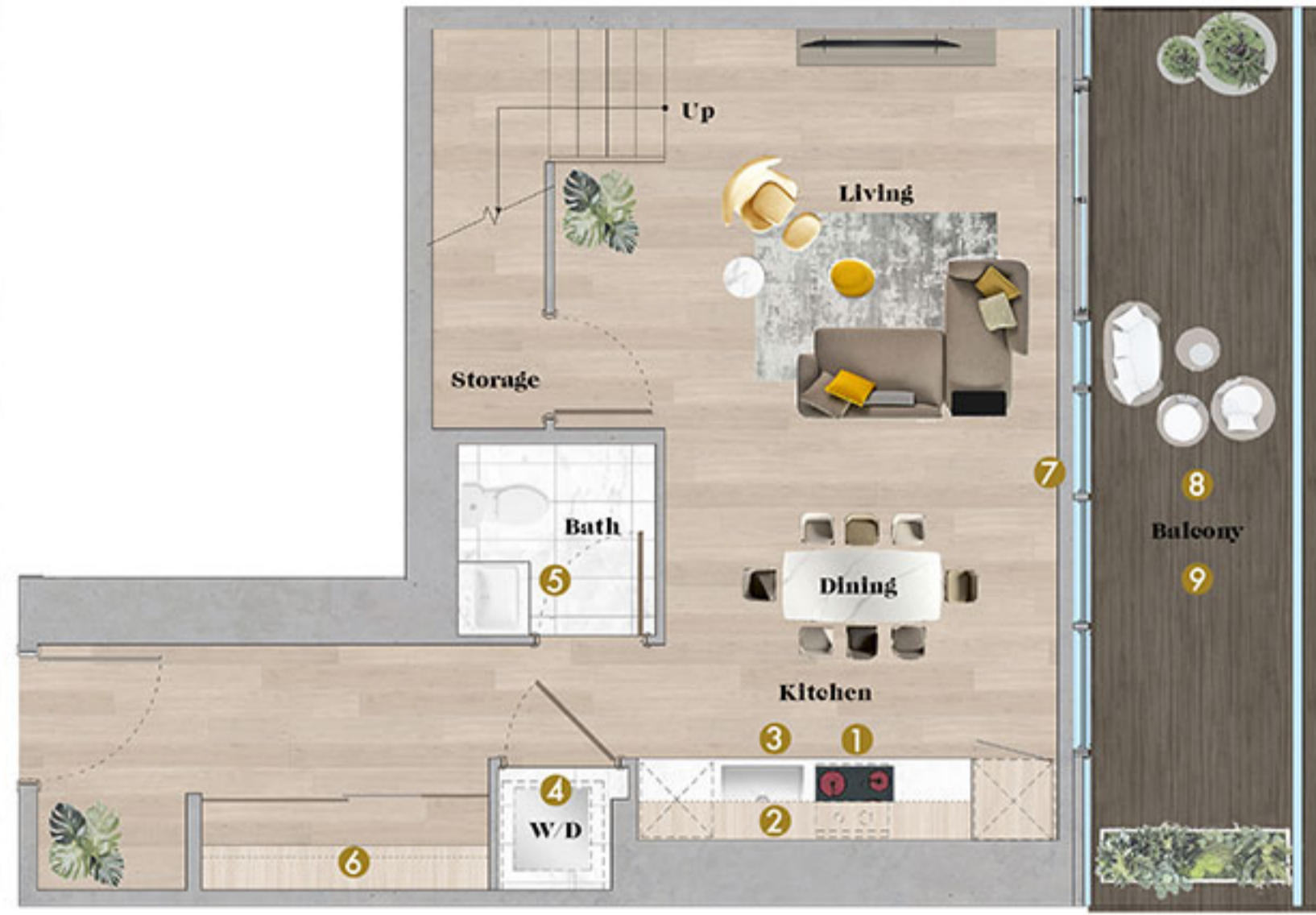


Image is simulating the view between 56F-55F. Actual views may be noticeably different than what is depicted in photographs and renderings. Any view from a suite may in the future be limited or eliminated by future developments. No guarantees that existing or future views of the condominium will be provided or, if provided, will be as depicted or described herein. The developer reserves the right to make modifications, substitutions, change brands, sizes, colours, materials, ceiling heights, and make minor revisions to interior wall locations and exterior window system. All materials and drawings are approximate. Specifications are subject to change without notice. Actual square footage may vary from the stated floorplan. Furniture shown on plans are for illustration purposes only and are not included. E. & O. E.



Lower Floor



Upper Floor



**PH 5103 •
Two Bedrooms**

Enclosed Area : 1001 sq.ft. | Outdoor Area : 461 sq.ft.

Total Area : 1462 sq.ft.

Interior features

- 1 Miele Appliances
- 2 Kitchen Storage Organizer
- 3 Blum Kitchen Hardware
- 4 Miele Washer/Dryer
- 5 Kohler/Grohe Bathroom Plumbing Fixtures
- 6 Closet Organizer System
- 7 Roller - Shades

Exterior features

- 8 Radiant Ceiling Heaters
- 9 Composite Wood Decking

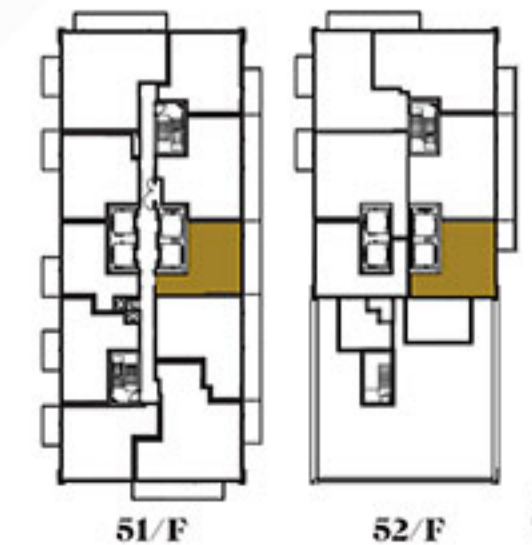


Image is simulating the view between 56F-55F. Actual views may be noticeably different than what is depicted in photographs and renderings. Any view from a suite may in the future be limited or eliminated by future developments. No guarantees that existing or future views of the condominiums will be provided or, if provided, will be as depicted or described herein. The Developer reserves the right to make modifications, substitutions, change brands, sizes, colours, materials, ceiling heights, and make minor revisions to interior wall locations and exterior window system. All materials and drawings are approximate. Specifications are subject to change without notice. Actual square footage may vary from the stated floorplan. Furniture shown on plans are for illustration purposes only and are not included. E. & O. E.



**PH 5109 •
Two Bedrooms**

Enclosed Area : 1031 sq.ft. | Outdoor Area : 277 sq.ft.

Total Area : 1308 sq.ft.

Interior features

- 1 Miele Appliances
- 2 Kitchen Storage Organizer
- 3 Blum Kitchen Hardware
- 4 Miele Washer/Dryer
- 5 Kohler/Grohe Bathroom Plumbing Fixtures
- 6 Closet Organizer System
- 7 Roller - Shades

Exterior features

- 8 Radiant Ceiling Heaters
- 9 Composite Wood Decking

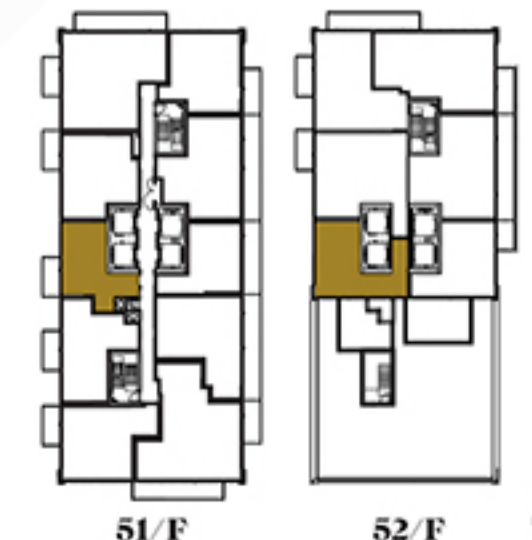


Image is simulating the view between 56°-55°N. Actual views may be noticeably different than what is depicted in photographs and renderings. Any view from a suite may in the future be limited or eliminated by future developments. No guarantees that existing or future views of the condominiums will be provided or, if provided, will be as depicted or described herein. The developer reserves the right to make modifications, substitutions, change brands, sizes, colours, materials, ceiling heights, and make minor revisions to interior wall locations and exterior window system. All materials and drawings are approximate. Specifications are subject to change without notice. Actual square footage may vary from the stated floorplan. Furniture shown on plans are for illustration purposes only and are not included. E. & O. E.



PH 5110 •
Two Bedrooms + Den

Enclosed Area : 1360 sq.ft. | Outdoor Area : 120 sq.ft.

Total Area : 1480 sq.ft.

Interior features

- 1 Miele Appliances
- 2 Kitchen Storage Organizer
- 3 Blum Kitchen Hardware
- 4 Miele Washer/Dryer
- 5 Kohler/Grohe Bathroom Plumbing Fixtures
- 6 Closet Organizer System
- 7 Roller - Shades

Exterior features

- 8 Radiant Ceiling Heaters
- 9 Composite Wood Decking

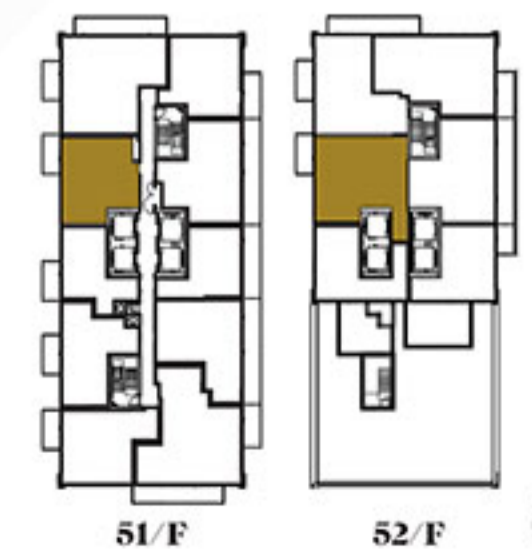
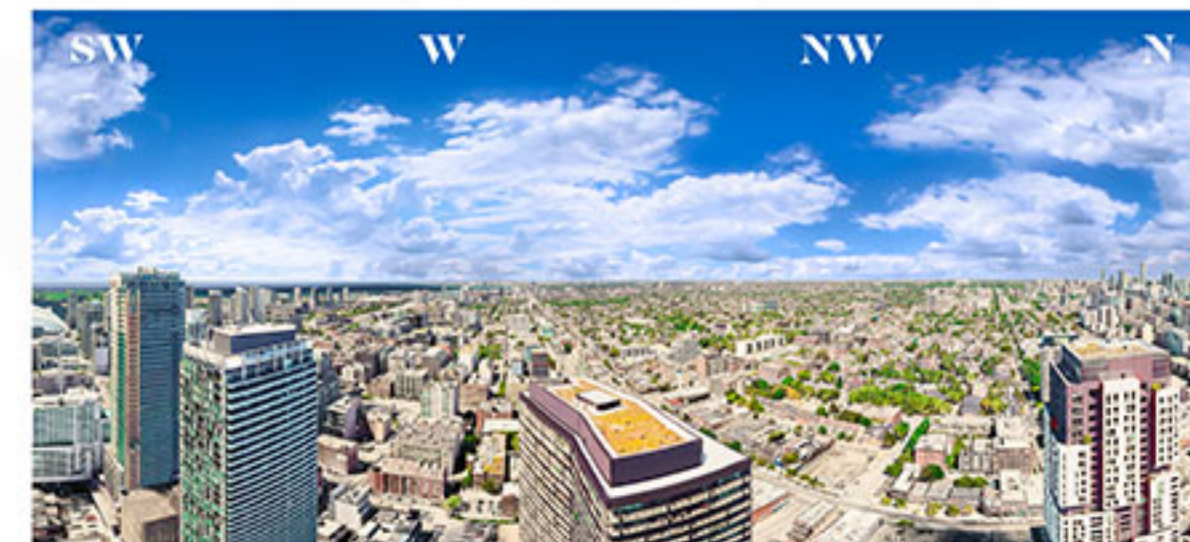


Image is simulating the view between 56°-55°N. Actual views may be noticeably different than what is depicted in photographs and renderings. Any view from a suite may in the future be limited or eliminated by future developments. No guarantees that existing or future views of the condominiums will be provided or, if provided, will be as depicted or described herein. The developer reserves the right to make modifications, substitutions, change brands, sizes, colours, materials, ceiling heights, and make minor revisions to interior wall locations and exterior window system. All materials and drawings are approximate. Specifications are subject to change without notice. Actual square footage may vary from the stated floorplan. Furniture shown on plans are for illustration purposes only and are not included. E. & O. E.



**PH 5111 •
Three Bedrooms**

Enclosed Area : 1632 sq.ft. | Outdoor Area : 329 sq.ft.

Total Area : 1961 sq.ft.

Interior features

- 1 Miele Appliances
- 2 Kitchen Storage Organizer
- 3 Blum Kitchen Hardware
- 4 Miele Washer/Dryer
- 5 Kohler/Grohe Bathroom Plumbing Fixtures
- 6 Closet Organizer System
- 7 Roller - Shades

Exterior features

- 8 Radiant Ceiling Heaters
- 9 Composite Wood Decking

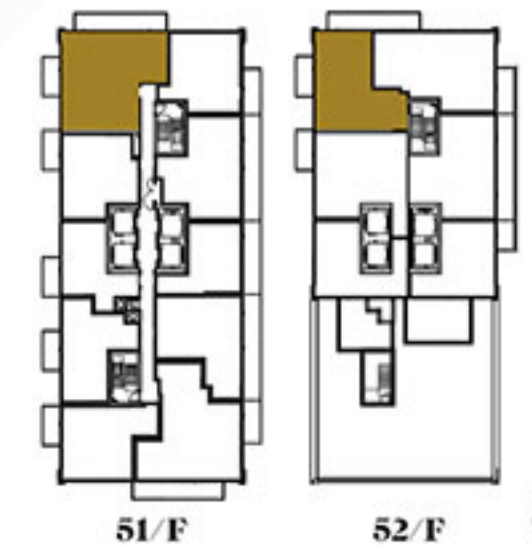
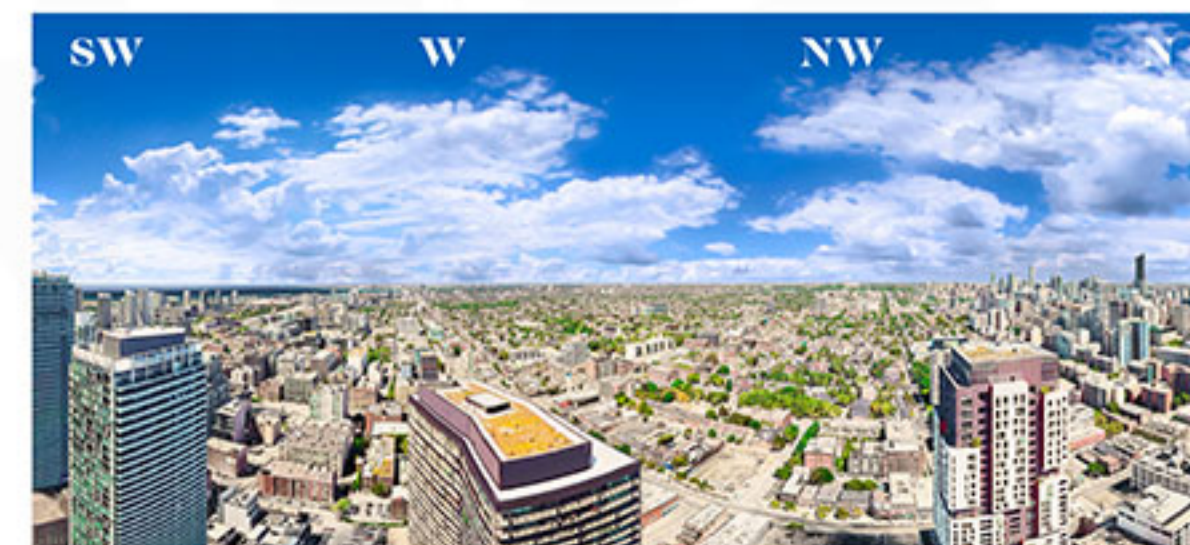


Image is simulating the view between 56° - 55.6°. Actual views may be noticeably different than what is depicted in photographs and renderings. Any view from a suite may in the future be limited or eliminated by future developments. No guarantees that existing or future views of the condominiums will be provided or, if provided, will be as depicted or described herein. The developer reserves the right to make modifications, substitutions, change brands, sizes, colours, materials, ceiling heights, and make minor revisions to interior wall locations and exterior window systems. All materials and drawings are approximate. Specifications are subject to change without notice. Actual square footage may vary from the stated floorplan. Furniture shown on plans are for illustration purposes only and are not included. E. & O. E.