

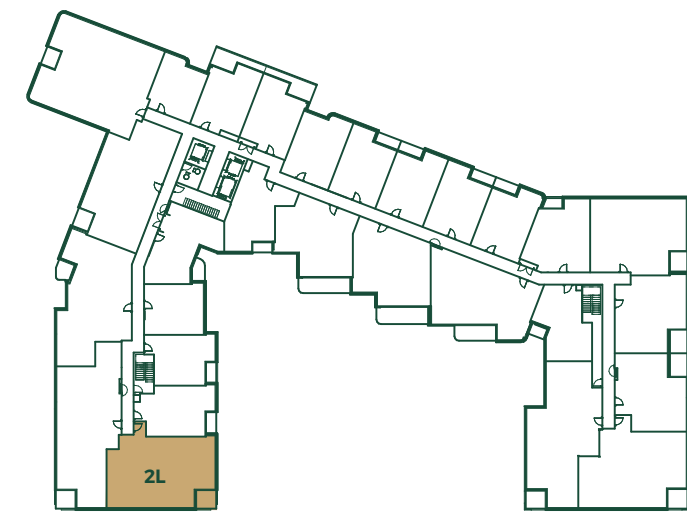
EDENBRIDGE™
KINGSWAY

Suites

2L

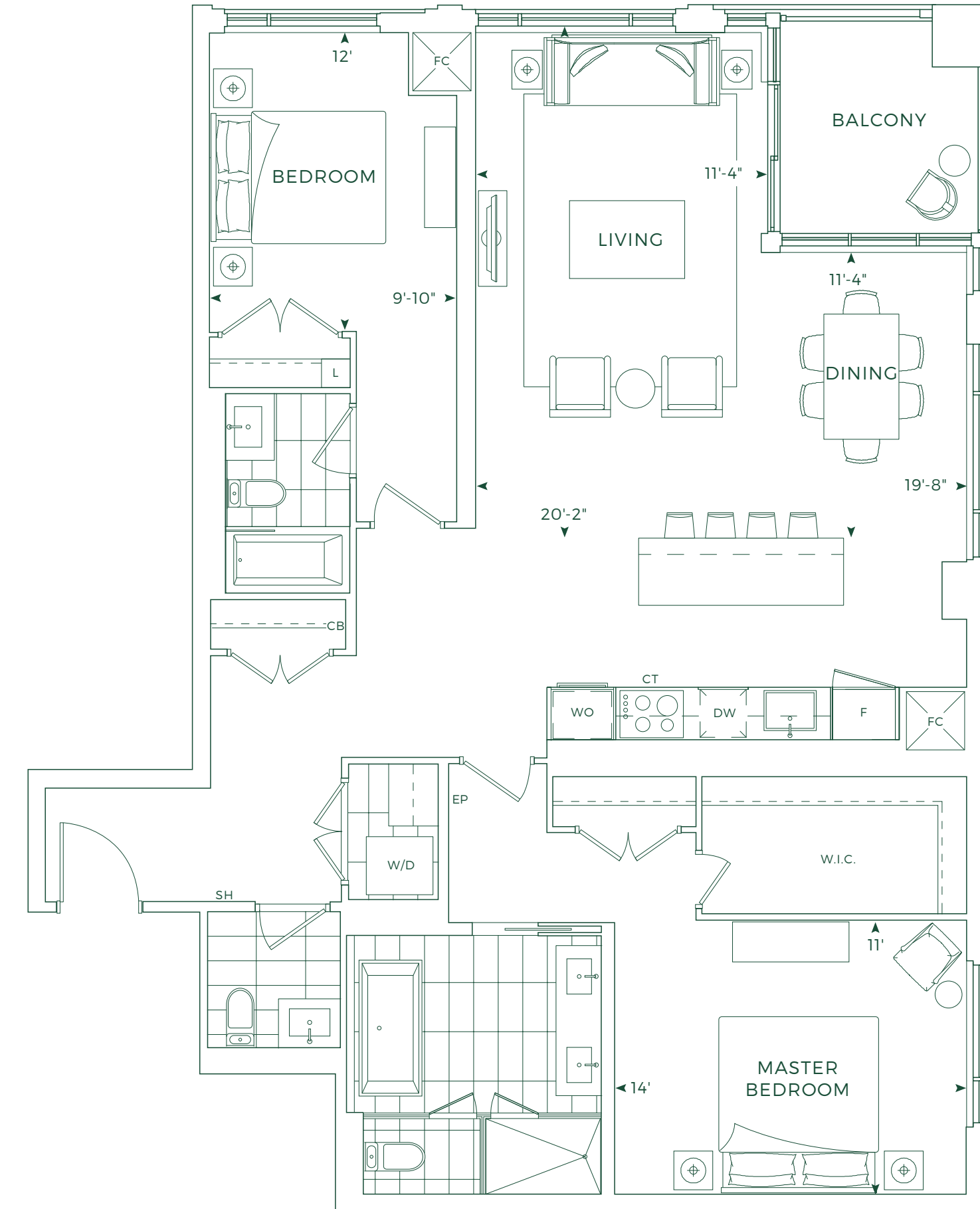
1,464 SQ.FT.

2 BEDROOMS, 2.5 BATHROOMS



FLOOR 3-5

© Tridel 2019. Tridel, "2L" design, Tridel Built for Life, Tridel Built for Life Design, and Tridel Built Green Built for Life are registered Trademarks of Tridel Corporation. Project names and logos are Trademarks of their respective owners. All rights reserved. Building and view not to scale. All dimensions are approximate and subject to normal construction variances. Dimensions may exceed the usable floor area. Some features and finishes herein are upgrades or are for illustrative purposes only and may not be available. Furniture is displayed for illustrative purposes only and does not necessarily reflect the electrical plan for the suite. Suites are sold unfurnished. Balcony, terrace and ledge variations may apply; contact a sales representative for further details. Furniture, BBQs and planter locations on balcony/terraces are for illustration purposes only and subject to change. Illustrations are artist's concept only. Sizes and specifications subject to change without notice. E. & O. E. June 2019.



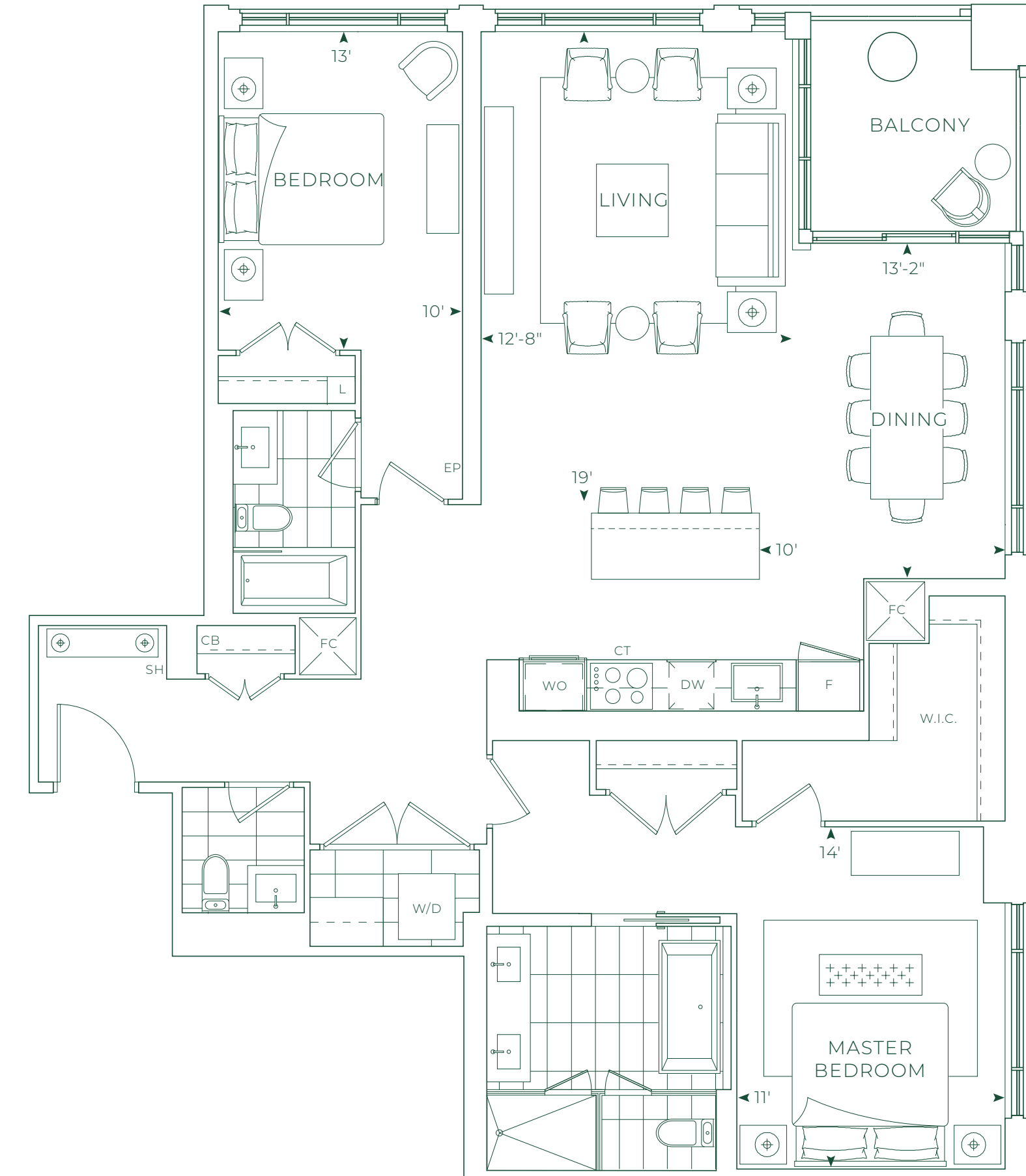
2M

1,497 SQ.FT.

2 BEDROOMS, 2.5 BATHROOMS



FLOOR 3-5



© Tridel 2019. Tridel, "2M" design, Tridel Built for Life, Tridel Built for Life Design, and Tridel Built Green Built for Life are registered trademarks of Tridel Corporation. Project names and logos are trademarks of their respective owners. All rights reserved. Building and view not to scale. All dimensions are approximate and subject to normal construction variances. Dimensions may exceed the usable floor area. Some features and finishes herein are upgrades or are for illustrative purposes only and may not be available. Furniture is displayed for illustrative purposes only and does not necessarily reflect the electrical plan for the suite. Suites are sold unfurnished. Balcony, terrace and ledge variations may apply; contact a sales representative for further details. Furniture, BBQs and planter locations on balcony/terraces are for illustration purposes only and subject to change. Illustrations are artist's concept only. Sizes and specifications subject to change without notice. E. & O. E. June 2019.

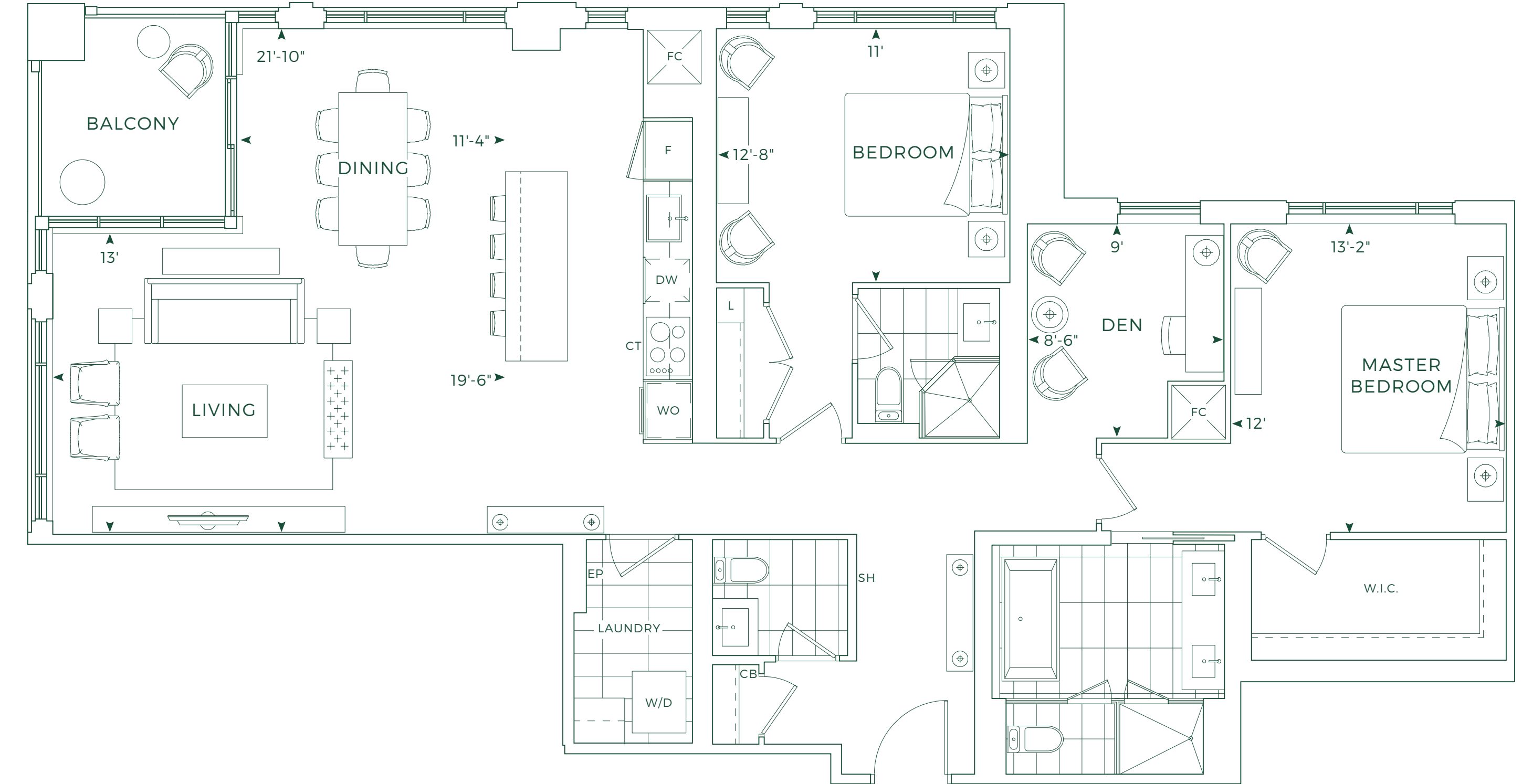
2S+D

1,620 SQ.FT.

2 BEDROOMS + DEN, 2.5 BATHROOMS



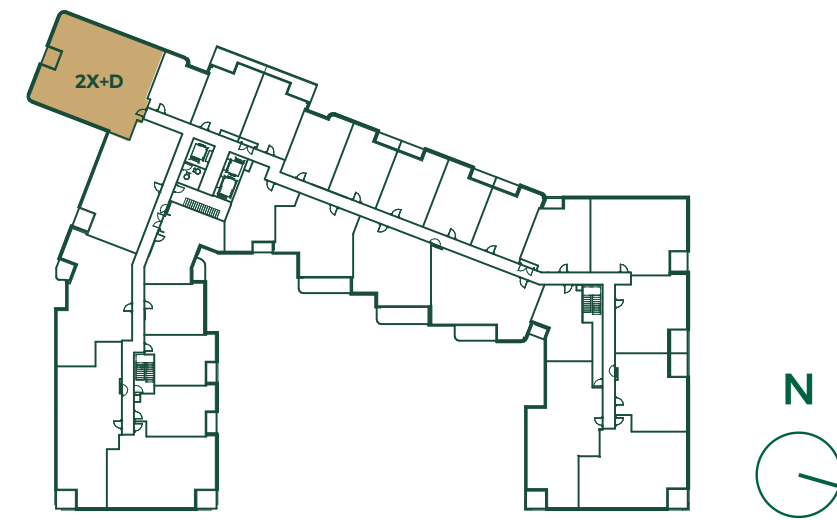
FLOOR 3-5



2X+D

2,014 SQ.FT.

2 BEDROOMS + DEN, 2.5 BATHROOMS



FLOOR 3



© Tridel 2019. Tridel, "2X+D" design, Tridel Built for Life, Tridel Built for Life Design, and Tridel Built Green Built for Life are registered Trademarks of Tridel Corporation. Project names and logos are Trademarks of their respective owners. All rights reserved. Building and view not to scale. All dimensions are approximate and subject to normal construction variances. Dimensions may exceed the usable floor area. Some features and finishes herein are upgrades or are for illustrative purposes only and may not be available. Furniture is displayed for illustrative purposes only and does not necessarily reflect the electrical plan for the suite. Suites are sold unfurnished. Balcony, terrace and ledge variations may apply, contact a sales representative for further details. Furniture, BBQs and planter locations on balcony/terraces are for illustrative purposes only and subject to change. Illustrations are artist's concept only. Sizes and specifications subject to change without notice. E. & O. E. June 2019.

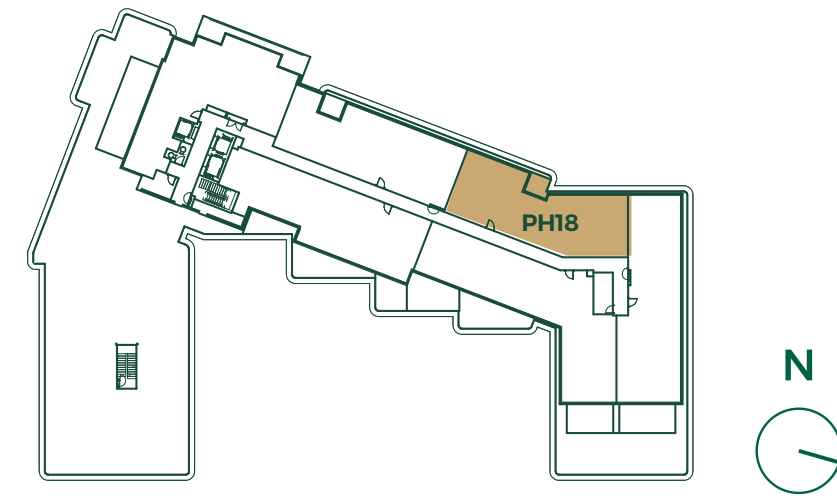
EDENBRIDGE™
KINGSWAY

Penthouse Suites

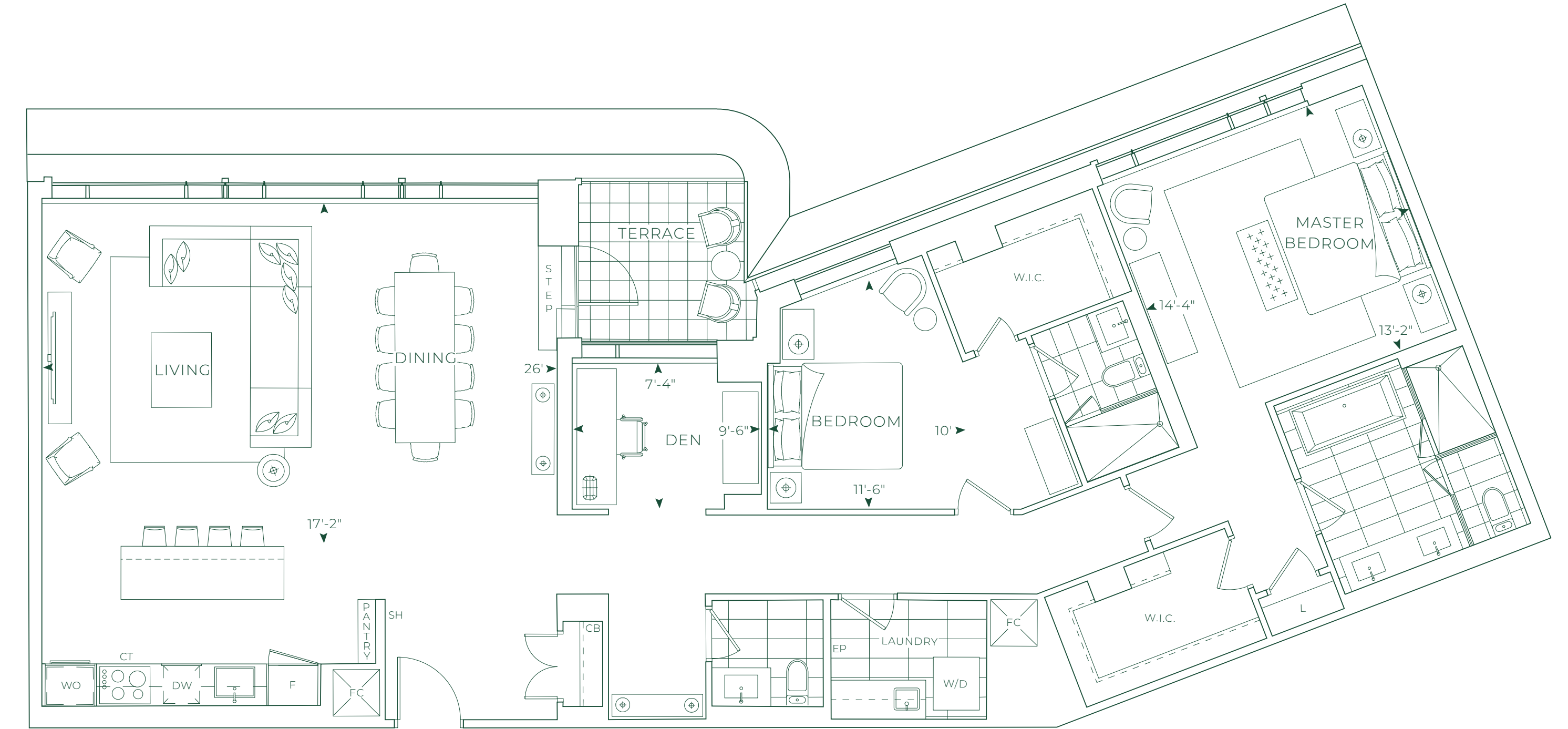
PENTHOUSE 18

1,868 SQ.FT.

2 BEDROOMS + DEN, 2.5 BATHROOMS



PENTHOUSE

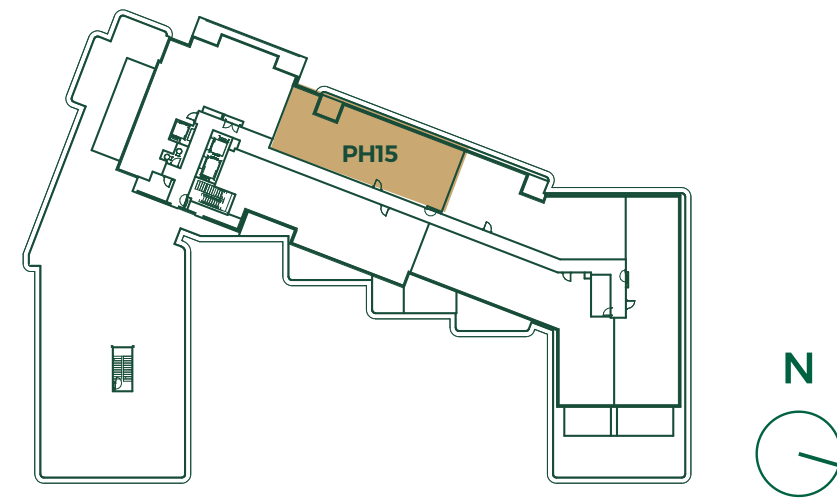


© Tridel 2019. Tridel, "D" design, Tridel Built for Life, Tridel Built for Life Design, and Tridel Built Green Built for Life are registered Trademarks of Tridel Corporation. Project names and logos are Trademarks of their respective owners. All rights reserved. Building and view not to scale. All dimensions are approximate and subject to normal construction variances. Dimensions may exceed the usable floor area. Some features and finishes herein are upgrades or are for illustrative purposes only and may not be available. Furniture is displayed for illustration purposes only and does not necessarily reflect the electrical plan for the suite. Suites are sold unfurnished. Balcony, terrace and facade variations may apply; contact a sales representative for further details. Furniture, BBQs and planter locations on balcony/terraces are for illustration purposes only and subject to change. Illustrations are artist's concept only. Sizes and specifications subject to change without notice. E. & O. E. June 2019.

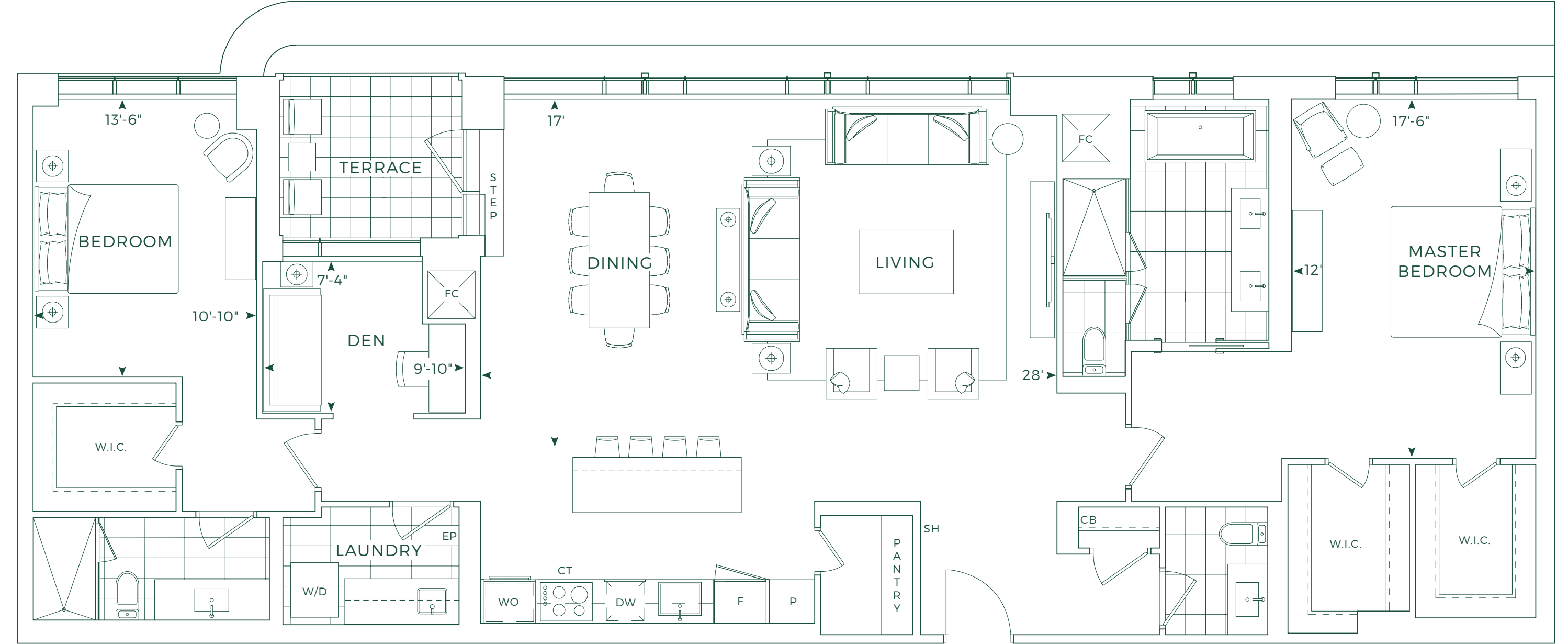
PENTHOUSE 15

1,977 SQ.FT.

2 BEDROOMS + DEN, 2.5 BATHROOMS



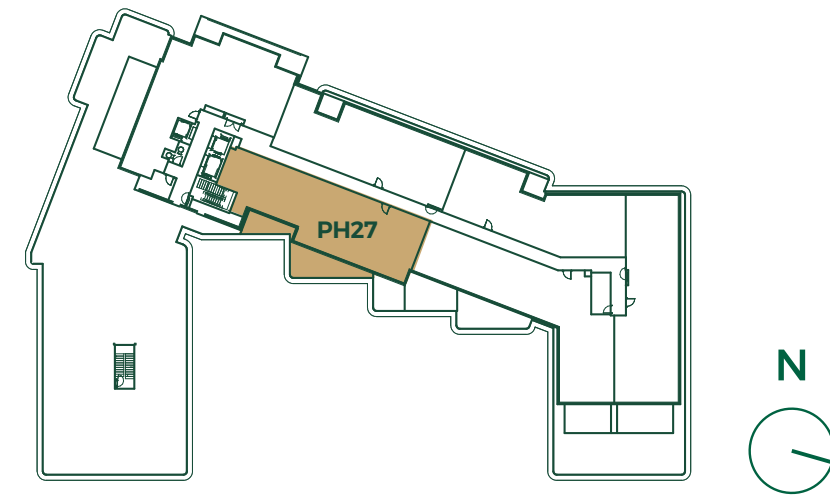
PENTHOUSE



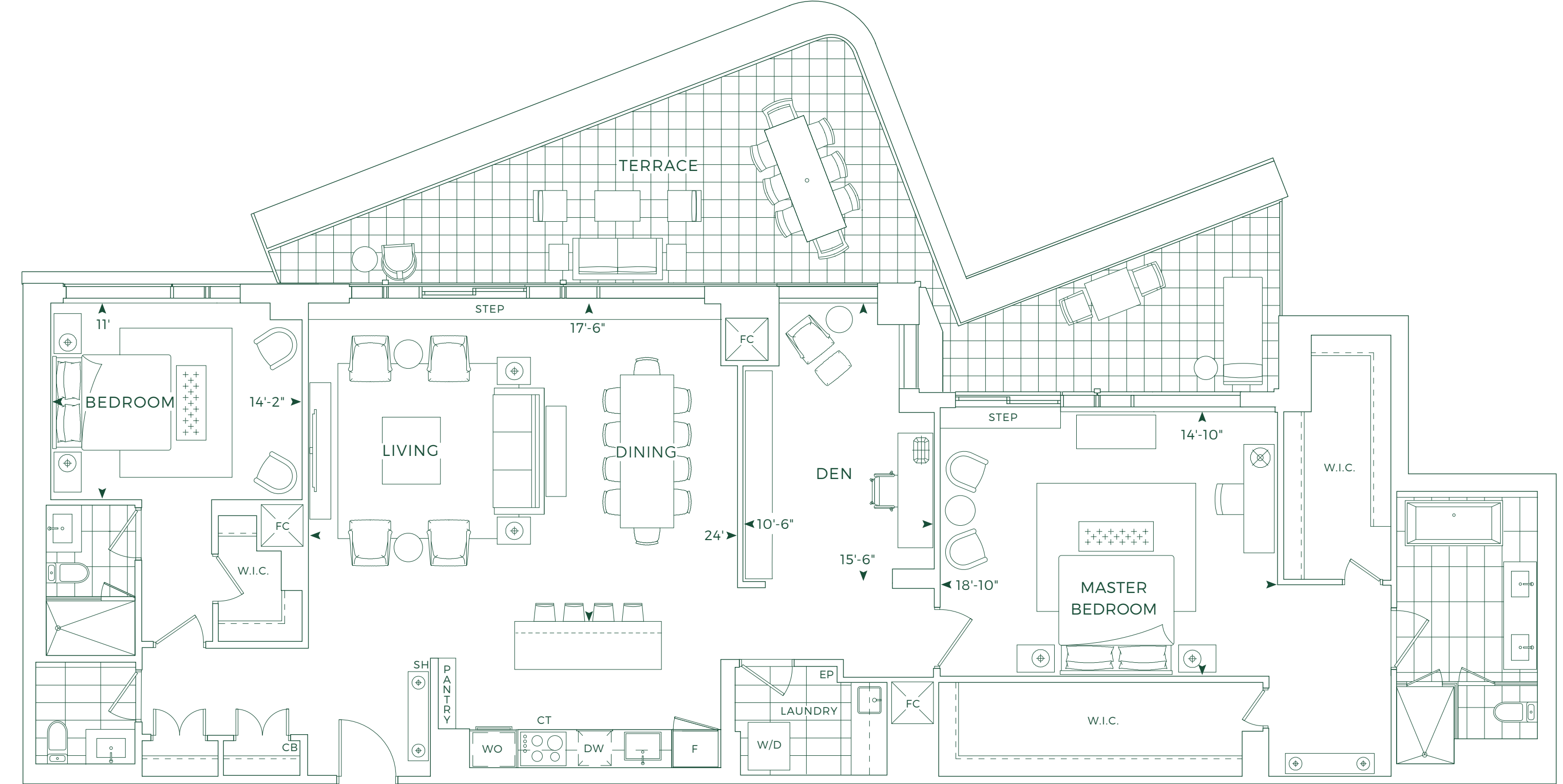
PENTHOUSE 27

2,173 SQ.FT.

2 BEDROOMS + DEN, 2.5 BATHROOMS



PENTHOUSE



© Tridel 2019. Tridel, "D" design, Tridel Built for Life, Tridel Built for Life Design, and Tridel Built Green Built for Life are registered Trademarks of Tridel Corporation. Project names and logos are Trademarks of their respective owners. All rights reserved. Building and view not to scale. All dimensions are approximate and subject to normal construction variances. Dimensions may exceed the usable floor area. Some features and finishes herein are upgrades or are for illustrative purposes only and may not be available. Furniture is displayed for illustrative purposes only and does not necessarily reflect the electrical plan for the suite. Suites are sold unfurnished. Balcony, terrace and ledge variations may apply; contact a sales representative for further details. Furniture, BBQs and planter locations on balcony/terraces are for illustration purposes only and subject to change. Illustrations are artist's concept only. Sizes and specifications subject to change without notice. E. & O. E. June 2019.

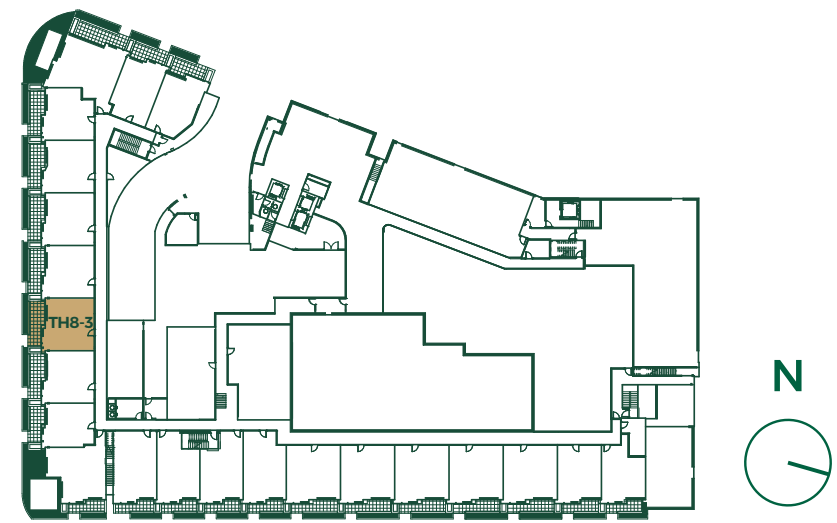
EDENBRIDGE™
KINGSWAY

Townhomes

TOWNHOME 8-3

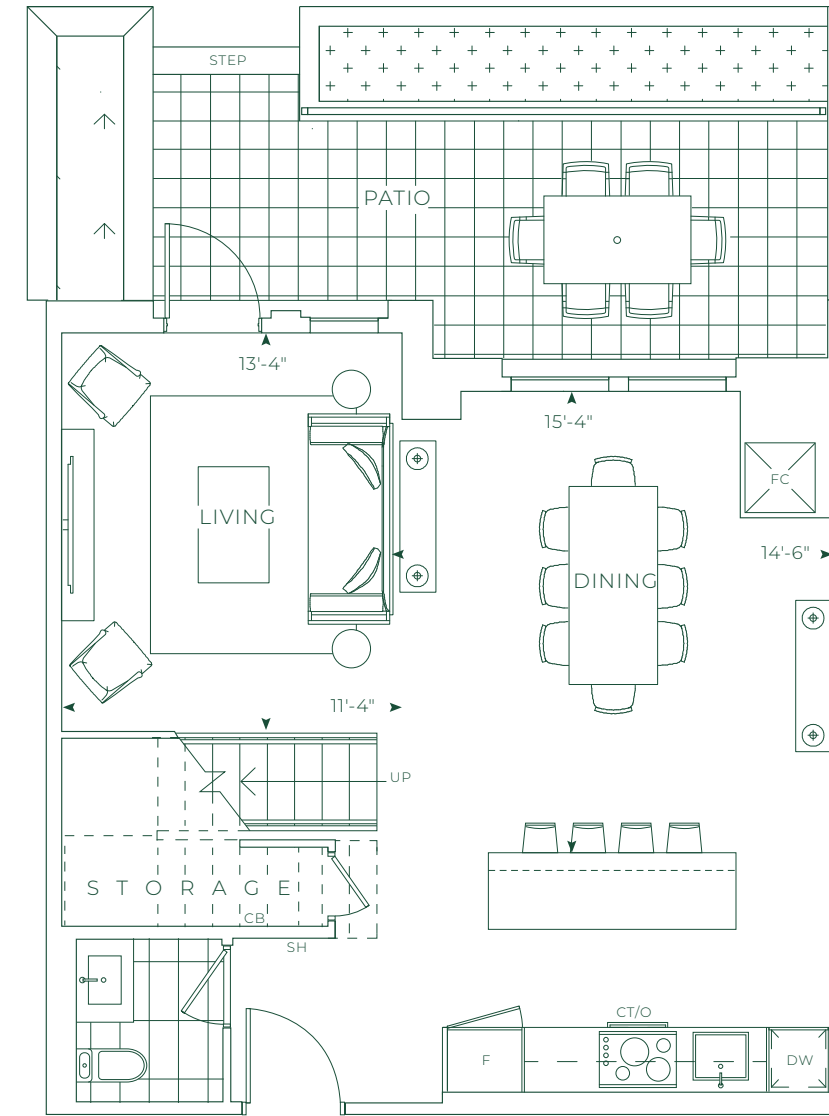
1,620 SQ.FT.

3 BEDROOMS, 2.5 BATHROOMS

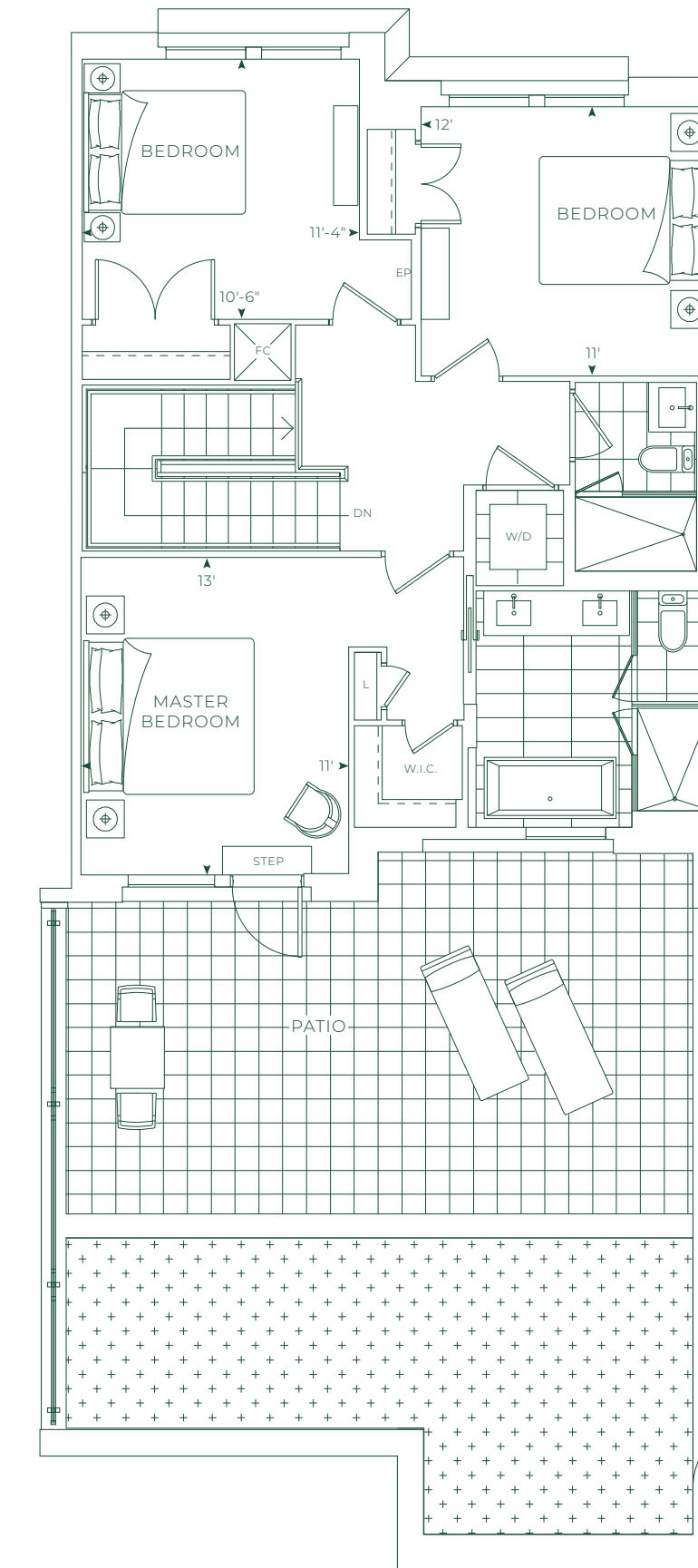


GROUND FLOOR

LOWER LEVEL



UPPER LEVEL

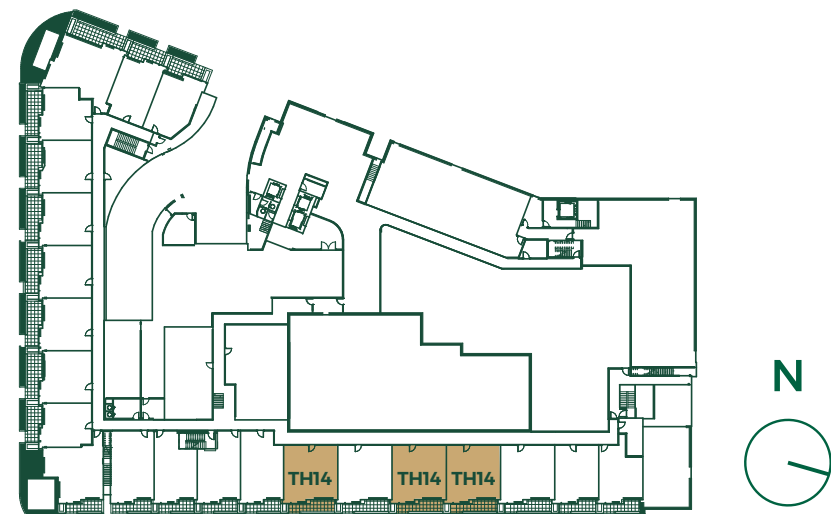


© Tridel 2019. Tridel, "TD" design, Tridel Built for Life, Tridel Built for Life Design, and Tridel Built Green Built for Life are registered trademarks of Tridel Corporation. Project names and logos are trademarks of their respective owners. All rights reserved. Building and view not to scale. All dimensions are approximate and subject to normal construction variances. Dimensions may exceed the usable floor area. Some features and finishes herein are upgrades or are for illustrative purposes only and may not be available. Furniture is displayed for illustrative purposes only and does not necessarily reflect the electrical plan for the suite. Suites are sold unfurnished. Balcony, terrace and facade variations may apply; contact a sales representative for further details. Furniture, BBQs and planter locations on balcony/terraces are for illustrative purposes only and subject to change. Illustrations are artist's concept only. Sizes and specifications subject to change without notice. E. & O. E. June 2019.

TOWNHOME 14

1,820 SQ.FT.

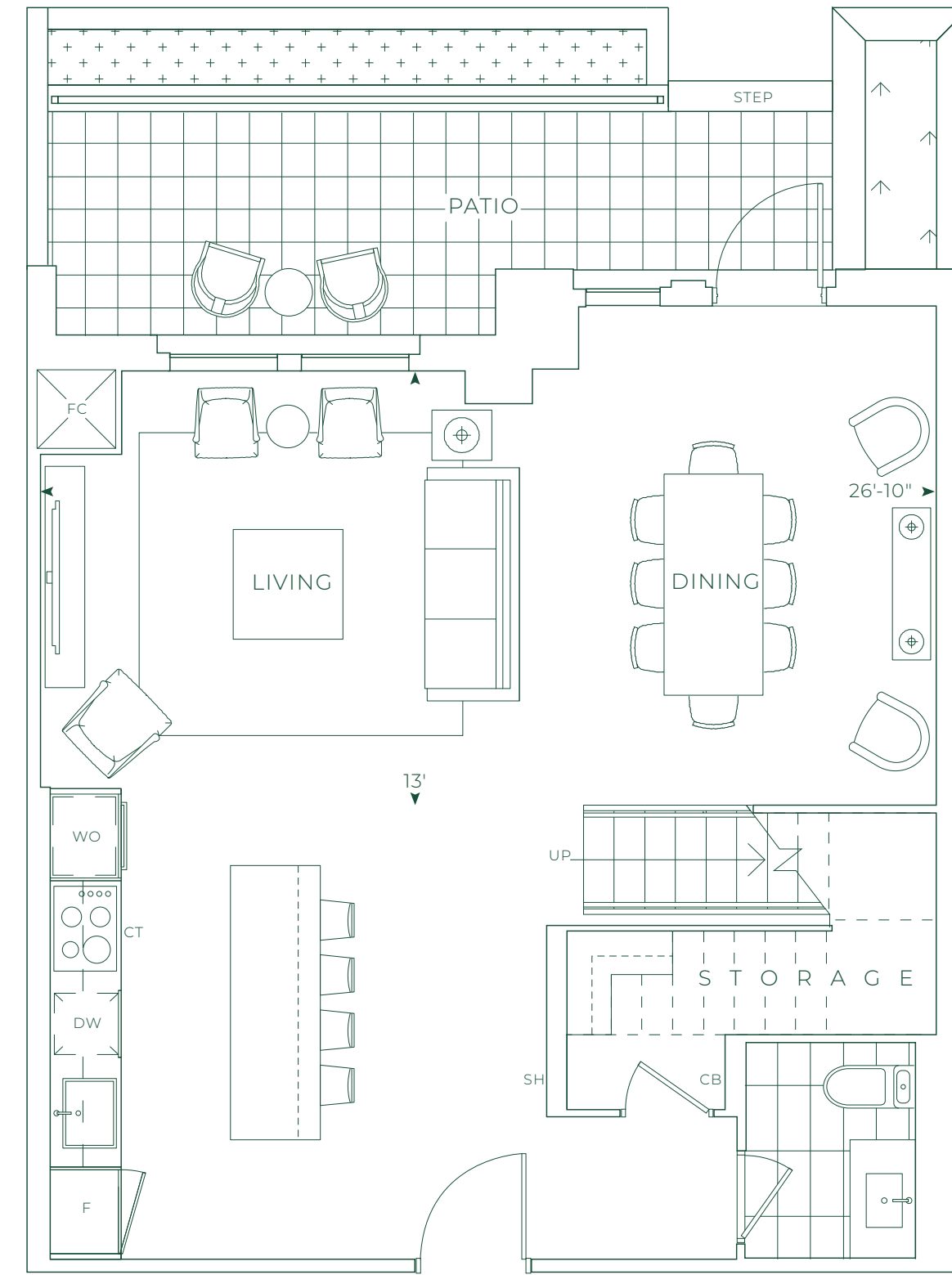
3 BEDROOMS, 2.5 BATHROOMS



GROUND FLOOR

© Tridel 2019. Tridel, "D" design, Tridel Built for Life, Tridel Built for Life Design, and Tridel Built Green Built for Life are registered Trademarks of Tridel Corporation. Project names and logos are Trademarks of their respective owners. All rights reserved. Building and view not to scale. All dimensions are approximate and subject to normal construction variances. Dimensions may exceed the usable floor area. Some fixtures and finishes herein are upgrades or are for illustrative purposes only and may not be available. Furniture is displayed for illustrative purposes only and does not necessarily reflect the electrical plan for the suite. Suites are sold unfurnished. Balcony, terrace and facade variations may apply; contact a sales representative for further details. Furniture, BBQs and planter locations on balcony/terraces are for illustrative purposes only and subject to change. Illustrations are artist's concept only. Sizes and specifications subject to change without notice. E. & O. E. June 2019.

LOWER LEVEL



UPPER LEVEL

