

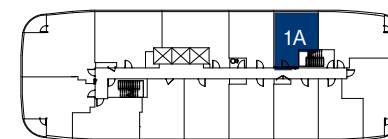
1A

502 SQ.FT.

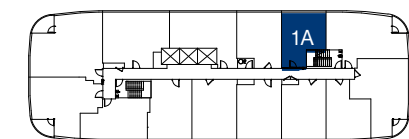
1 BEDROOM 1 BATHROOM

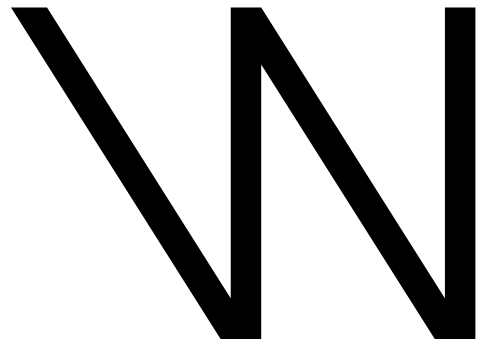
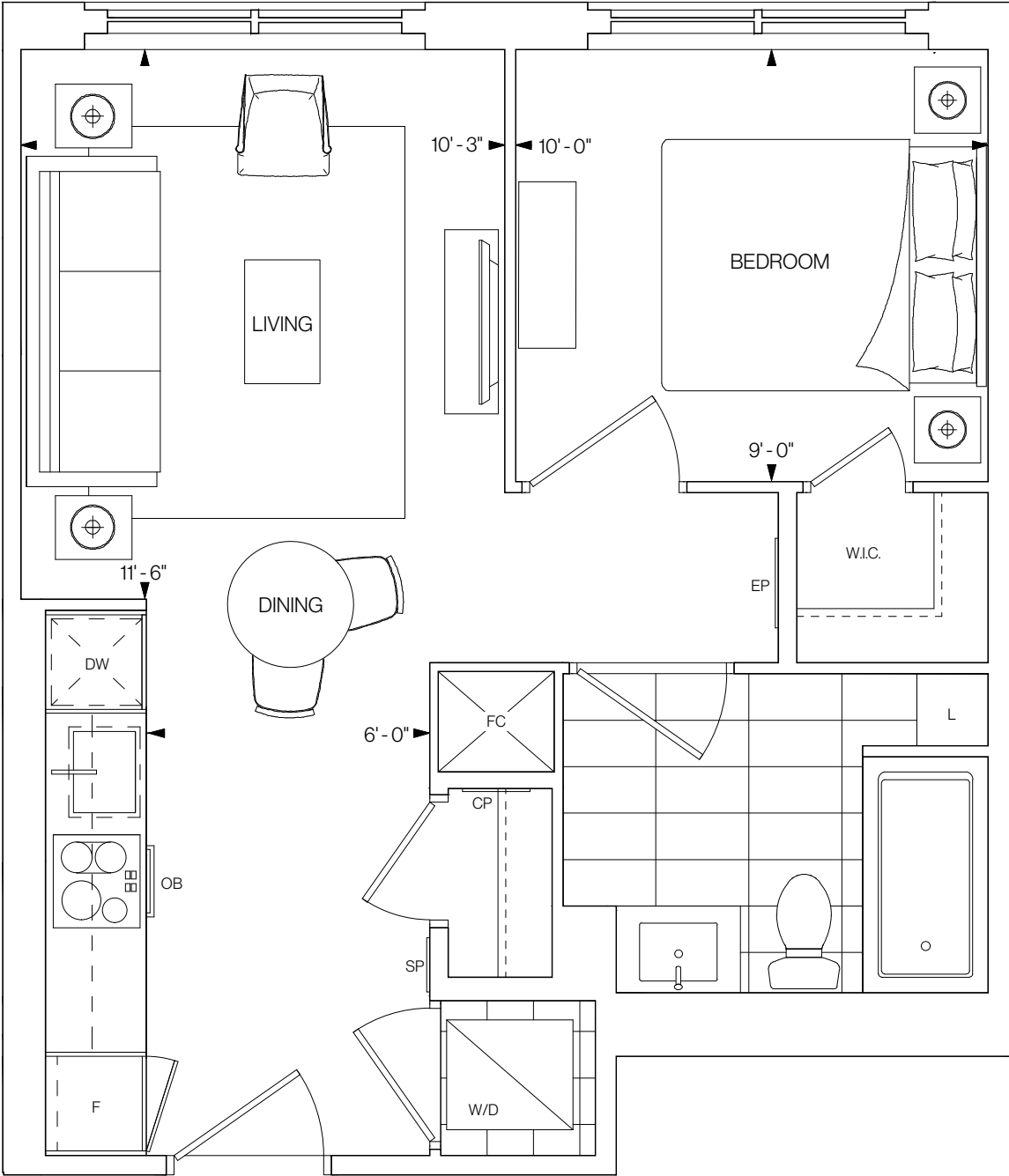
NORTHEAST FACING

FLOOR 6



FLOORS 7-12





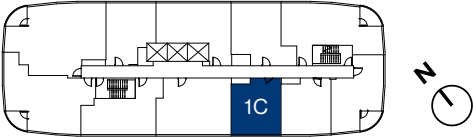
1C

509 SQ.FT.

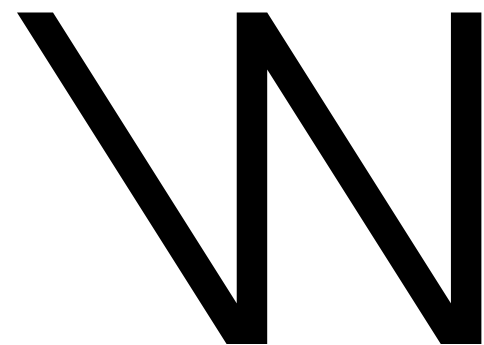
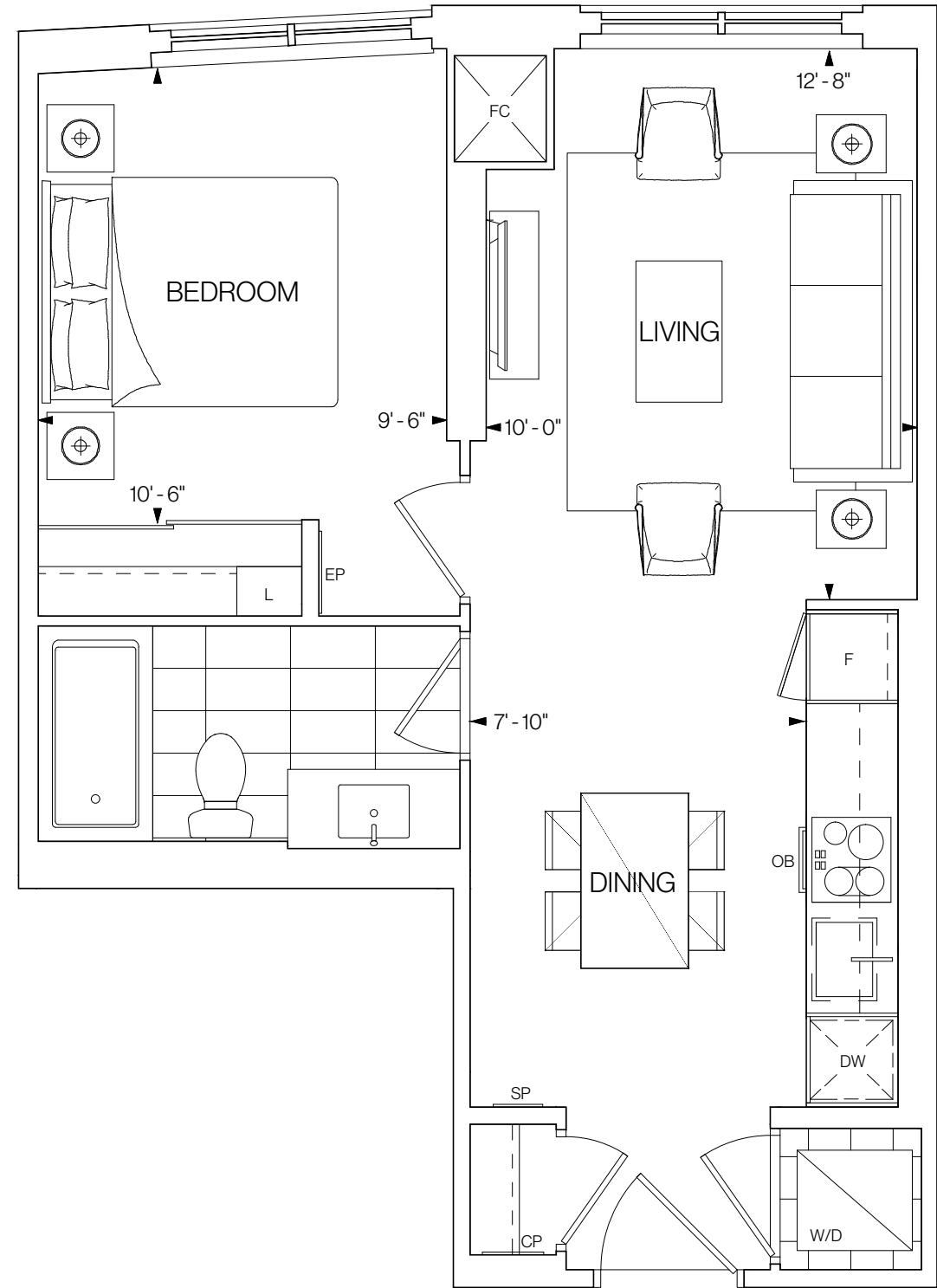
1 BEDROOM 1 BATHROOM

SOUTHWEST FACING

FLOORS 14-20



©Tridel 2020. *Tridel, "D" design, Tridel Built for Life and Tridel Built for Life Design are registered Trademarks of Tridel Corporation. Project names and logos are Trademarks of their respective owners. All rights reserved. Buildings and views not to scale. All dimensions are approximate and subject to normal construction variances. Dimensions may exceed the usable floor area. Sizes and specifications subject to change without notice. Actual usable floor space may vary from the stated floor area. Furniture is displayed for illustration purposes only and does not necessarily reflect the electrical plan for the suite. Suites are sold unfurnished. Balcony, terrace and façade variations may apply, contact a sales representative for further details. Illustrations are artist's concept only. Prices and specifications subject to change without notice. E.&O.E. October 2020.



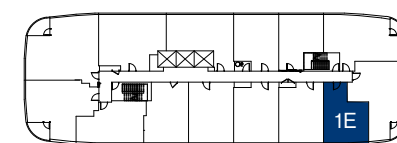
1E

536 SQ.FT.

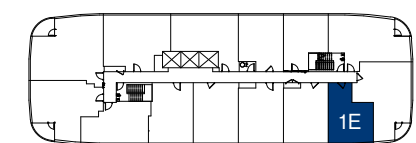
1 BEDROOM 1 BATHROOM

SOUTHWEST FACING

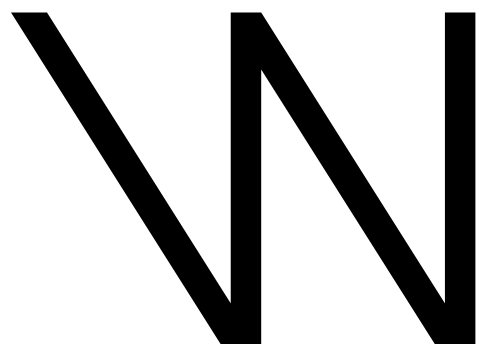
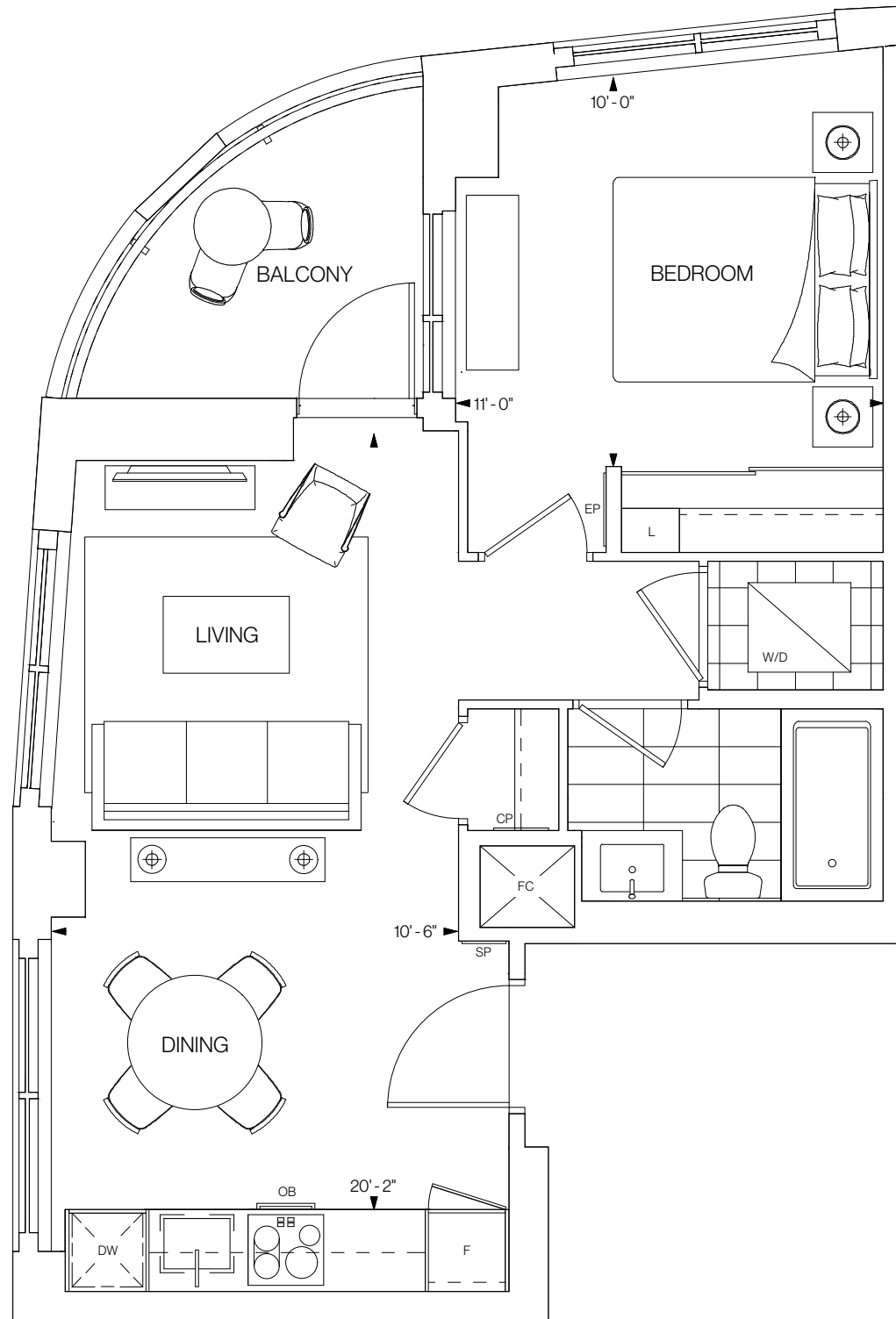
FLOOR 6



FLOORS 7-12



©Tridel 2020. *Tridel, "D" design, Tridel Built for Life and Tridel Built for Life Design are registered Trademarks of Tridel Corporation. Project names and logos are Trademarks of their respective owners. All rights reserved. Buildings and views not to scale. All dimensions are approximate and subject to normal construction variances. Dimensions may exceed the usable floor area. Sizes and specifications subject to change without notice. Actual usable floor space may vary from the stated floor area. Furniture is displayed for illustration purposes only and does not necessarily reflect the electrical plan for the suite. Suites are sold unfurnished. Balcony, terrace and façade variations may apply, contact a sales representative for further details. Illustrations are artist's concept only. Prices and specifications subject to change without notice. E.&O.E. October 2020.



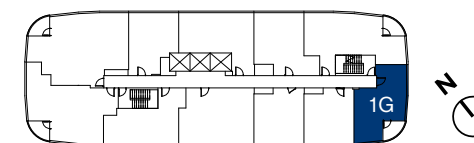
1G

576 SQ.FT.

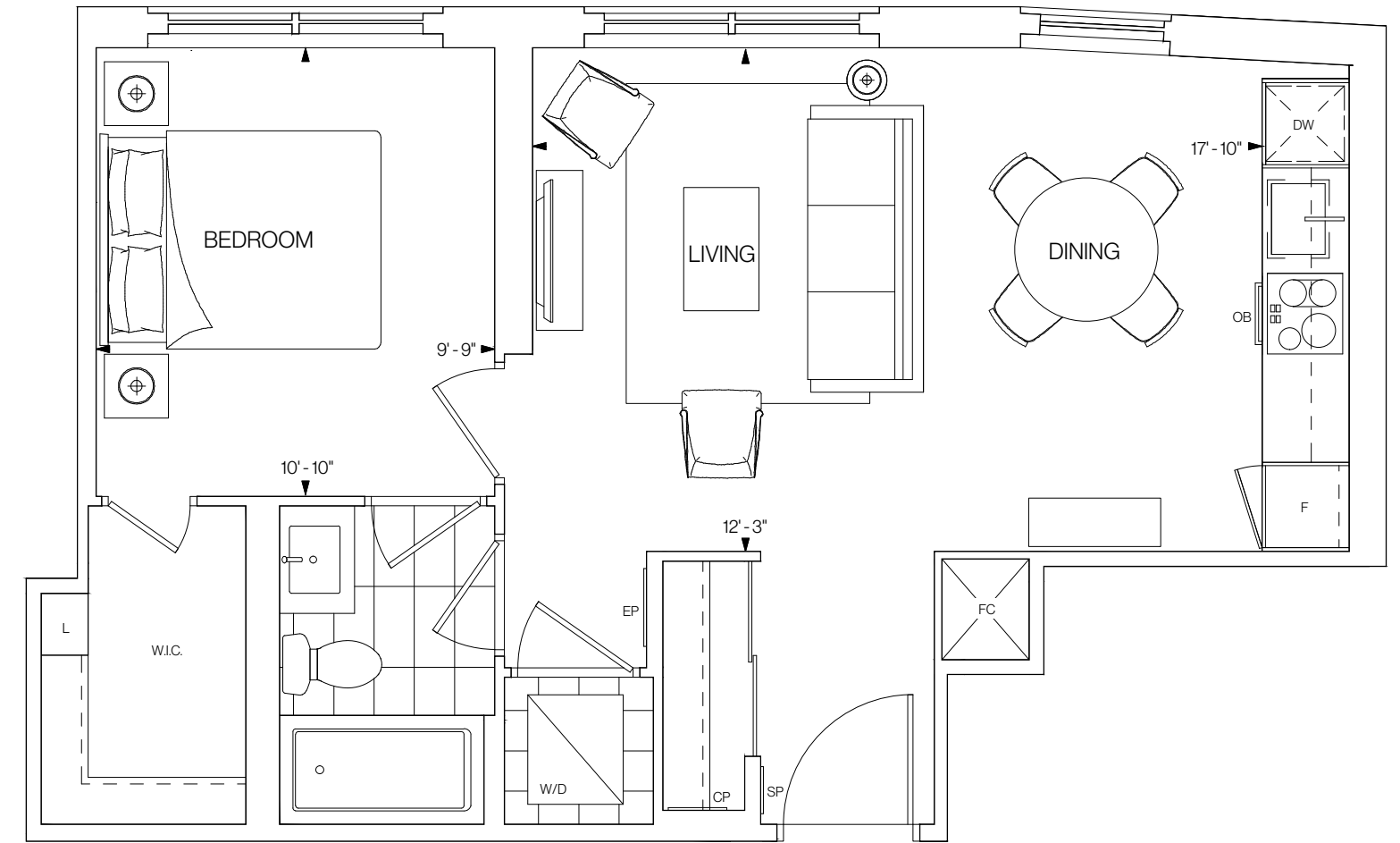
1 BEDROOM 1 BATHROOM

SOUTH FACING

FLOORS 14-20



©Tridel 2020. *Tridel, "D" design, Tridel Built for Life and Tridel Built for Life Design are registered Trademarks of Tridel Corporation. Project names and logos are Trademarks of their respective owners. All rights reserved. Buildings and views not to scale. All dimensions are approximate and subject to normal construction variances. Dimensions may exceed the usable floor area. Sizes and specifications subject to change without notice. Actual usable floor space may vary from the stated floor area. Furniture is displayed for illustration purposes only and does not necessarily reflect the electrical plan for the suite. Suites are sold unfurnished. Balcony, terrace and façade variations may apply, contact a sales representative for further details. Illustrations are artist's concept only. Prices and specifications subject to change without notice. E.&O.E. October 2020.



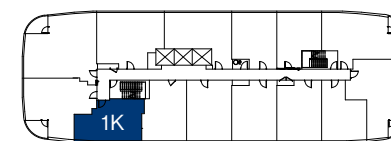
1K

603 SQ.FT.

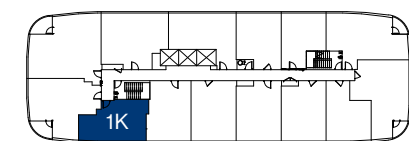
1 BEDROOM 1 BATHROOM

SOUTHWEST FACING

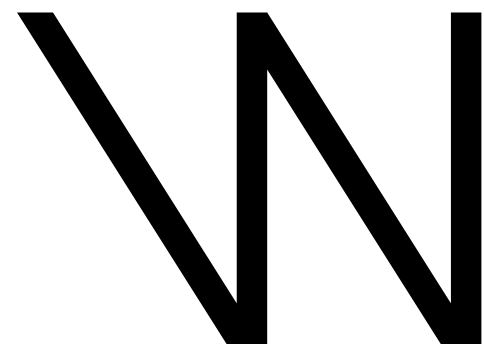
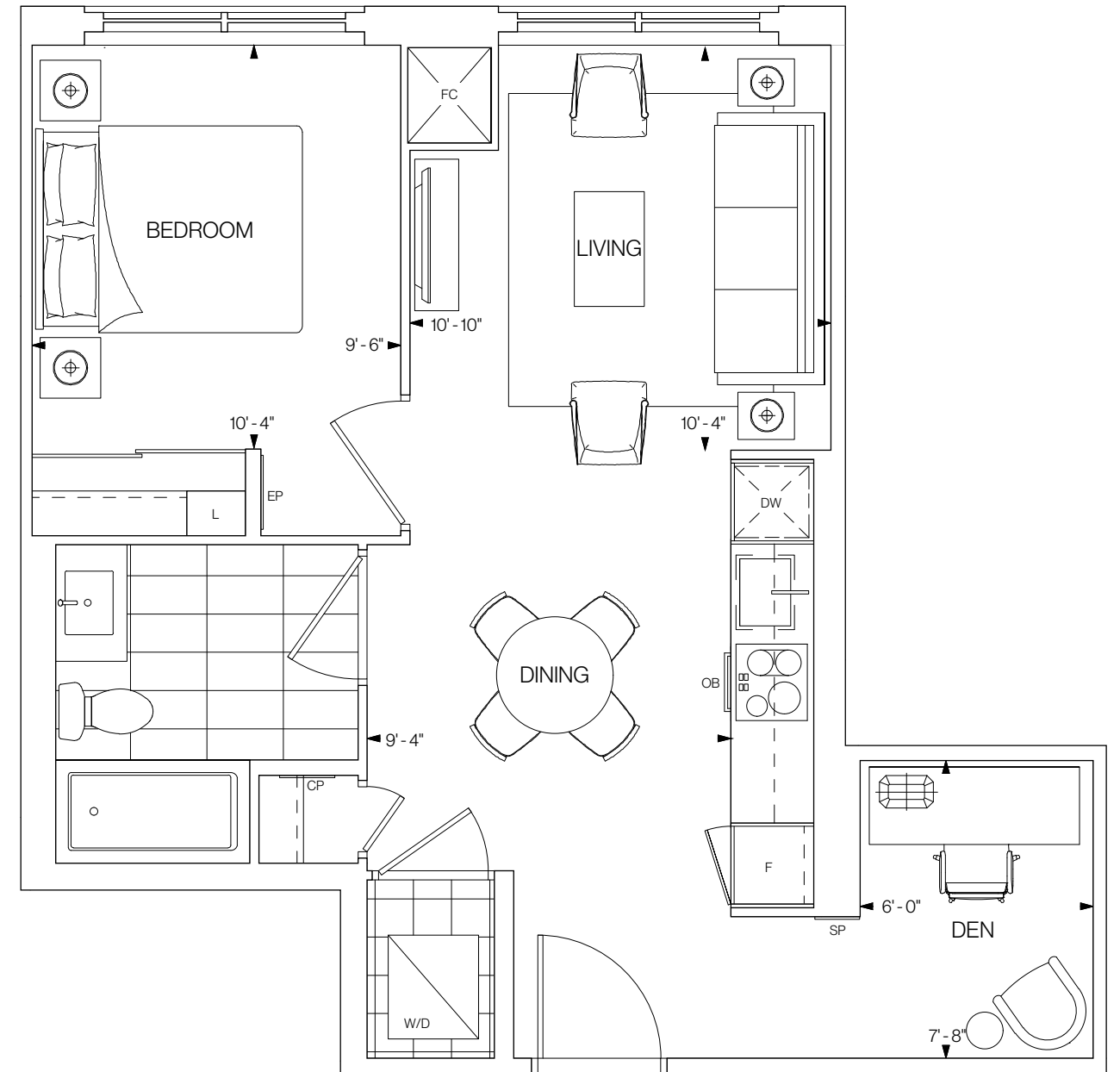
FLOOR 6



FLOORS 7-12



©Tridel 2020. *Tridel, "D" design, Tridel Built for Life and Tridel Built for Life Design are registered Trademarks of Tridel Corporation. Project names and logos are Trademarks of their respective owners. All rights reserved. Buildings and views not to scale. All dimensions are approximate and subject to normal construction variances. Dimensions may exceed the usable floor area. Sizes and specifications subject to change without notice. Actual usable floor space may vary from the stated floor area. Furniture is displayed for illustration purposes only and does not necessarily reflect the electrical plan for the suite. Suites are sold unfurnished. Balcony, terrace and façade variations may apply, contact a sales representative for further details. Illustrations are artist's concept only. Prices and specifications subject to change without notice. E.&O.E. October 2020.



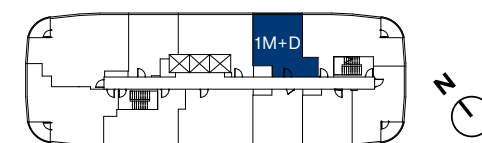
1M+D

604 SQ.FT.

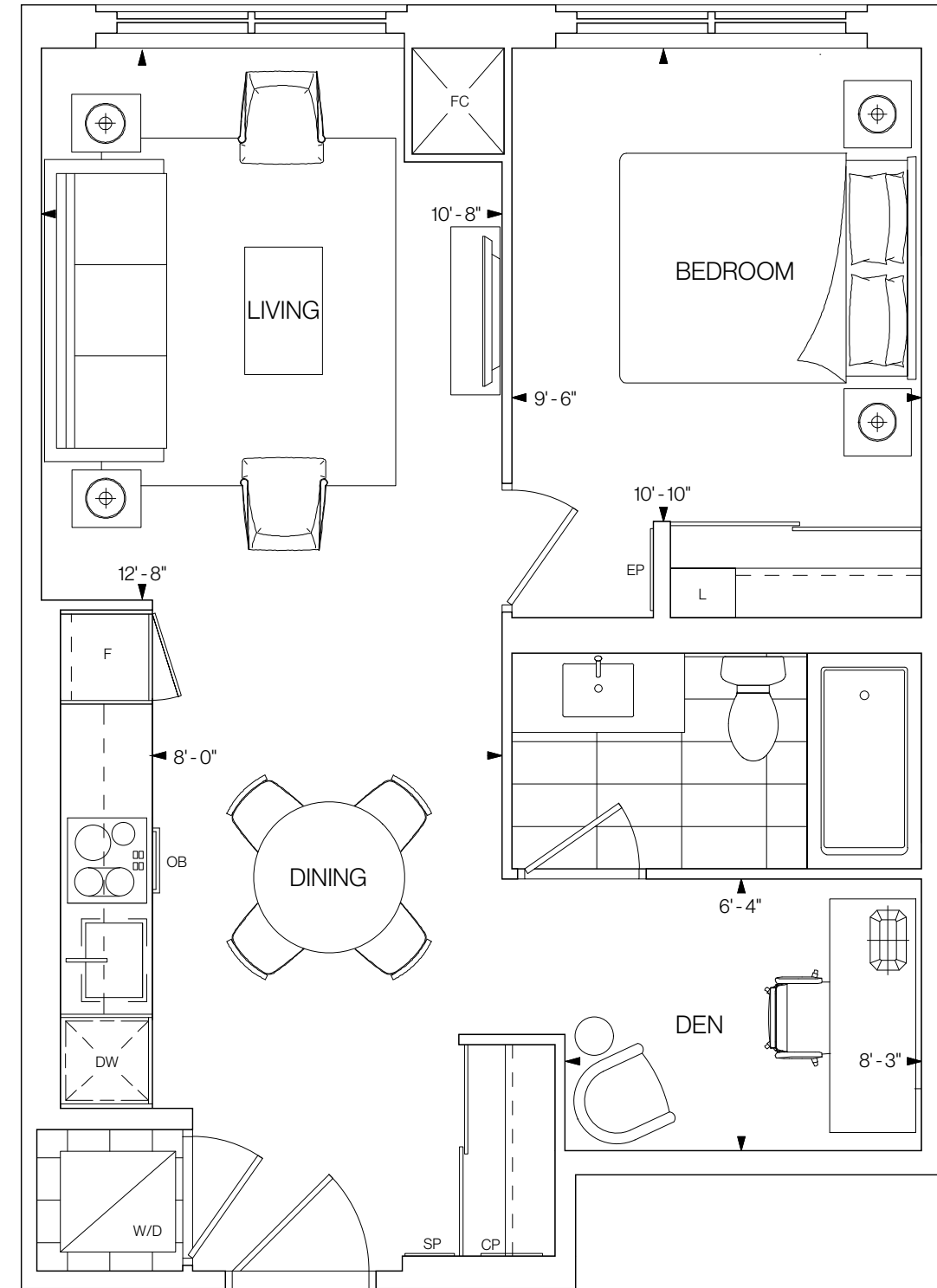
1 BEDROOM+DEN 1 BATHROOM

NORTHEAST FACING

FLOORS 14-20



©Tridel 2020. *Tridel, "D" design, Tridel Built for Life and Tridel Built for Life Design are registered Trademarks of Tridel Corporation. Project names and logos are Trademarks of their respective owners. All rights reserved. Buildings and views not to scale. All dimensions are approximate and subject to normal construction variances. Dimensions may exceed the usable floor area. Sizes and specifications subject to change without notice. Actual usable floor space may vary from the stated floor area. Furniture is displayed for illustration purposes only and does not necessarily reflect the electrical plan for the suite. Suites are sold unfurnished. Balcony, terrace and façade variations may apply, contact a sales representative for further details. Illustrations are artist's concept only. Prices and specifications subject to change without notice. E.&O.E. October 2020.



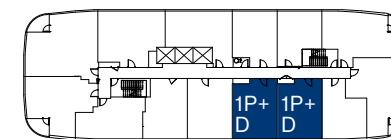
1P+D

614 SQ.FT.

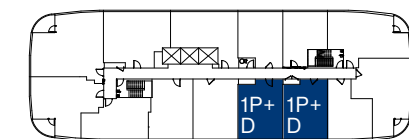
1 BEDROOM+DEN 1 BATHROOM

SOUTHWEST FACING

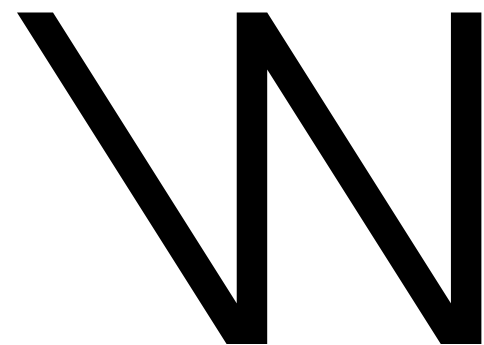
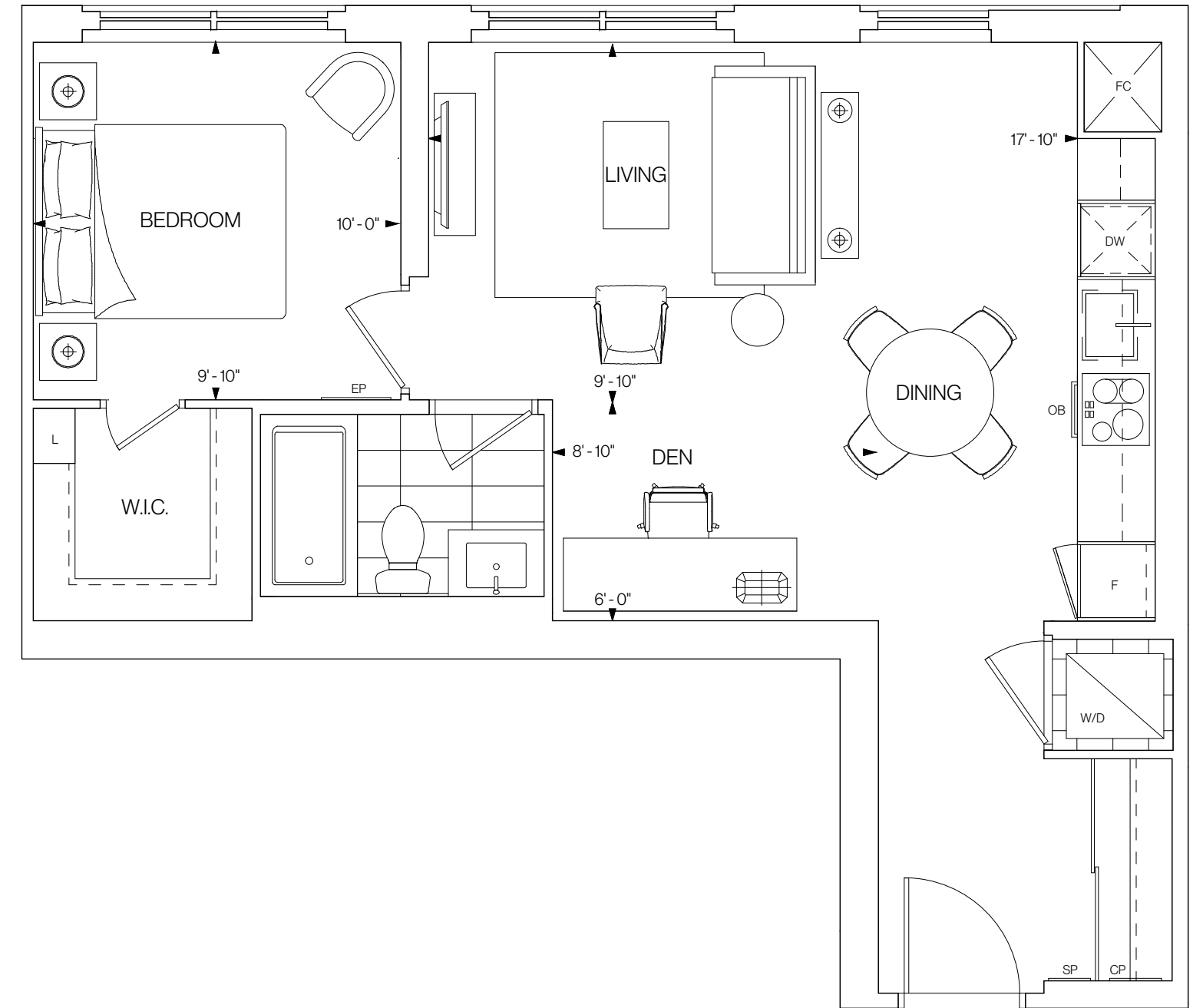
FLOOR 6



FLOORS 7-12



©Tridel 2020. *Tridel, "D" design, Tridel Built for Life and Tridel Built for Life Design are registered Trademarks of Tridel Corporation. Project names and logos are Trademarks of their respective owners. All rights reserved. Buildings and views not to scale. All dimensions are approximate and subject to normal construction variances. Dimensions may exceed the usable floor area. Sizes and specifications subject to change without notice. Actual usable floor space may vary from the stated floor area. Furniture is displayed for illustration purposes only and does not necessarily reflect the electrical plan for the suite. Suites are sold unfurnished. Balcony, terrace and façade variations may apply, contact a sales representative for further details. Illustrations are artist's concept only. Prices and specifications subject to change without notice. E.&O.E. October 2020.



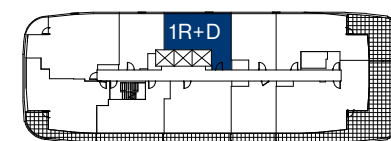
1R+D

665 SQ.FT.

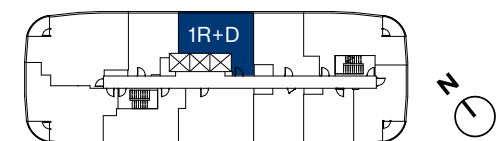
1 BEDROOM+DEN 1 BATHROOM

NORTHEAST FACING

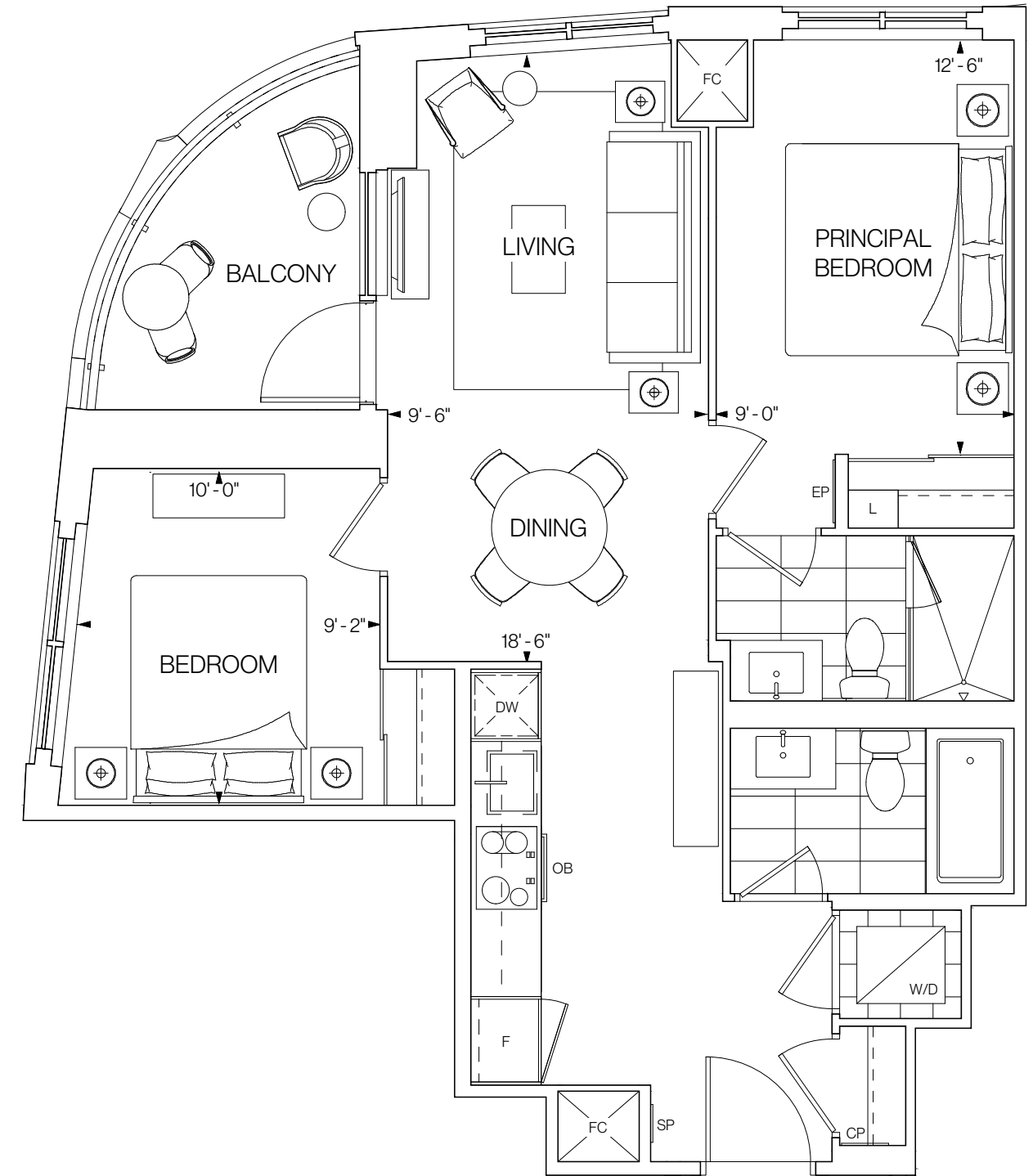
FLOOR 13



FLOORS 14-20



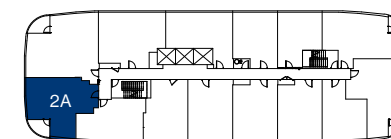
©Tridel 2020. *Tridel, "D" design, Tridel Built for Life and Tridel Built for Life Design are registered Trademarks of Tridel Corporation. Project names and logos are Trademarks of their respective owners. All rights reserved. Buildings and views not to scale. All dimensions are approximate and subject to normal construction variances. Dimensions may exceed the usable floor area. Sizes and specifications subject to change without notice. Actual usable floor space may vary from the stated floor area. Furniture is displayed for illustration purposes only and does not necessarily reflect the electrical plan for the suite. Suites are sold unfurnished. Balcony, terrace and façade variations may apply, contact a sales representative for further details. Illustrations are artist's concept only. Prices and specifications subject to change without notice. E.&O.E. October 2020.



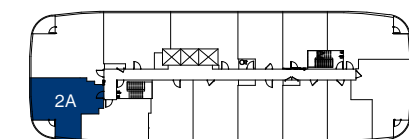
W 2A

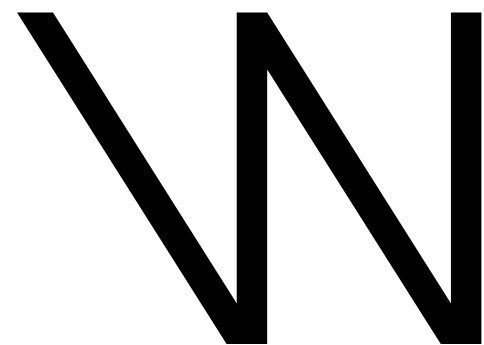
769 SQ.FT.
2 BEDROOMS 2 BATHROOMS
WEST FACING

FLOOR 6



FLOORS 7-12



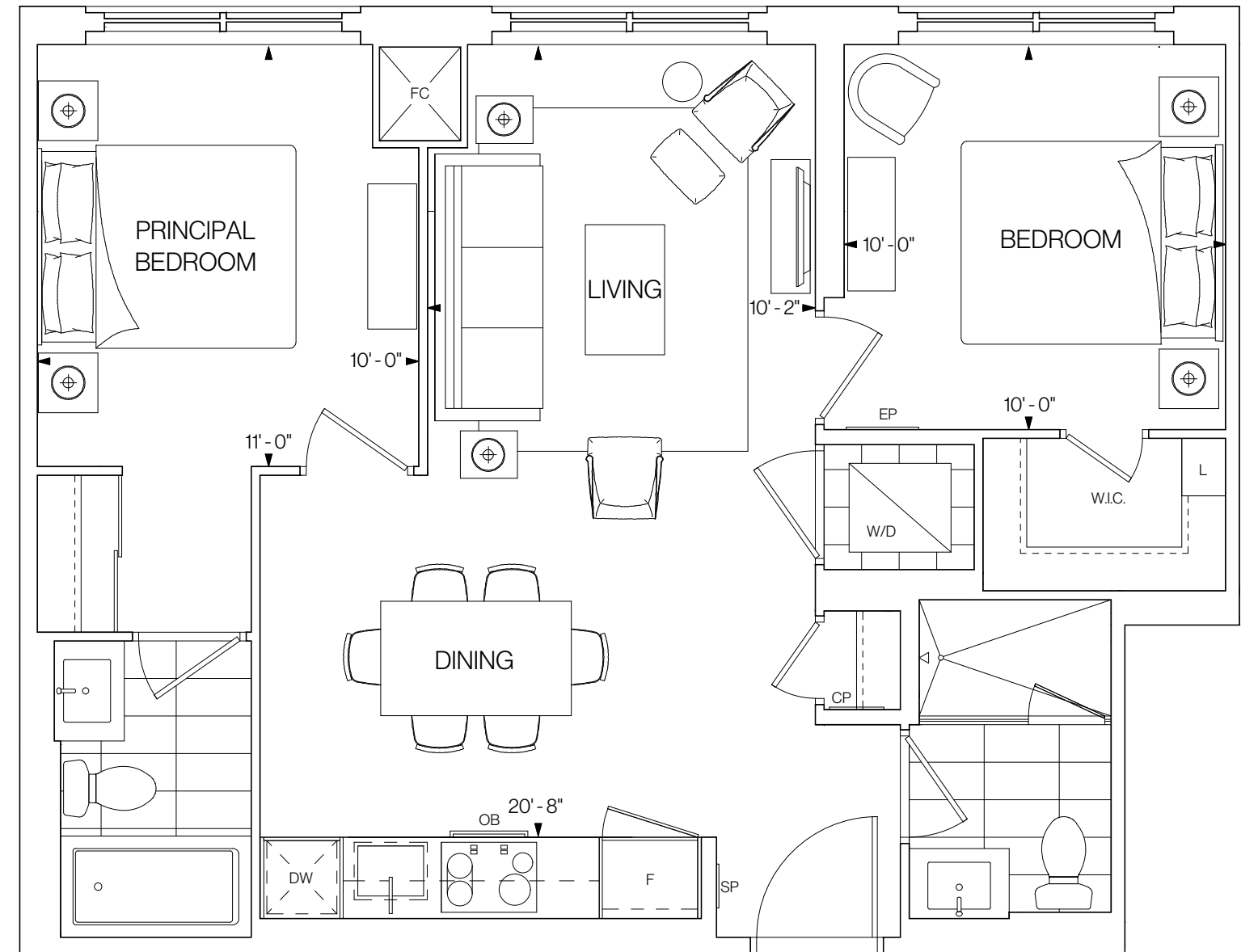


2B

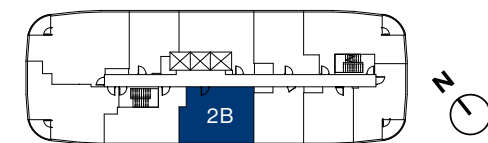
769 SQ.FT.

2 BEDROOMS 2 BATHROOMS

SOUTHWEST FACING



FLOORS 14-20



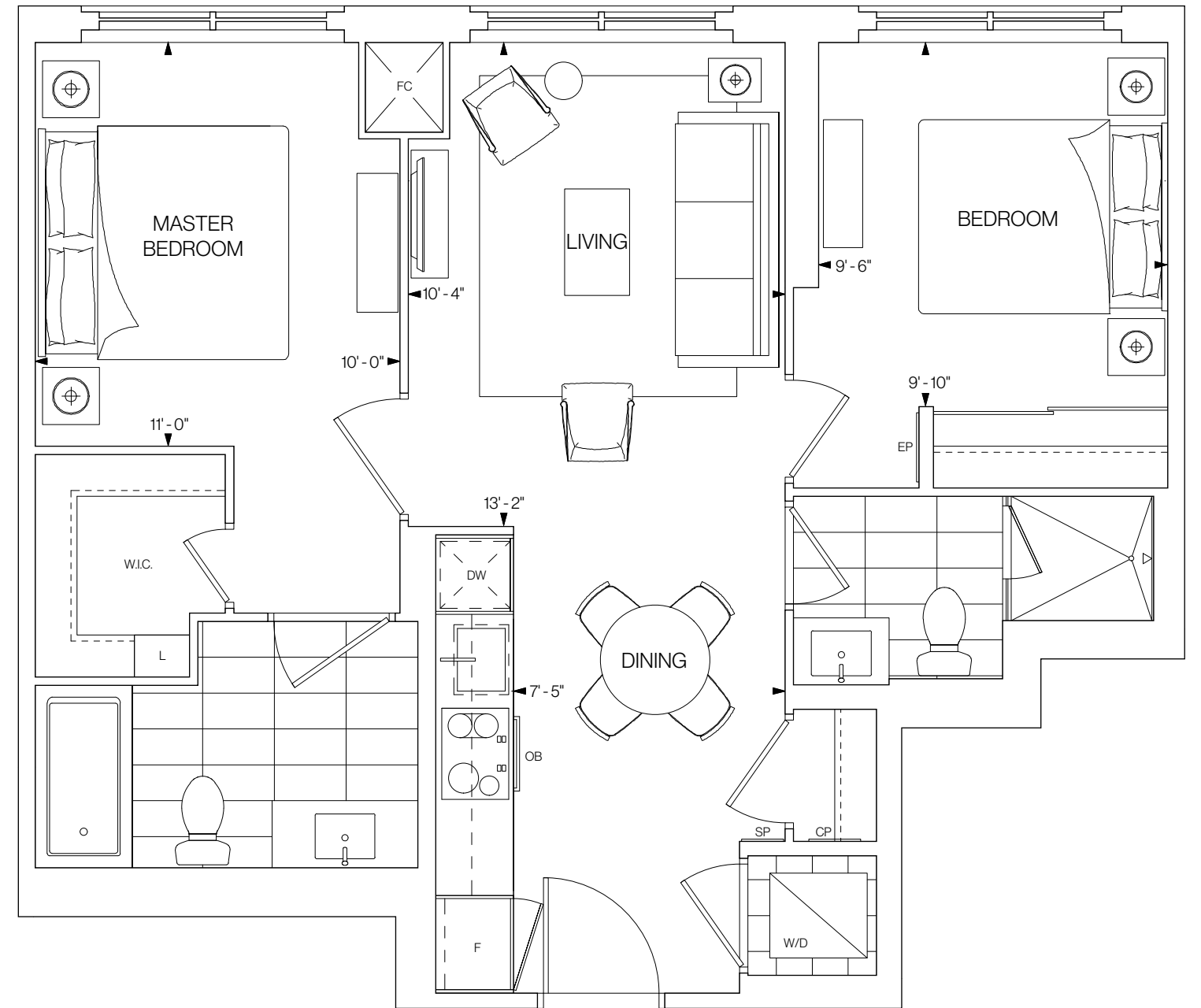
©Tridel 2020. *Tridel, "D" design, Tridel Built for Life and Tridel Built for Life Design are registered Trademarks of Tridel Corporation. Project names and logos are Trademarks of their respective owners. All rights reserved. Buildings and views not to scale. All dimensions are approximate and subject to normal construction variances. Dimensions may exceed the usable floor area. Sizes and specifications subject to change without notice. Actual usable floor space may vary from the stated floor area. Furniture is displayed for illustration purposes only and does not necessarily reflect the electrical plan for the suite. Suites are sold unfurnished. Balcony, terrace and façade variations may apply, contact a sales representative for further details. Illustrations are artist's concept only. Prices and specifications subject to change without notice. E.&O.E. October 2020.

W 2C

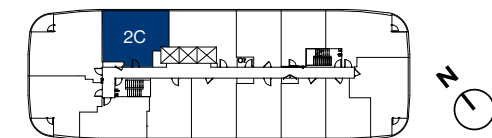
786 SQ.FT.

2 BEDROOMS 2 BATHROOMS

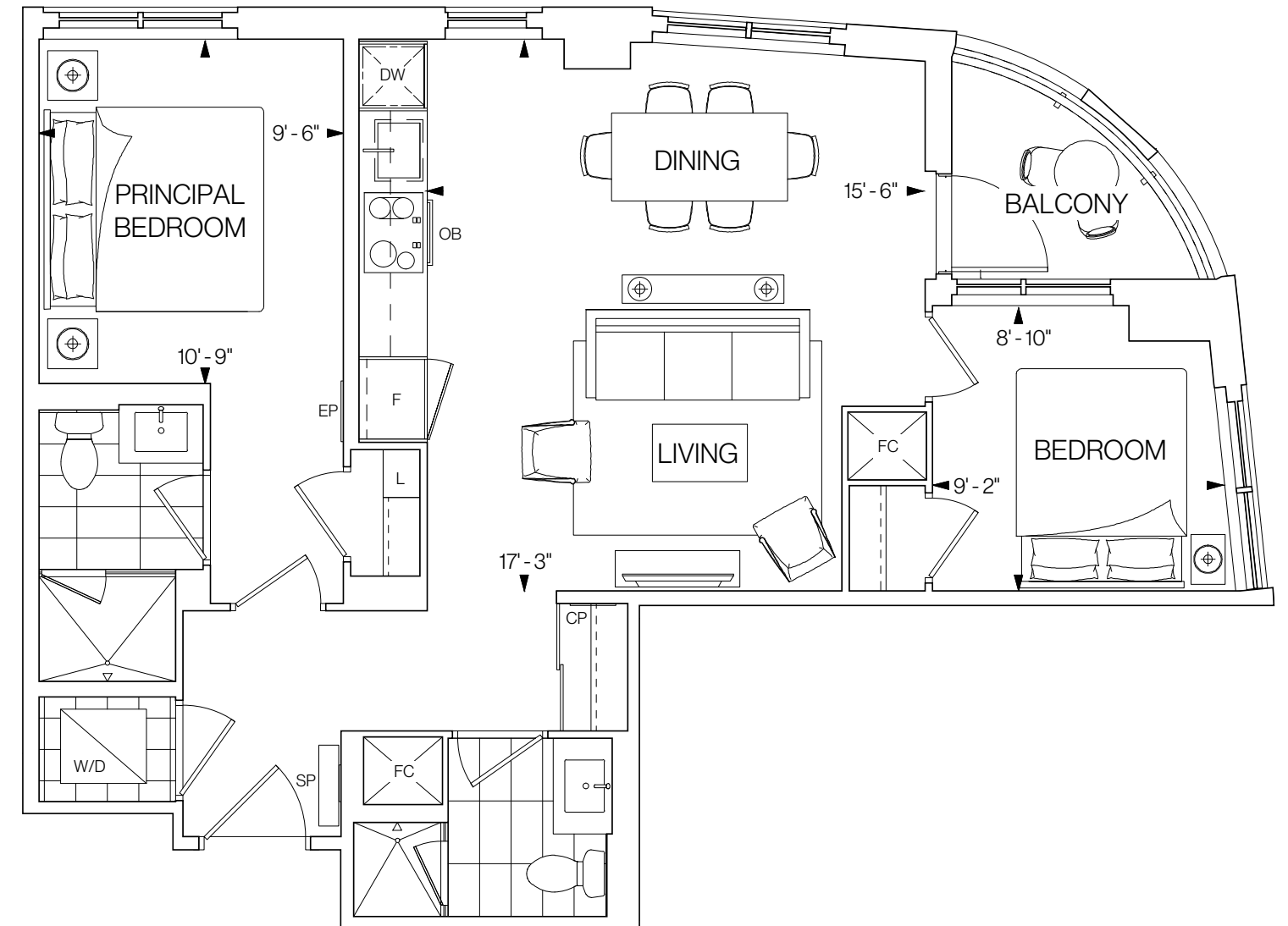
NORTHEAST FACING



FLOORS 7-12



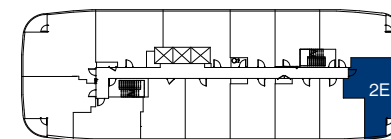
©Tridel 2020. *Tridel, "D" design, Tridel Built for Life and Tridel Built for Life Design are registered Trademarks of Tridel Corporation. Project names and logos are Trademarks of their respective owners. All rights reserved. Buildings and views not to scale. All dimensions are approximate and subject to normal construction variances. Dimensions may exceed the usable floor area. Sizes and specifications subject to change without notice. Actual usable floor space may vary from the stated floor area. Furniture is displayed for illustration purposes only and does not necessarily reflect the electrical plan for the suite. Suites are sold unfurnished. Balcony, terrace and façade variations may apply, contact a sales representative for further details. Illustrations are artist's concept only. Prices and specifications subject to change without notice. E.&O.E. October 2020.



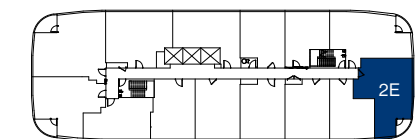
W 2E

800 SQ.FT.
2 BEDROOMS 2 BATHROOMS
SOUTH FACING

FLOOR 6

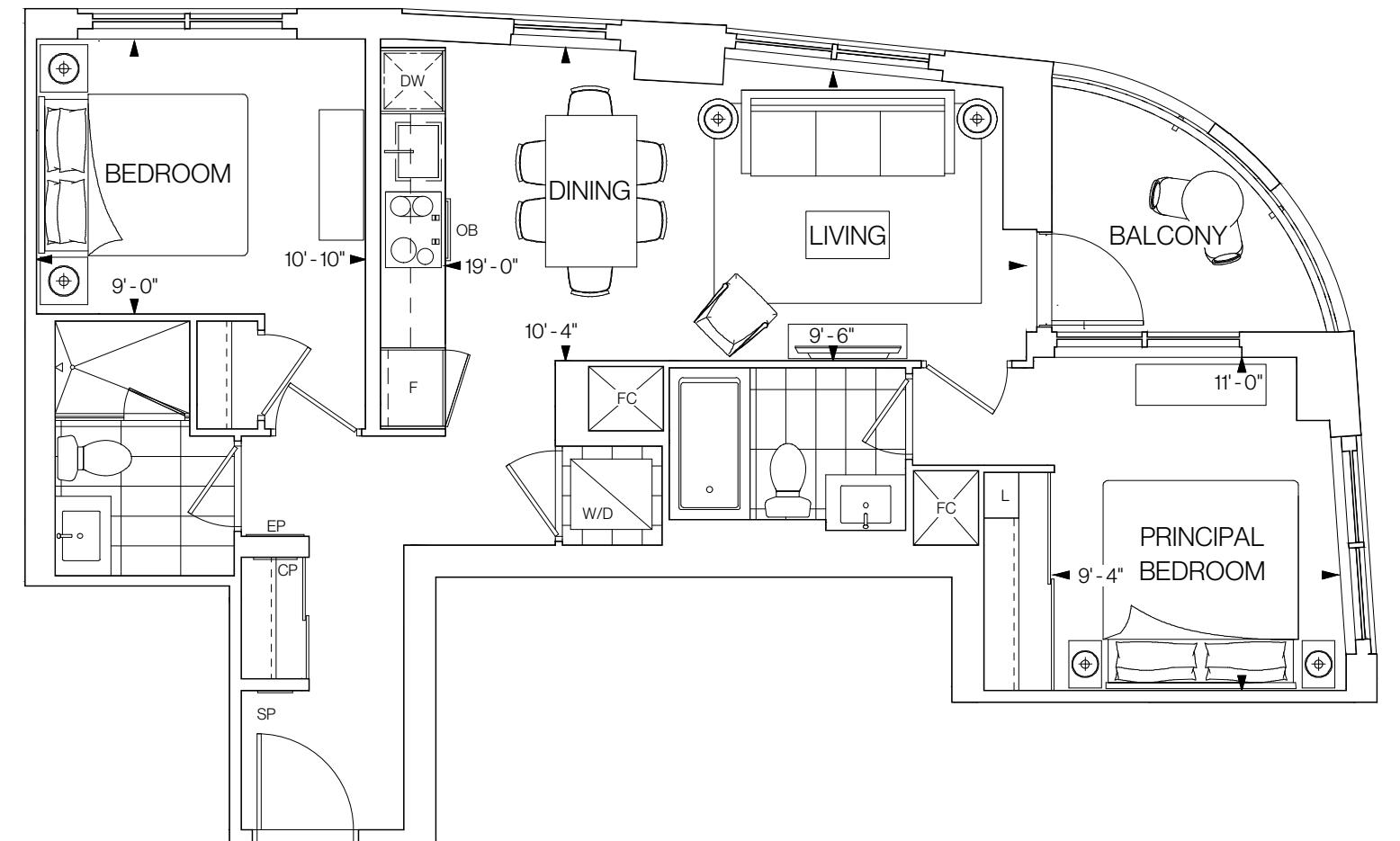


FLOORS 7-12

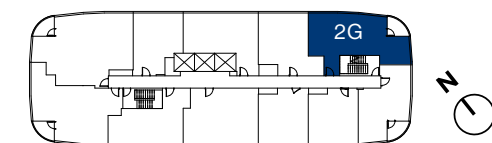


W 2G

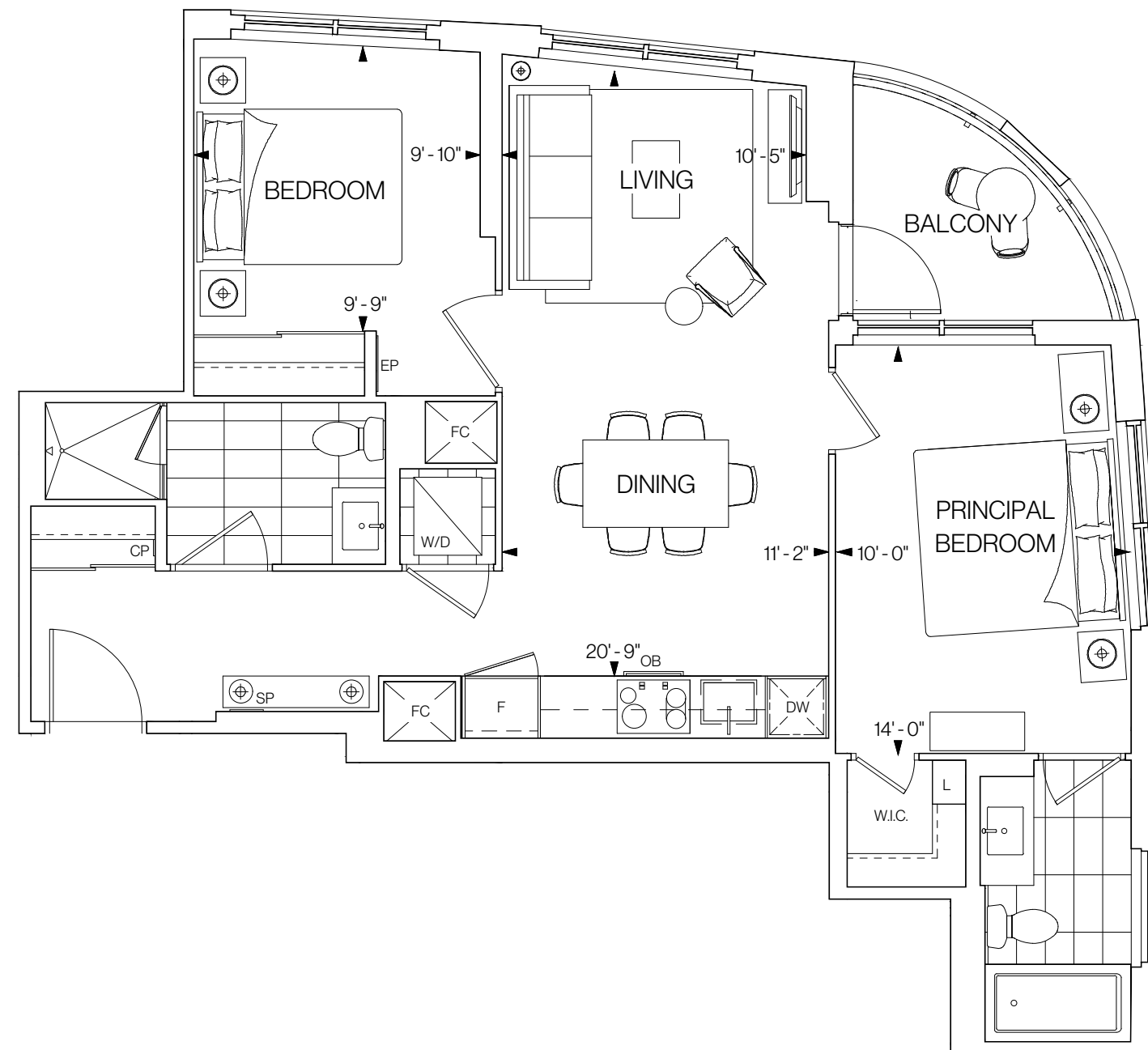
818 SQ.FT.
2 BEDROOMS 2 BATHROOMS
EAST FACING



FLOORS 14-20



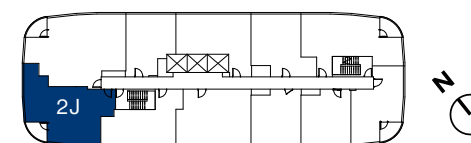
©Tridel 2020. *Tridel, "D" design, Tridel Built for Life and Tridel Built for Life Design are registered Trademarks of Tridel Corporation. Project names and logos are Trademarks of their respective owners. All rights reserved. Buildings and views not to scale. All dimensions are approximate and subject to normal construction variances. Dimensions may exceed the usable floor area. Sizes and specifications subject to change without notice. Actual usable floor space may vary from the stated floor area. Furniture is displayed for illustration purposes only and does not necessarily reflect the electrical plan for the suite. Suites are sold unfurnished. Balcony, terrace and façade variations may apply, contact a sales representative for further details. Illustrations are artist's concept only. Prices and specifications subject to change without notice. E.&O.E. October 2020.



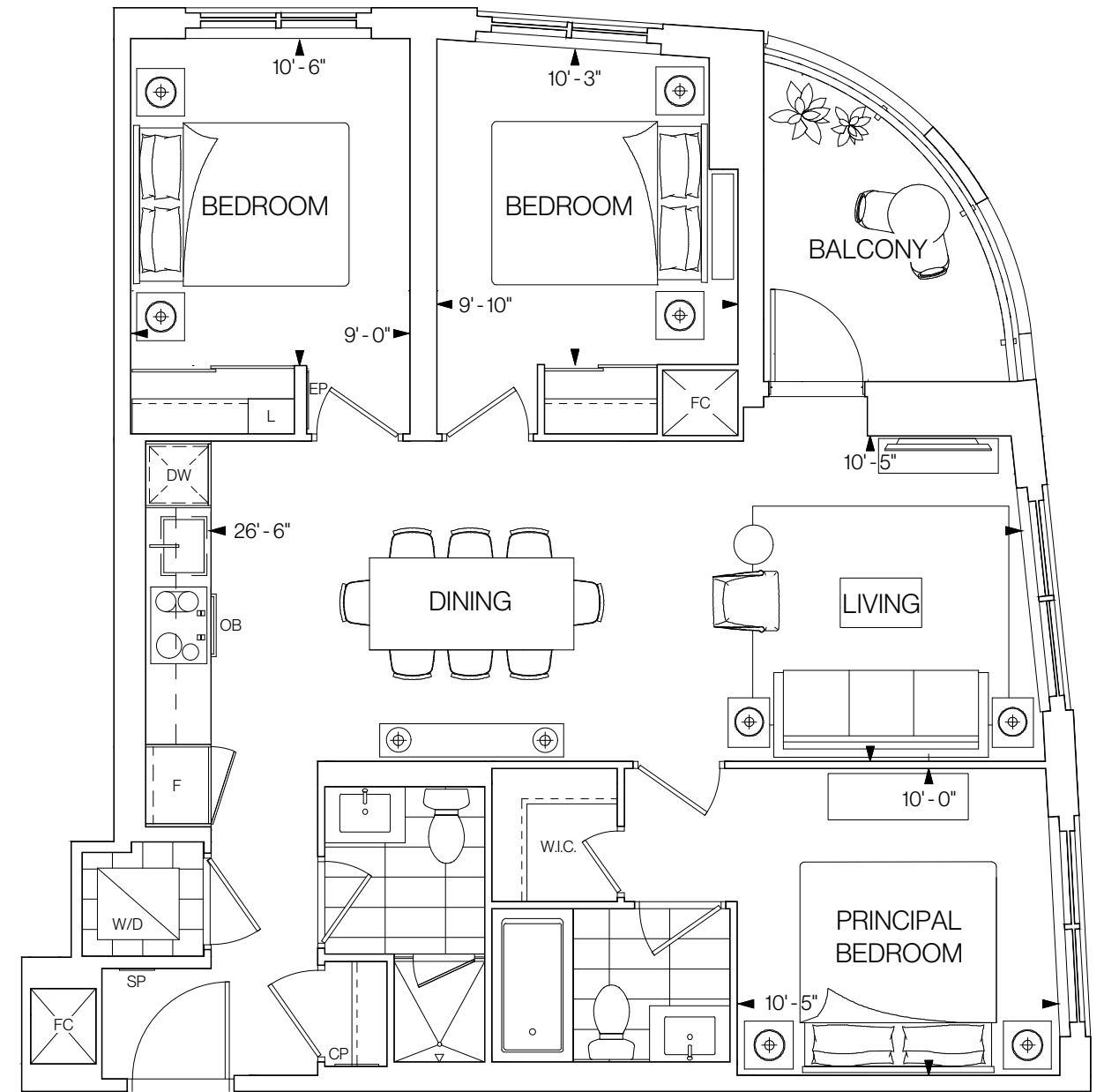
W 2J

889 SQ.FT.
2 BEDROOMS 2 BATHROOMS
WEST FACING

FLOORS 14-20



©Tridel 2020. *Tridel, "D" design, Tridel Built for Life and Tridel Built for Life Design are registered Trademarks of Tridel Corporation. Project names and logos are Trademarks of their respective owners. All rights reserved. Buildings and views not to scale. All dimensions are approximate and subject to normal construction variances. Dimensions may exceed the usable floor area. Sizes and specifications subject to change without notice. Actual usable floor space may vary from the stated floor area. Furniture is displayed for illustration purposes only and does not necessarily reflect the electrical plan for the suite. Suites are sold unfurnished. Balcony, terrace and façade variations may apply, contact a sales representative for further details. Illustrations are artist's concept only. Prices and specifications subject to change without notice. E.&O.E. October 2020.



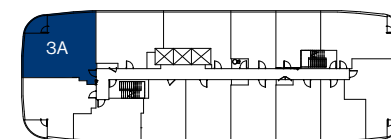
N 3A

987 SQ.FT.

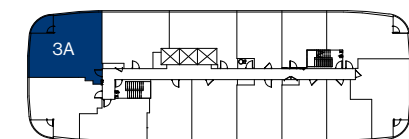
3 BEDROOMS 2 BATHROOMS

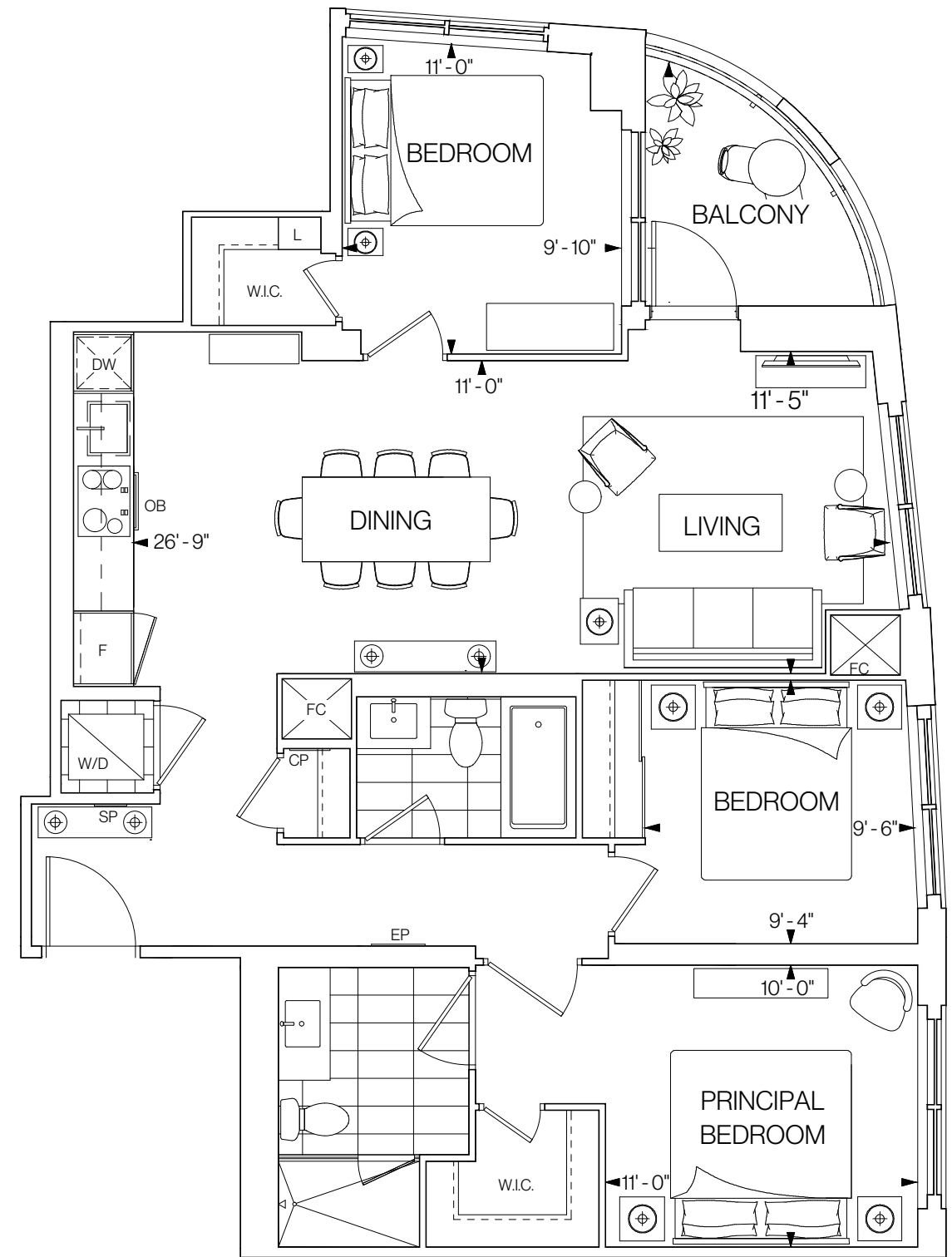
NORTH FACING

FLOOR 6

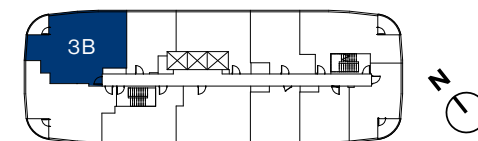


FLOORS 7-12





FLOORS 14-20



N 3B

1,118 SQ.FT.

3 BEDROOMS 2 BATHROOMS

NORTH FACING