

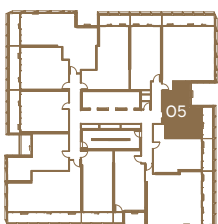
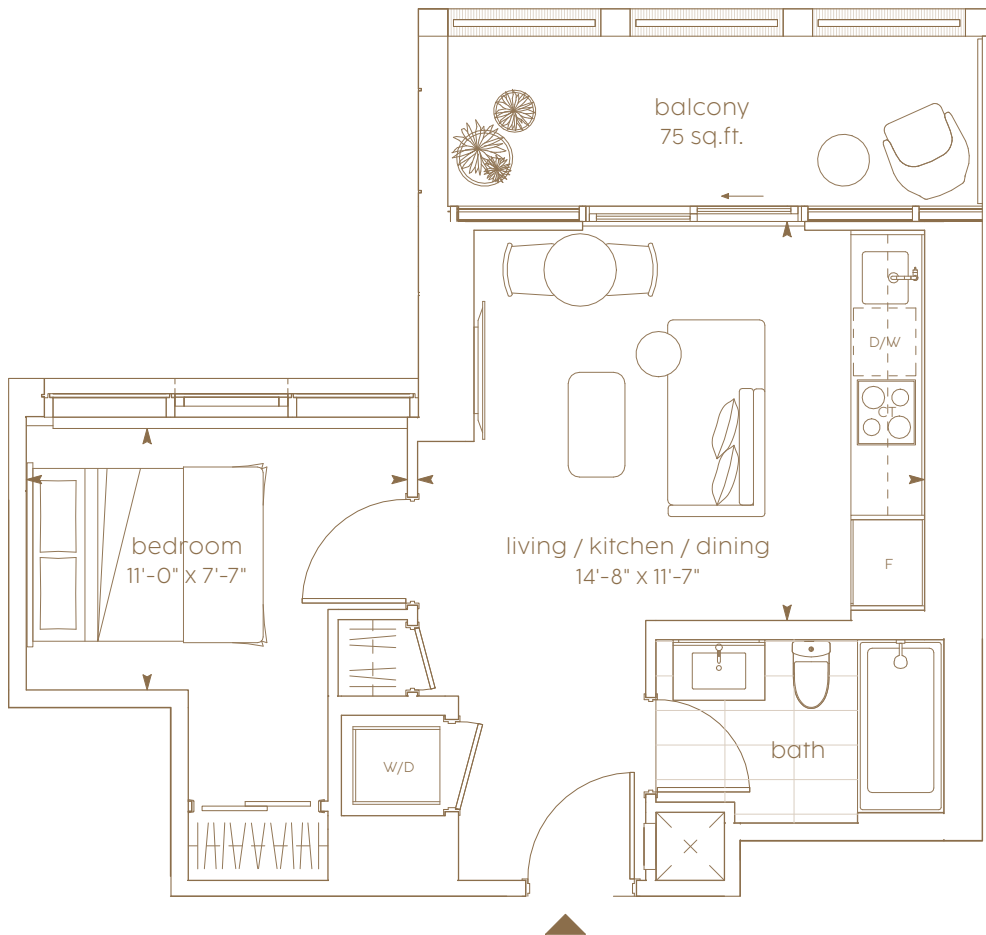
B - 01

1 bedroom

interior living area | 445 sf

outdoor living area | 75 sf

total living area | 520 sf



levels 9-12 & 15-23



*Prices, sizes and specifications subject to change without notice. E.&O.E. The dimensions shown of this plan are approximate and subject to normal construction variances. Actual useable floor space within the unit may vary from any stated floor areas or dimensions on this plan. Furniture is displayed for illustration purposes only and does not necessarily reflect the electrical, cable or internet outlets. Suites are sold unfurnished. For more information on the method used for calculating the floor area of any unit, reference should be made to Home Construction Regulatory Authority ("HCRA") Directive.

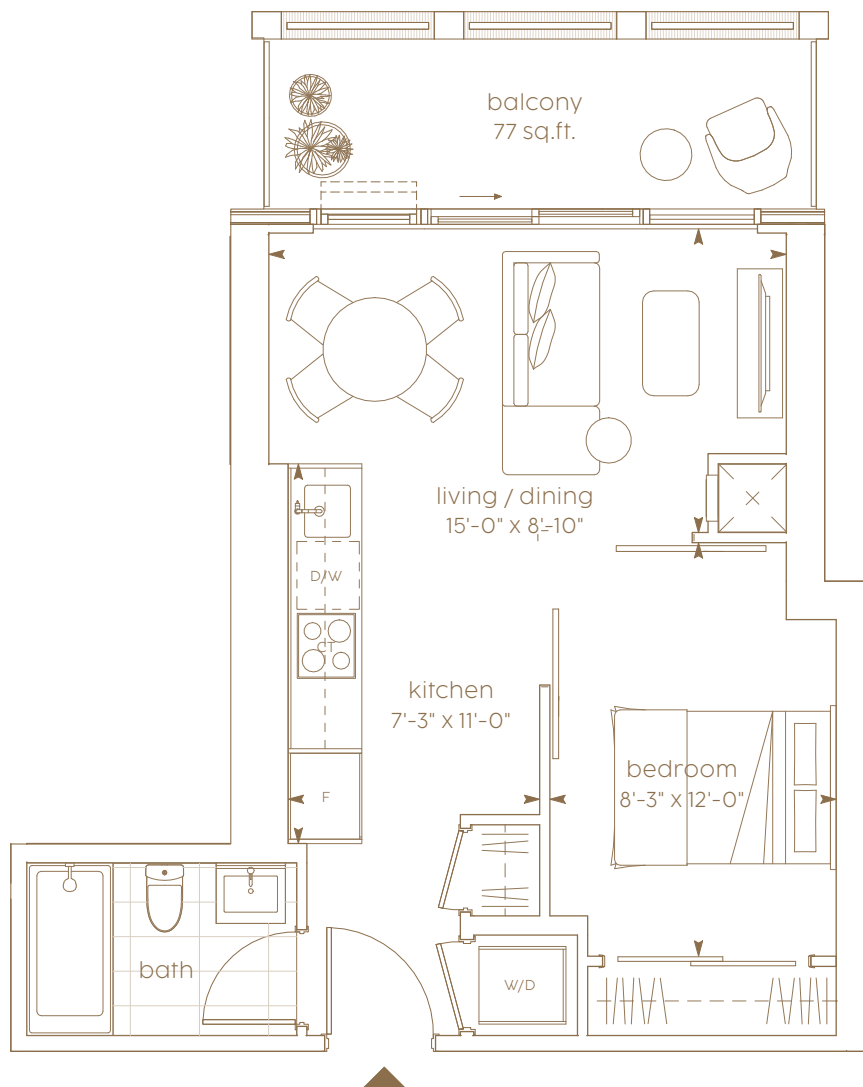
B-02

1 bedroom

interior living area | 453 sf

outdoor living area | 77 sf

total living area | 530 sf



levels 9-12 & 15-23



*Prices, sizes and specifications subject to change without notice. E.&O.E. The dimensions shown of this plan are approximate and subject to normal construction variances. Actual useable floor space within the unit may vary from any stated floor areas or dimensions on this plan. Furniture is displayed for illustration purposes only and does not necessarily reflect the electrical, cable or internet outlets. Suites are sold unfurnished. For more information on the method used for calculating the floor area of any unit, reference should be made to Home Construction Regulatory Authority ("HCRA") Directive.

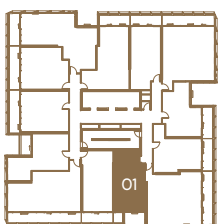
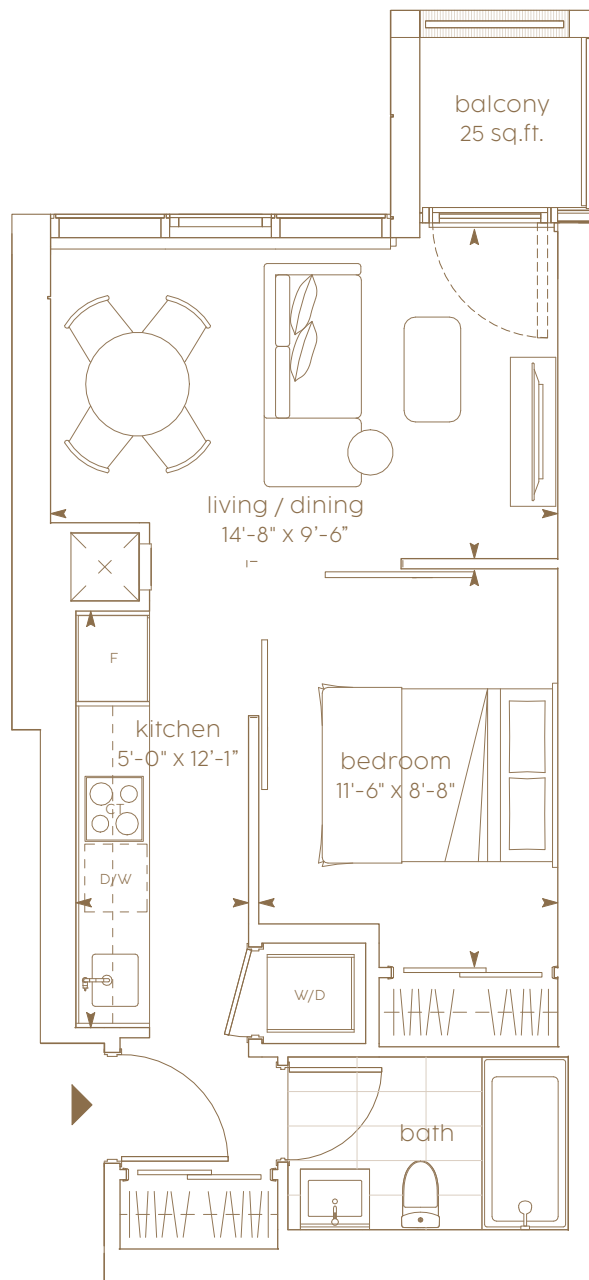
B - 04

1 bedroom

interior living area | 472 sf

outdoor living area | 25 sf

total living area | 497 sf



levels 9-12 & 15-23



*Prices, sizes and specifications subject to change without notice. E.&O.E. The dimensions shown of this plan are approximate and subject to normal construction variances. Actual useable floor space within the unit may vary from any stated floor areas or dimensions on this plan. Furniture is displayed for illustration purposes only and does not necessarily reflect the electrical, cable or internet outlets. Suites are sold unfurnished. For more information on the method used for calculating the floor area of any unit, reference should be made to Home Construction Regulatory Authority ("HCRA") Directive.

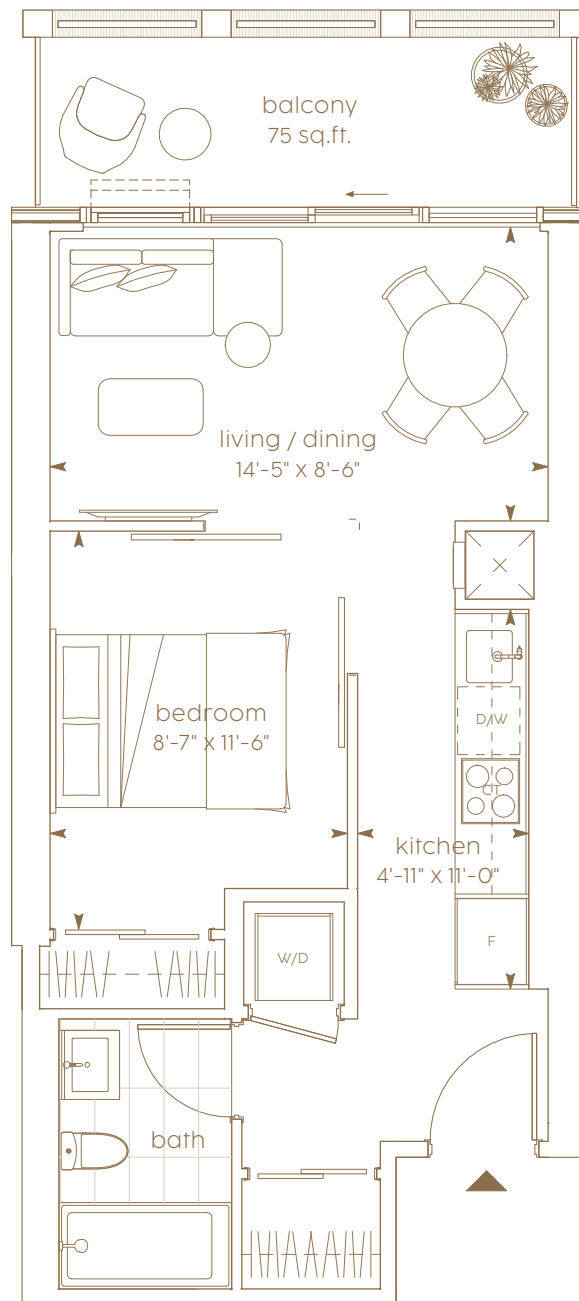
B-07

1 bedroom

interior living area | 476 sf

outdoor living area | 75 sf

total living area | 551 sf



levels 9-12 & 15-23



*Prices, sizes and specifications subject to change without notice. E.&O.E. The dimensions shown of this plan are approximate and subject to normal construction variances. Actual useable floor space within the unit may vary from any stated floor areas or dimensions on this plan. Furniture is displayed for illustration purposes only and does not necessarily reflect the electrical, cable or internet outlets. Suites are sold unfurnished. For more information on the method used for calculating the floor area of any unit, reference should be made to Home Construction Regulatory Authority ("HCRA") Directive.

CIELO

300 BLOOR STREET WEST

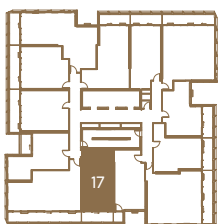
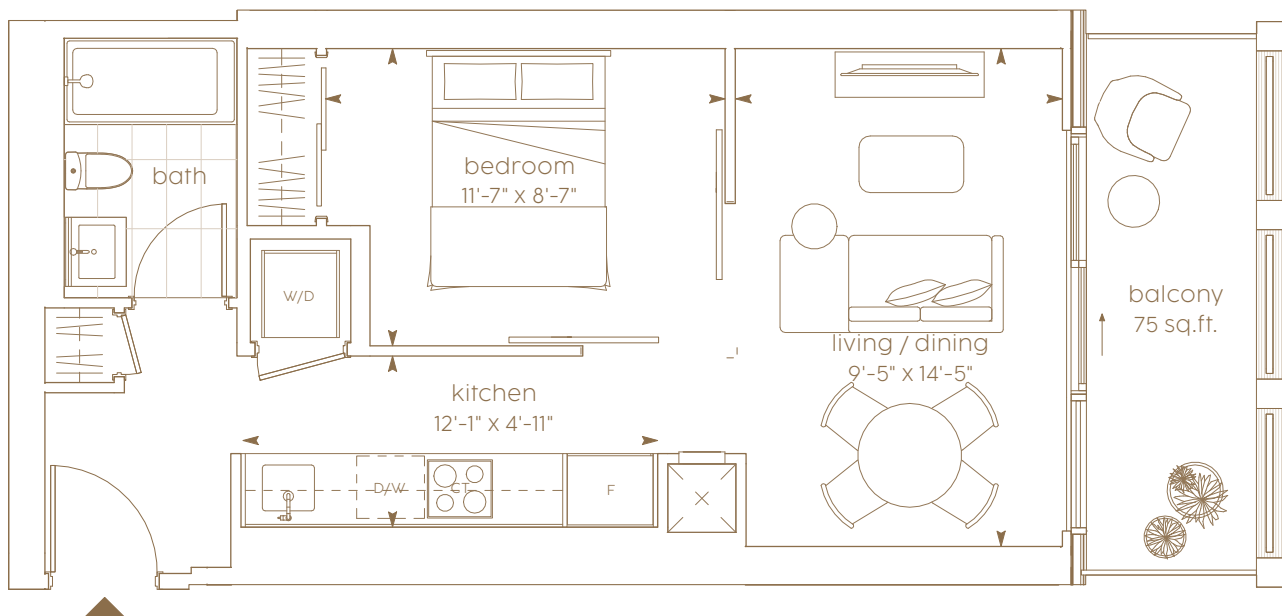
B - 08

1 bedroom

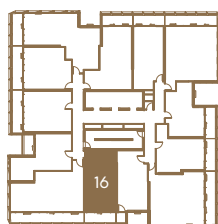
interior living area | 489 sf

outdoor living area | 75 sf

total living area | 564 sf



level 9



levels 10-12 & 15-23



*Prices, sizes and specifications subject to change without notice. E.&O.E. The dimensions shown of this plan are approximate and subject to normal construction variances. Actual useable floor space within the unit may vary from any stated floor areas or dimensions on this plan. Furniture is displayed for illustration purposes only and does not necessarily reflect the electrical, cable or internet outlets. Suites are sold unfurnished. For more information on the method used for calculating the floor area of any unit, reference should be made to Home Construction Regulatory Authority ("HCRA") Directive.



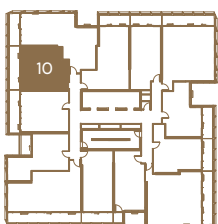
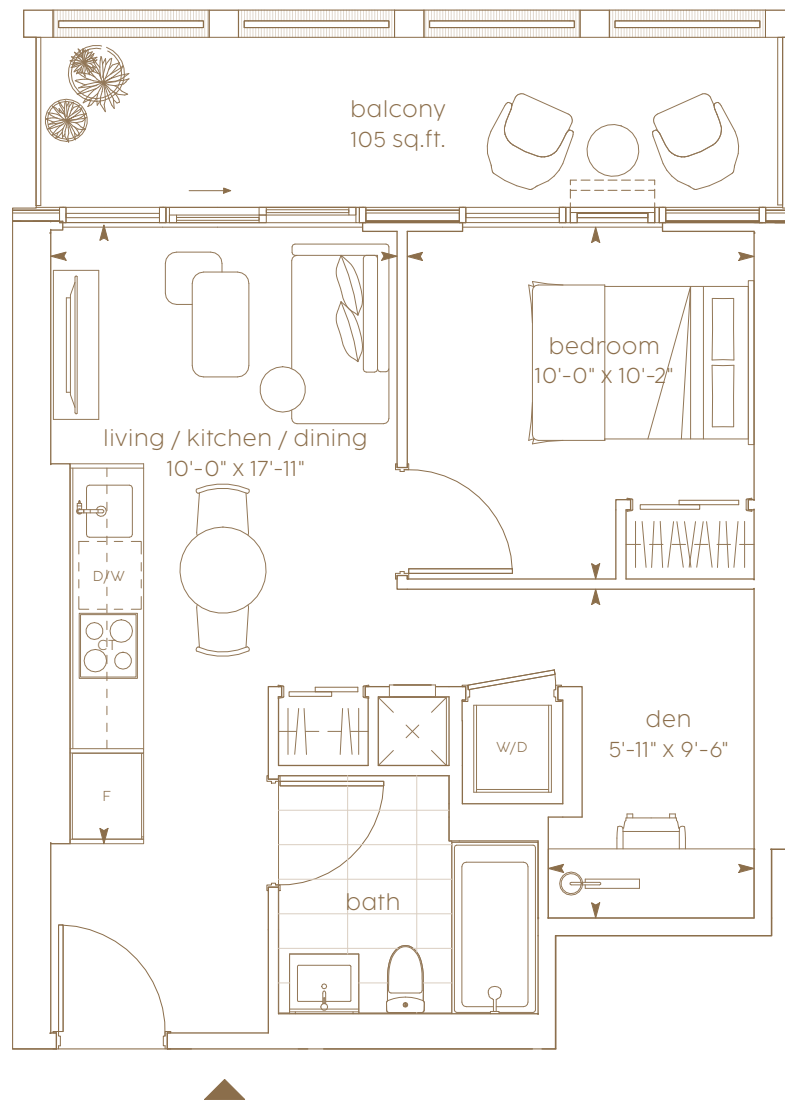
C-01

1 bedroom + den

interior living area | 498 sf

outdoor living area | 105 sf

total living area | 603 sf



levels 9-12 & 15-23

*Prices, sizes and specifications subject to change without notice. E.&O.E. The dimensions shown of this plan are approximate and subject to normal construction variances. Actual useable floor space within the unit may vary from any stated floor areas or dimensions on this plan. Furniture is displayed for illustration purposes only and does not necessarily reflect the electrical, cable or internet outlets. Suites are sold unfurnished. For more information on the method used for calculating the floor area of any unit, reference should be made to Home Construction Regulatory Authority ("HCRA") Directive.

CIELO

300 BLOOR STREET WEST

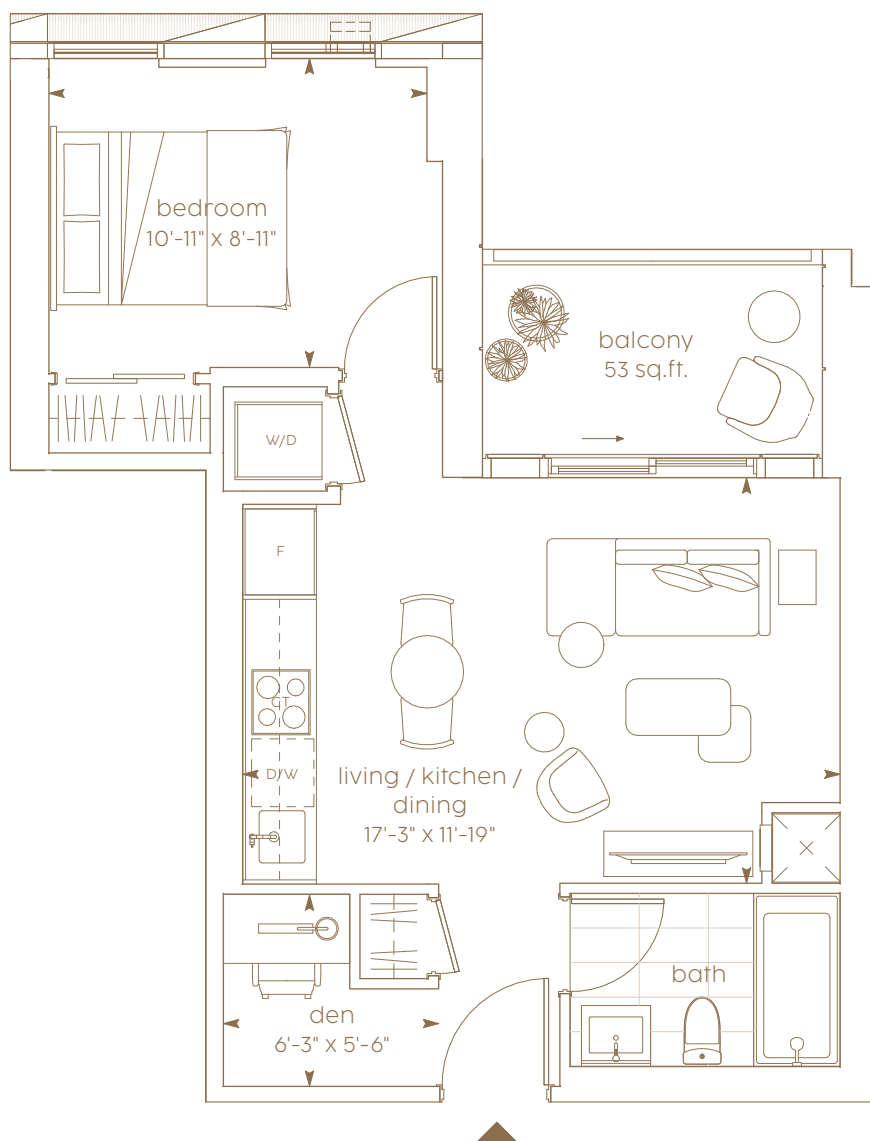
C-04

1 bedroom + den

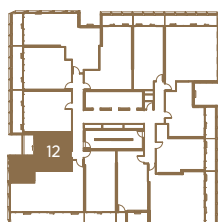
interior living area | 509 sf

outdoor living area | 53 sf

total living area | 562 sf



level 9



levels 10-12 & 15-23



*Prices, sizes and specifications subject to change without notice. E.&O.E. The dimensions shown of this plan are approximate and subject to normal construction variances. Actual useable floor space within the unit may vary from any stated floor areas or dimensions on this plan. Furniture is displayed for illustration purposes only and does not necessarily reflect the electrical, cable or internet outlets. Suites are sold unfurnished. For more information on the method used for calculating the floor area of any unit, reference should be made to Home Construction Regulatory Authority ("HCRA") Directive.



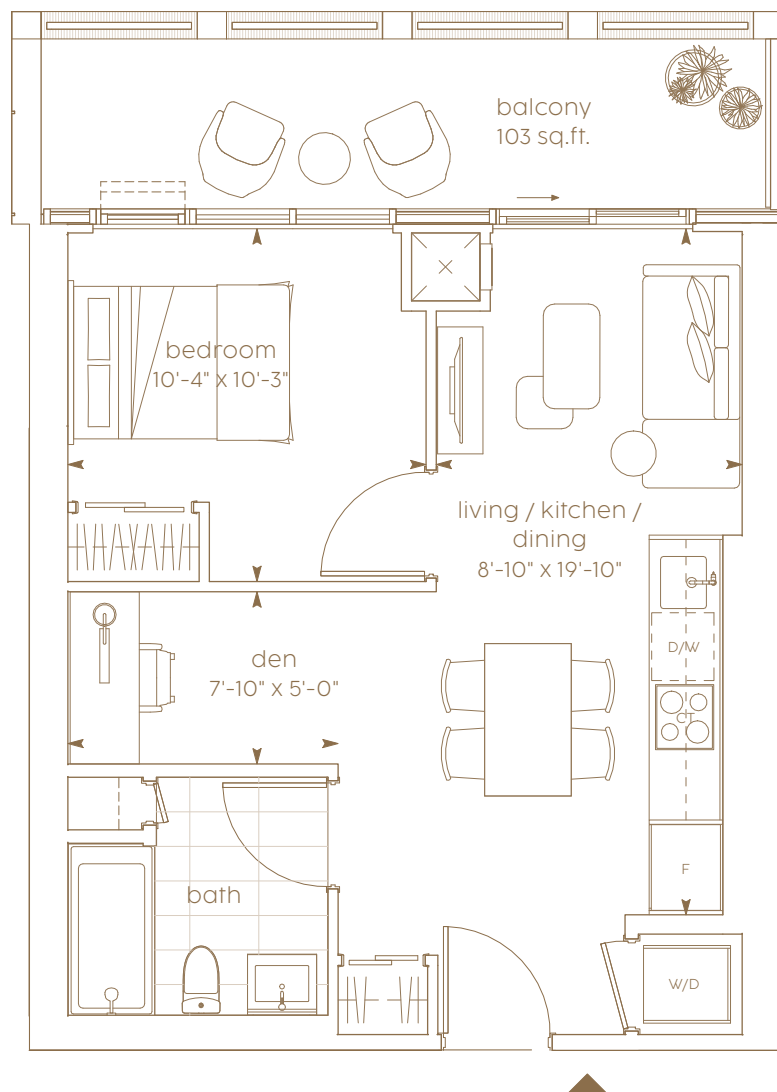
C-05

1 bedroom + den

interior living area | 510 sf

outdoor living area | 103 sf

total living area | 613 sf



level 9



levels 10-12 & 15-23



*Prices, sizes and specifications subject to change without notice. E.&O.E. The dimensions shown of this plan are approximate and subject to normal construction variances. Actual useable floor space within the unit may vary from any stated floor areas or dimensions on this plan. Furniture is displayed for illustration purposes only and does not necessarily reflect the electrical, cable or internet outlets. Suites are sold unfurnished. For more information on the method used for calculating the floor area of any unit, reference should be made to Home Construction Regulatory Authority ("HCRA") Directive.

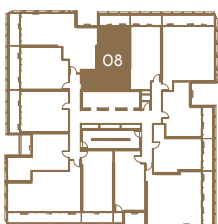
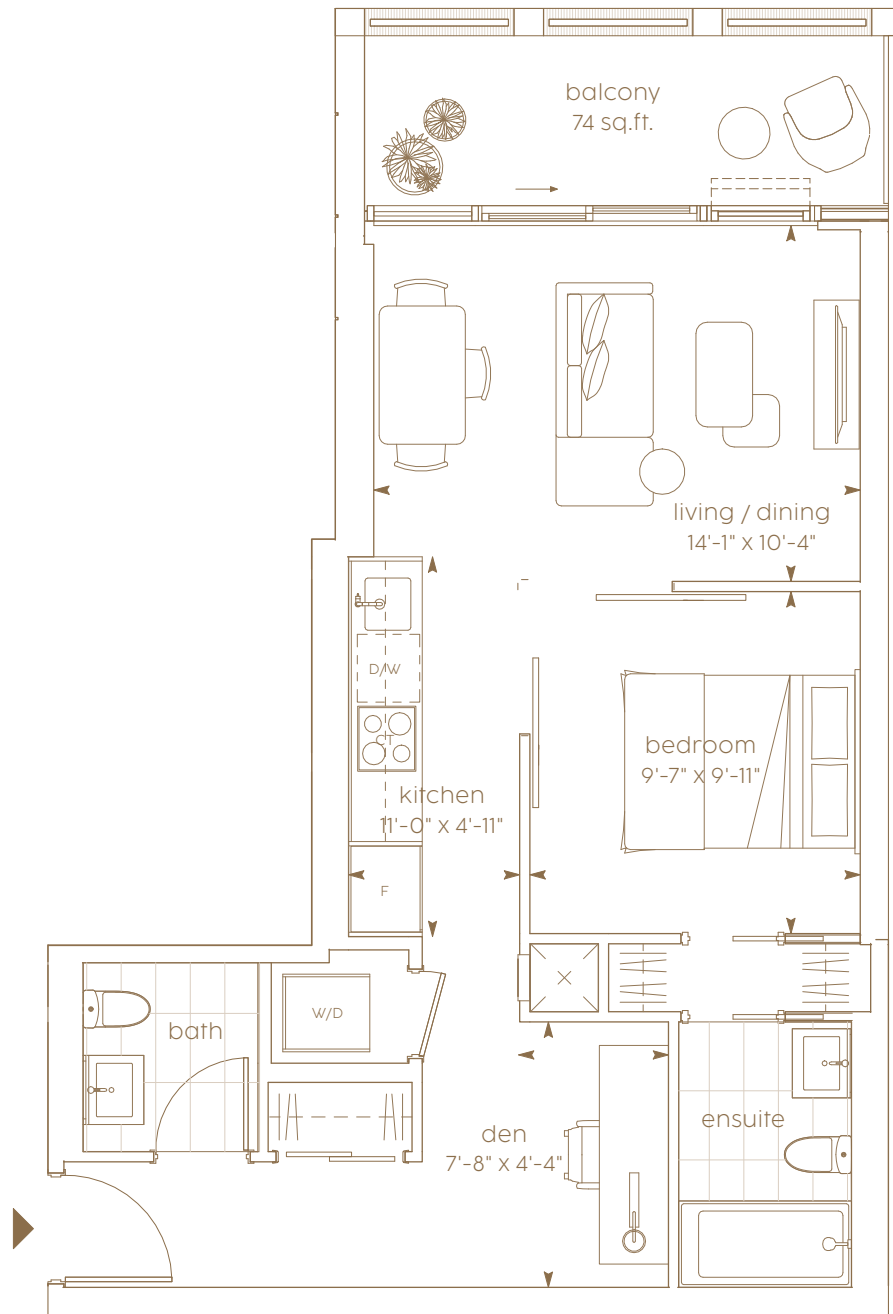
D-02

1 bedroom + den

interior living area | 597 sf

outdoor living area | 74 sf

total living area | 671 sf



levels 9-12 & 15-23



*Prices, sizes and specifications subject to change without notice. E&O.E. The dimensions shown of this plan are approximate and subject to normal construction variances. Actual useable floor space within the unit may vary from any stated floor areas or dimensions on this plan. Furniture is displayed for illustration purposes only and does not necessarily reflect the electrical, cable or internet outlets. Suites are sold unfurnished. For more information on the method used for calculating the floor area of any unit, reference should be made to Home Construction Regulatory Authority ("HCRA") Directive.

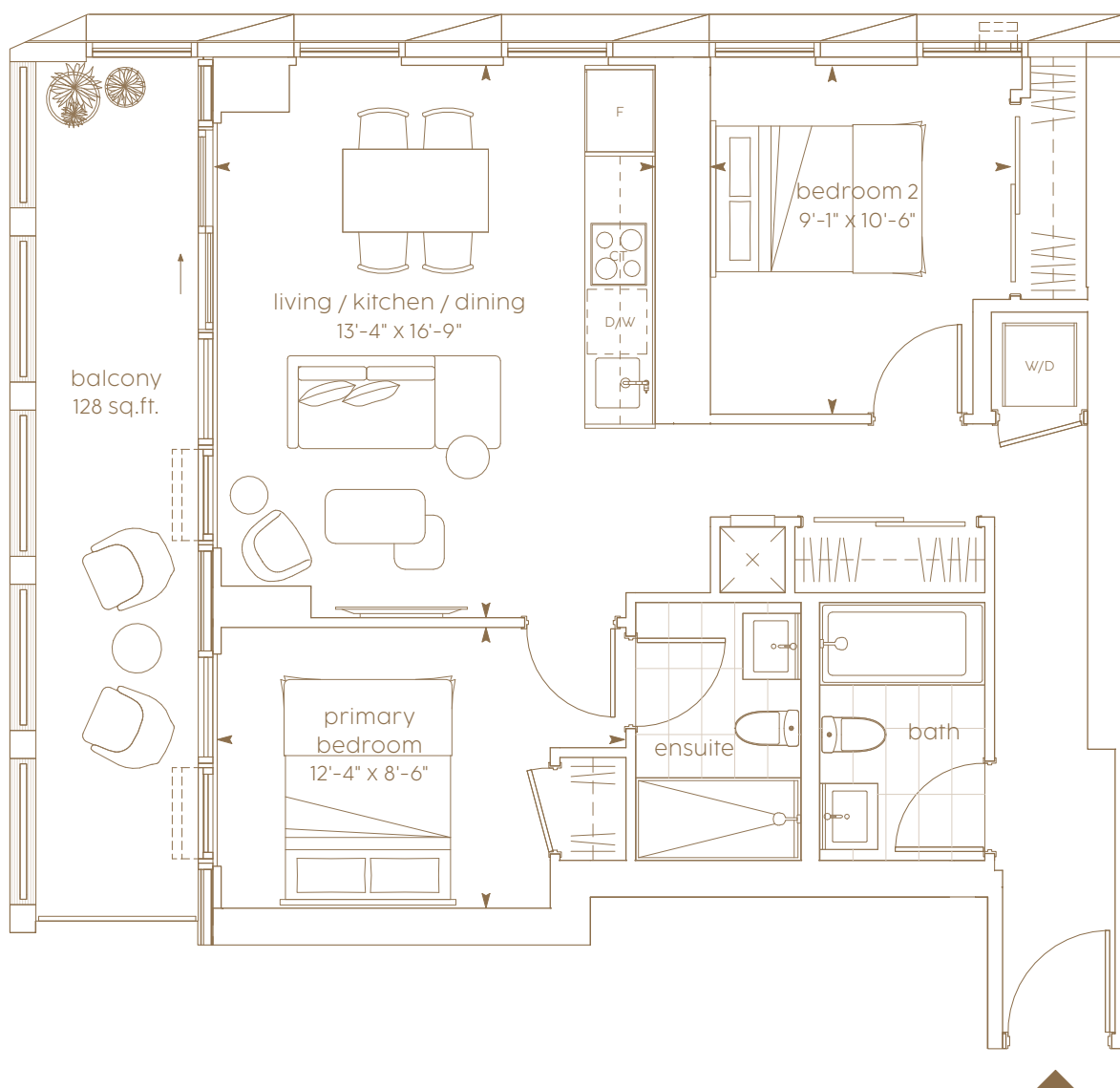
F - 05

2 bedroom

interior living area | 747 sf

outdoor living area | 128 sf

total living area | 875 sf



levels 9-12 & 15-23



*Prices, sizes and specifications subject to change without notice. E.&O.E. The dimensions shown of this plan are approximate and subject to normal construction variances. Actual useable floor space within the unit may vary from any stated floor areas or dimensions on this plan. Furniture is displayed for illustration purposes only and does not necessarily reflect the electrical, cable or internet outlets. Suites are sold unfurnished. For more information on the method used for calculating the floor area of any unit, reference should be made to Home Construction Regulatory Authority ("HCRA") Directive.

CIELO

300 BLOOR STREET WEST

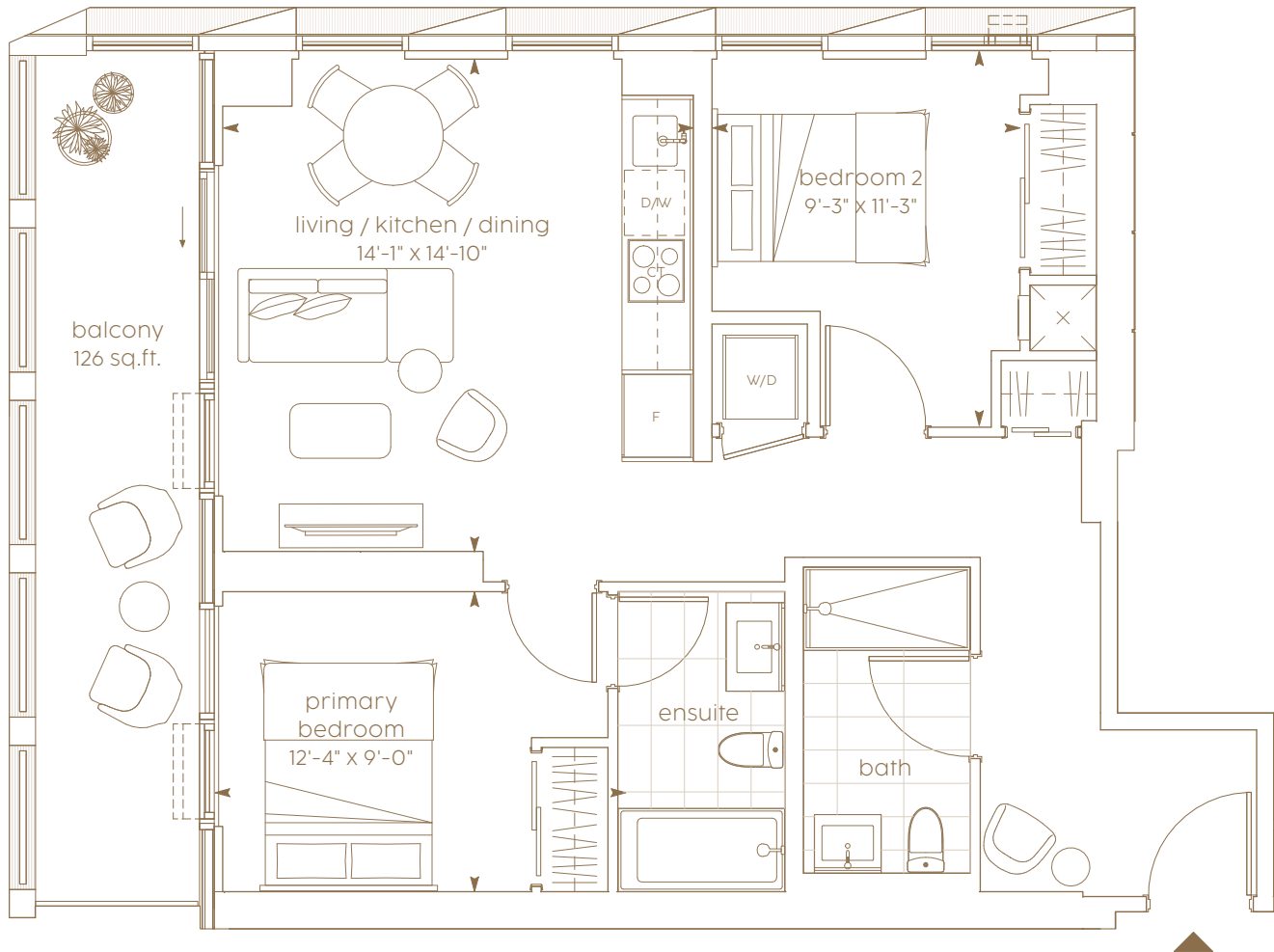
F-06

2 bedroom

interior living area | 760 sf

outdoor living area | 126 sf

total living area | 886 sf



levels 9-12 & 15-23



*Prices, sizes and specifications subject to change without notice. E.&O.E. The dimensions shown of this plan are approximate and subject to normal construction variances. Actual useable floor space within the unit may vary from any stated floor areas or dimensions on this plan. Furniture is displayed for illustration purposes only and does not necessarily reflect the electrical, cable or internet outlets. Suites are sold unfurnished. For more information on the method used for calculating the floor area of any unit, reference should be made to Home Construction Regulatory Authority ("HCRA") Directive.



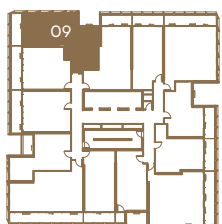
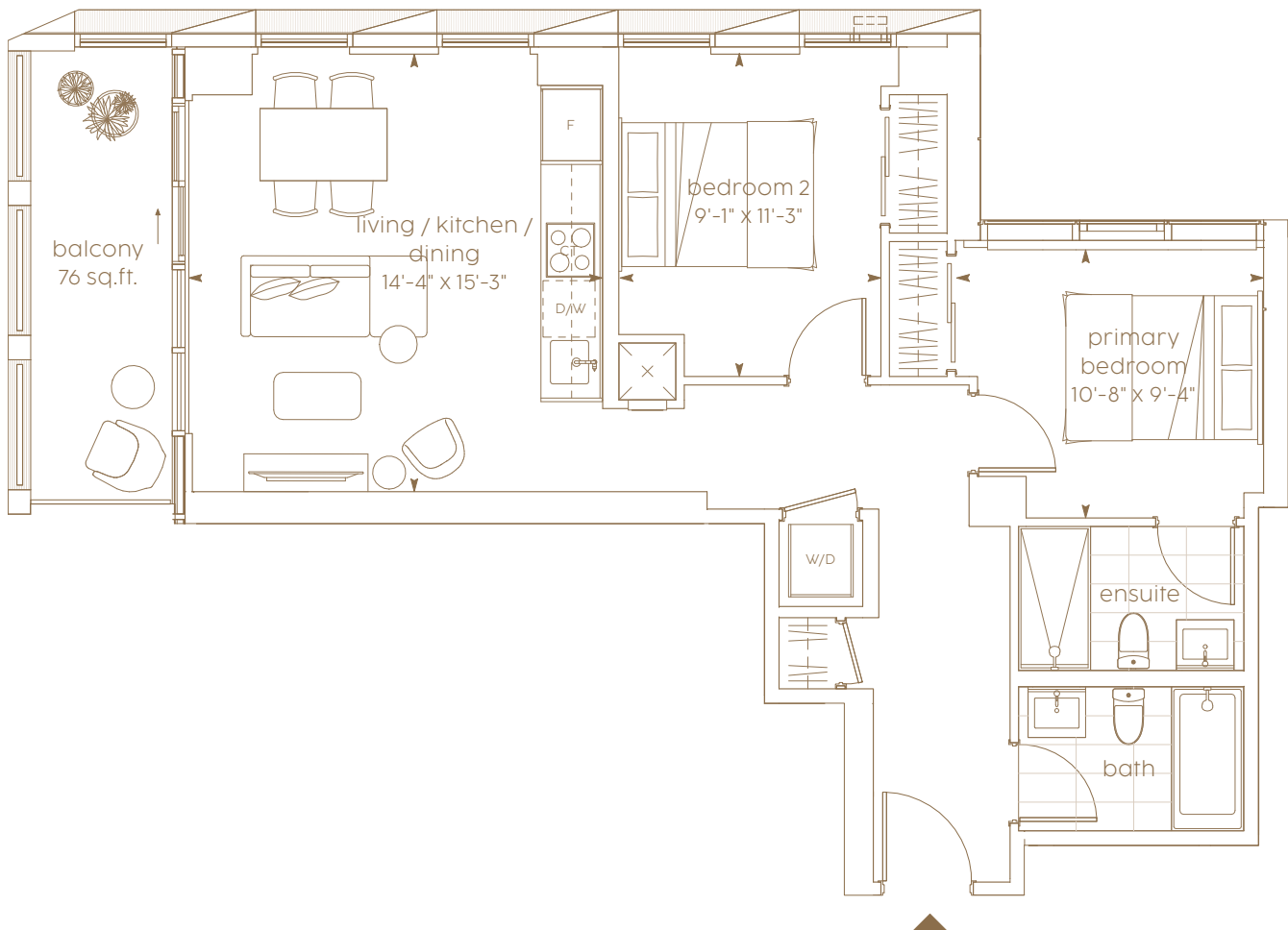
F - 08

2 bedroom

interior living area | 760 sf

outdoor living area | 76 sf

total living area | 836 sf



levels 9-12 & 15-23



*Prices, sizes and specifications subject to change without notice. E.&O.E. The dimensions shown of this plan are approximate and subject to normal construction variances. Actual useable floor space within the unit may vary from any stated floor areas or dimensions on this plan. Furniture is displayed for illustration purposes only and does not necessarily reflect the electrical, cable or internet outlets. Suites are sold unfurnished. For more information on the method used for calculating the floor area of any unit, reference should be made to Home Construction Regulatory Authority ("HCRA") Directive.

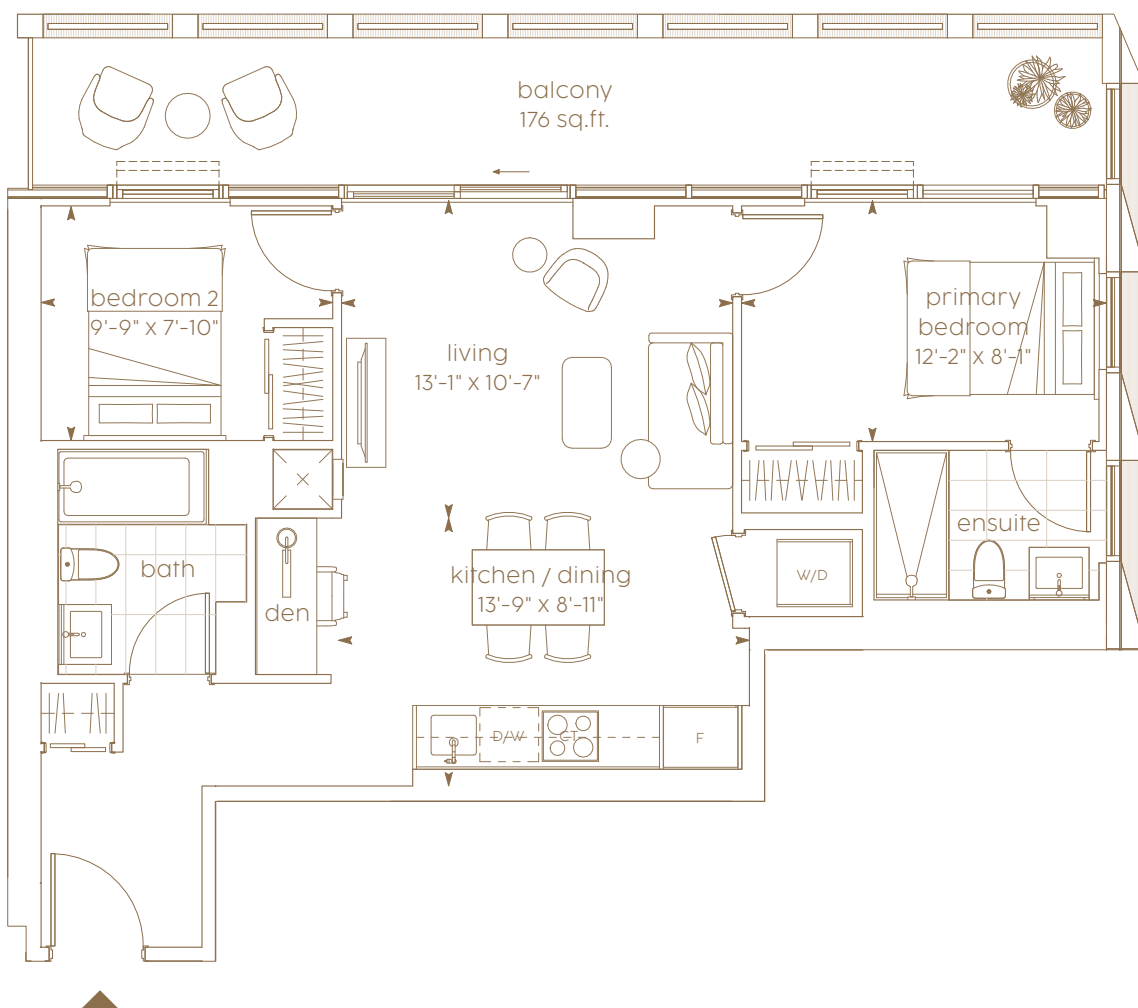
G-03

2 bedroom

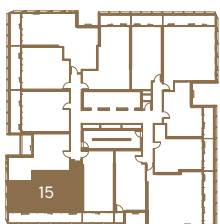
interior living area | 716 sf

outdoor living area | 176 sf

total living area | 892 sf



level 9



levels 10-12 & 15-23



*Prices, sizes and specifications subject to change without notice. E.&O.E. The dimensions shown of this plan are approximate and subject to normal construction variances. Actual useable floor space within the unit may vary from any stated floor areas or dimensions on this plan. Furniture is displayed for illustration purposes only and does not necessarily reflect the electrical, cable or internet outlets. Suites are sold unfurnished. For more information on the method used for calculating the floor area of any unit, reference should be made to Home Construction Regulatory Authority ("HCRA") Directive.

CIELO

300 BLOOR STREET WEST

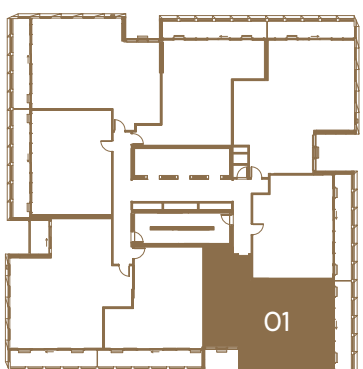
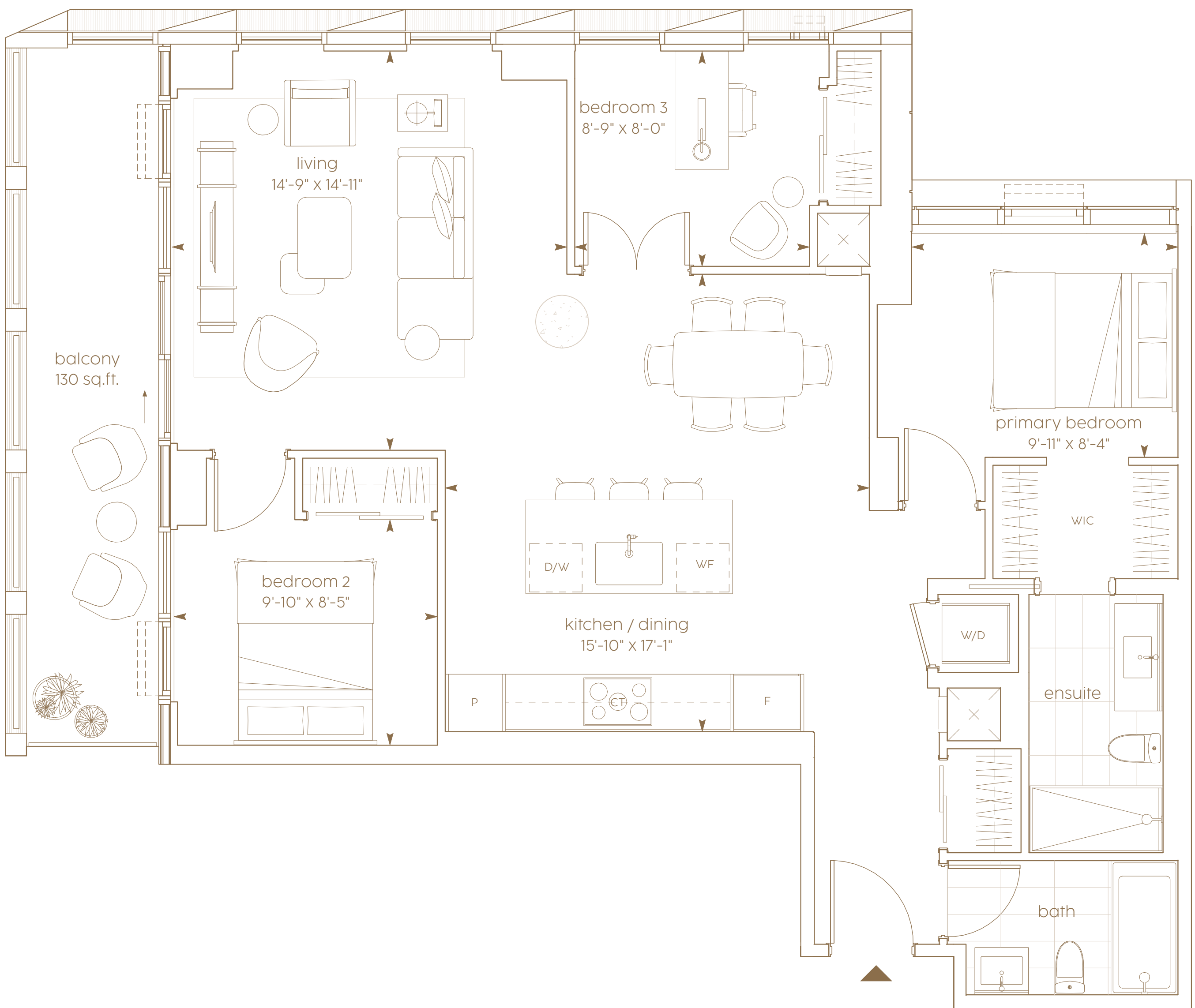
BEDFORD

3 bedroom

interior living area | 1,104 sf

outdoor living area | 130 sf

total living area | 1,234 sf



level 25-lower penthouse



*Prices, sizes and specifications subject to change without notice. E.&O.E.
The dimensions shown of this plan are approximate and subject to normal construction variances. Actual useable floor space within the unit may vary from any stated floor areas or dimensions on this plan. Furniture is displayed for illustration purposes only and does not necessarily reflect the electrical, cable or internet outlets. Suites are sold unfurnished. For more information on the method used for calculating the floor area of any unit, reference should be made to Home Construction Regulatory Authority ("HCR") Directive.

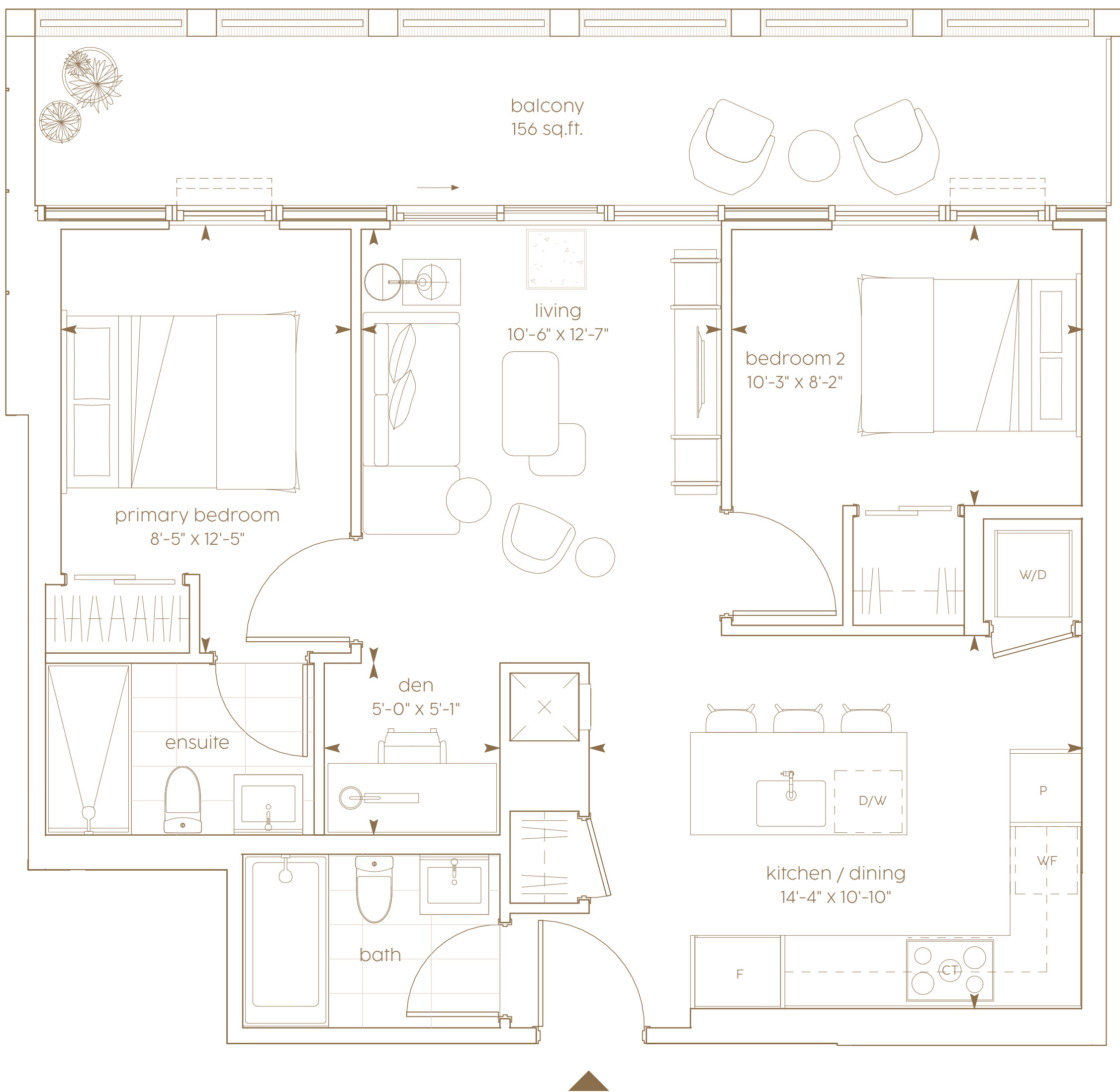


BERNARD

2 bedroom + den

interior living area | 726 sf

outdoor living area | 156 sf

total living area | 882 sf

level 25-lower penthouse



*Prices, sizes and specifications subject to change without notice. E.&O.E.
The dimensions shown of this plan are approximate and subject to normal construction variances. Actual useable floor space within the unit may vary from any stated floor areas or dimensions on this plan. Furniture is displayed for illustration purposes only and does not necessarily reflect the electrical, cable or internet outlets. Suites are sold unfurnished. For more information on the method used for calculating the floor area of any unit, reference should be made to Home Construction Regulatory Authority ("HCRA") Directive.

CIELO

300 BLOOR STREET WEST

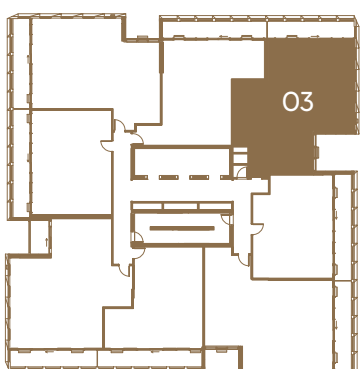
BRUNSWICK

3 bedroom

interior living area | 1,163 sf

outdoor living area | 127 sf

total living area | 1,290 sf



level 25-lower penthouse



*Prices, sizes and specifications subject to change without notice. E.&O.E.
The dimensions shown of this plan are approximate and subject to normal construction variances. Actual useable floor space within the unit may vary from any stated floor areas or dimensions on this plan. Furniture is displayed for illustration purposes only and does not necessarily reflect the electrical, cable or internet outlets. Suites are sold unfurnished. For more information on the method used for calculating the floor area of any unit, reference should be made to Home Construction Regulatory Authority ("HCRA") Directive.



total living area | 1,006 sf



*Prices, sizes and specifications subject to change without notice. E.&O.E. The dimensions shown of this plan are approximate and subject to normal construction variances. Actual useable floor space within the unit may vary from any stated floor areas or dimensions on this plan. Furniture is displayed for illustration purposes only and does not necessarily reflect the electrical, cable or internet outlets. Suites are sold unfurnished. For more information on the method used for calculating the floor area of any unit, reference should be made to Home Construction Regulatory Authority ("HCRA") Directive.

CIELO

300 BLOOR STREET WEST

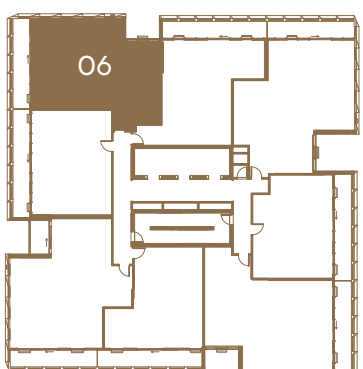
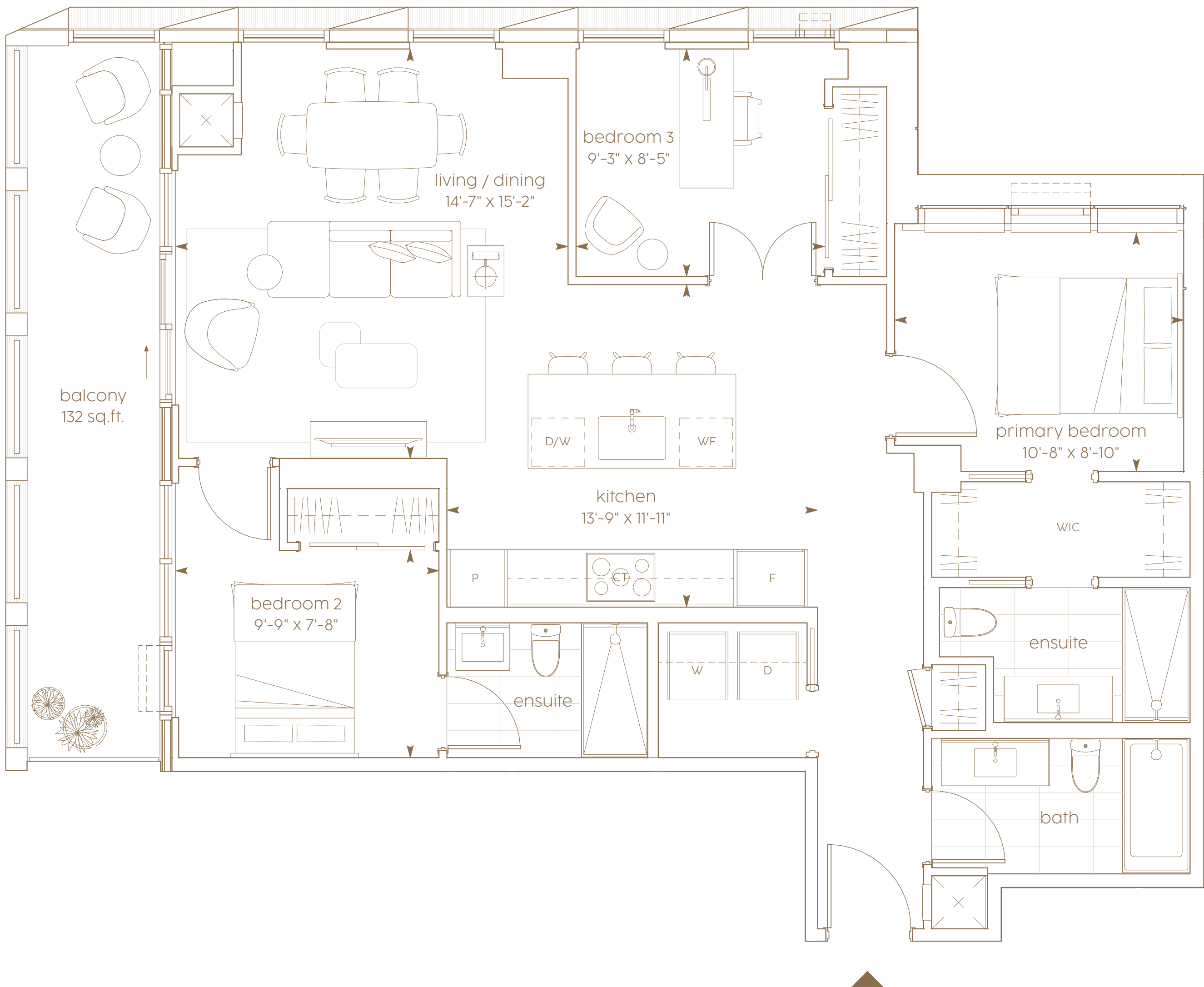
KENDAL

3 bedroom

interior living area | 1,062 sf

outdoor living area | 132 sf

total living area | 1,194 sf



level 25-lower penthouse



*Prices, sizes and specifications subject to change without notice. E.&O.E.
The dimensions shown of this plan are approximate and subject to normal construction variances. Actual useable floor space within the unit may vary from any stated floor areas or dimensions on this plan. Furniture is displayed for illustration purposes only and does not necessarily reflect the electrical, cable or internet outlets. Suites are sold unfurnished. For more information on the method used for calculating the floor area of any unit, reference should be made to Home Construction Regulatory Authority ("HCRA") Directive.



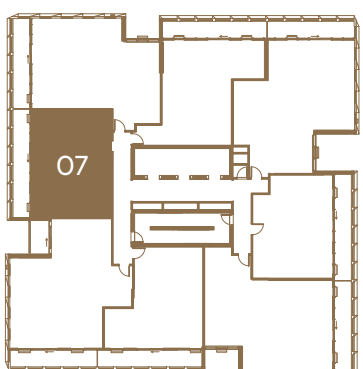
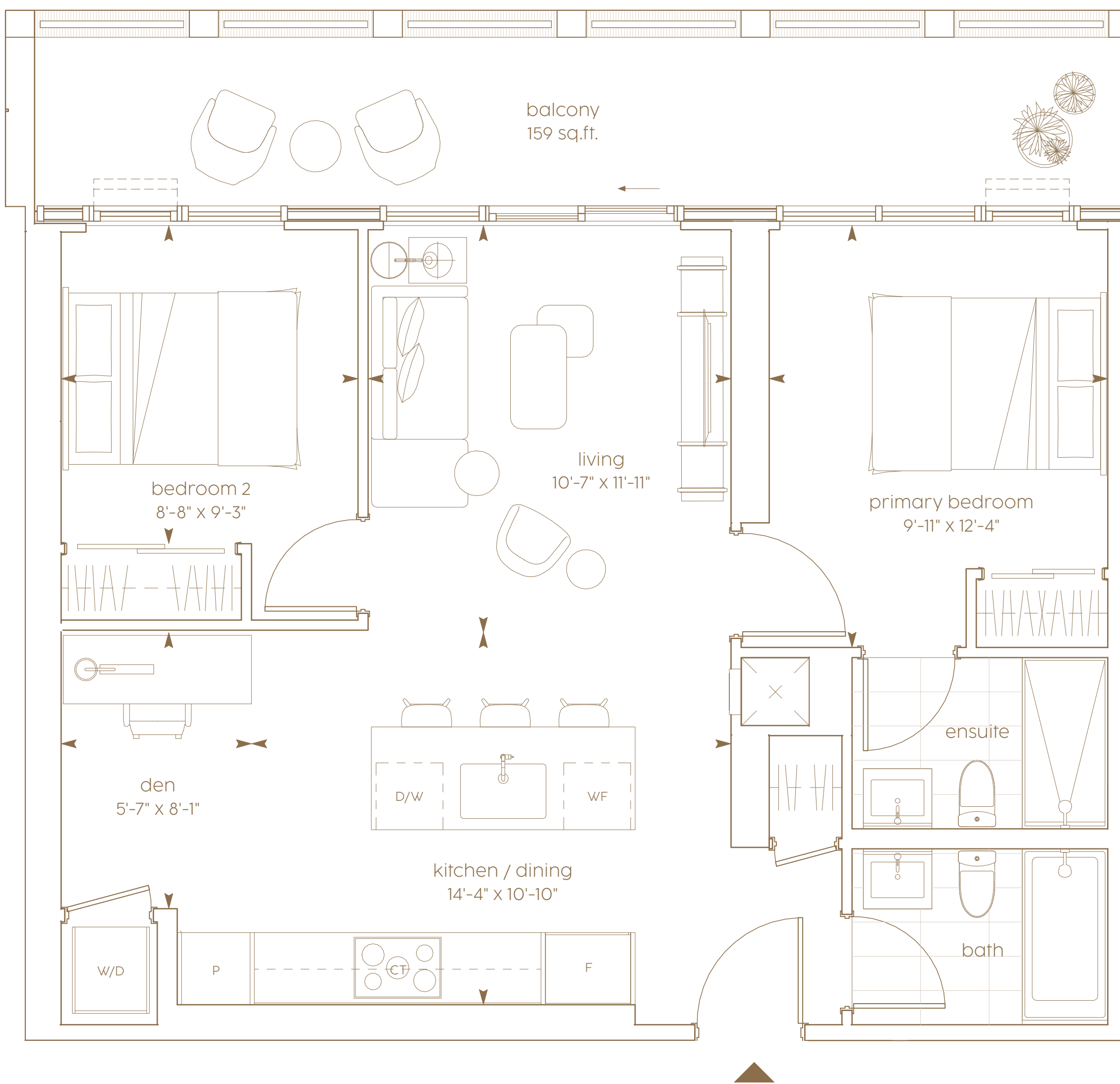
LOWTHER

2 bedroom + den

interior living area | 769 sf

outdoor living area | 159 sf

total living area | 928 sf



level 25-lower penthouse



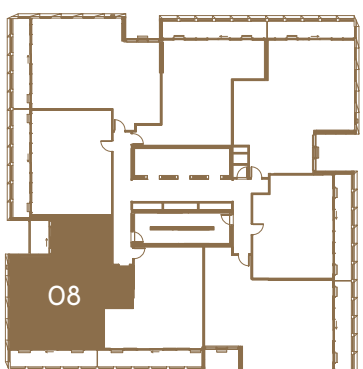
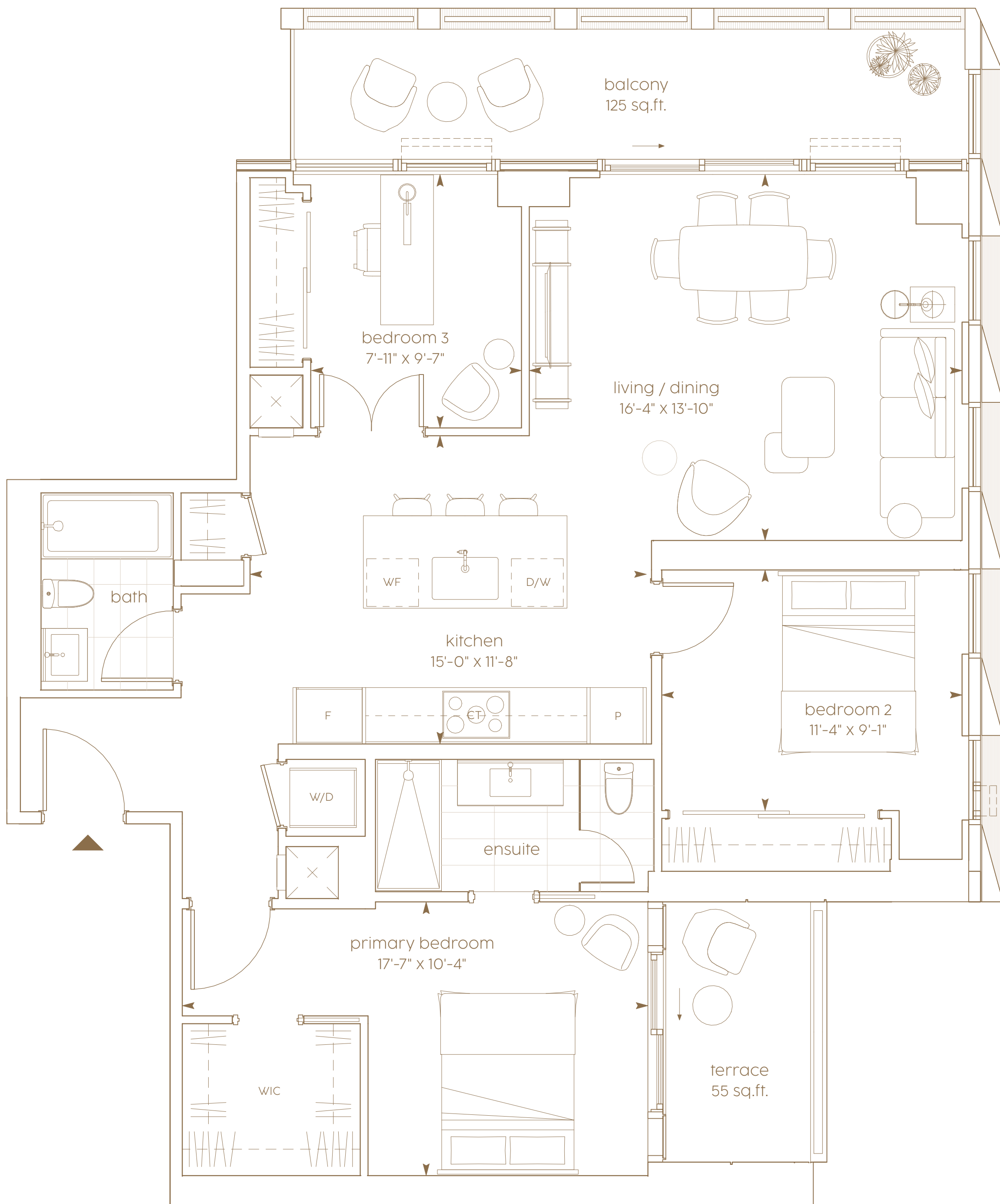
*Prices, sizes and specifications subject to change without notice. E.&O.E.
The dimensions shown of this plan are approximate and subject to normal construction variances. Actual useable floor space within the unit may vary from any stated floor areas or dimensions on this plan. Furniture is displayed for illustration purposes only and does not necessarily reflect the electrical, cable or internet outlets. Suites are sold unfurnished. For more information on the method used for calculating the floor area of any unit, reference should be made to Home Construction Regulatory Authority ("HCR") Directive.

MADISON

3 bedroom

interior living area | 1,113 sf

outdoor living area | 180 sf

total living area | 1,293 sf

level 25-lower penthouse



*Prices, sizes and specifications subject to change without notice. E.&O.E.
The dimensions shown of this plan are approximate and subject to normal construction variances. Actual useable floor space within the unit may vary from any stated floor areas or dimensions on this plan. Furniture is displayed for illustration purposes only and does not necessarily reflect the electrical, cable or internet outlets. Suites are sold unfurnished. For more information on the method used for calculating the floor area of any unit, reference should be made to Home Construction Regulatory Authority ("HCR") Directive.

CIELO

300 BLOOR STREET WEST

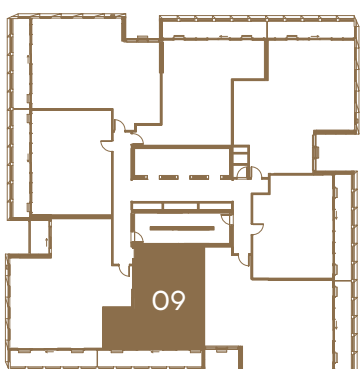
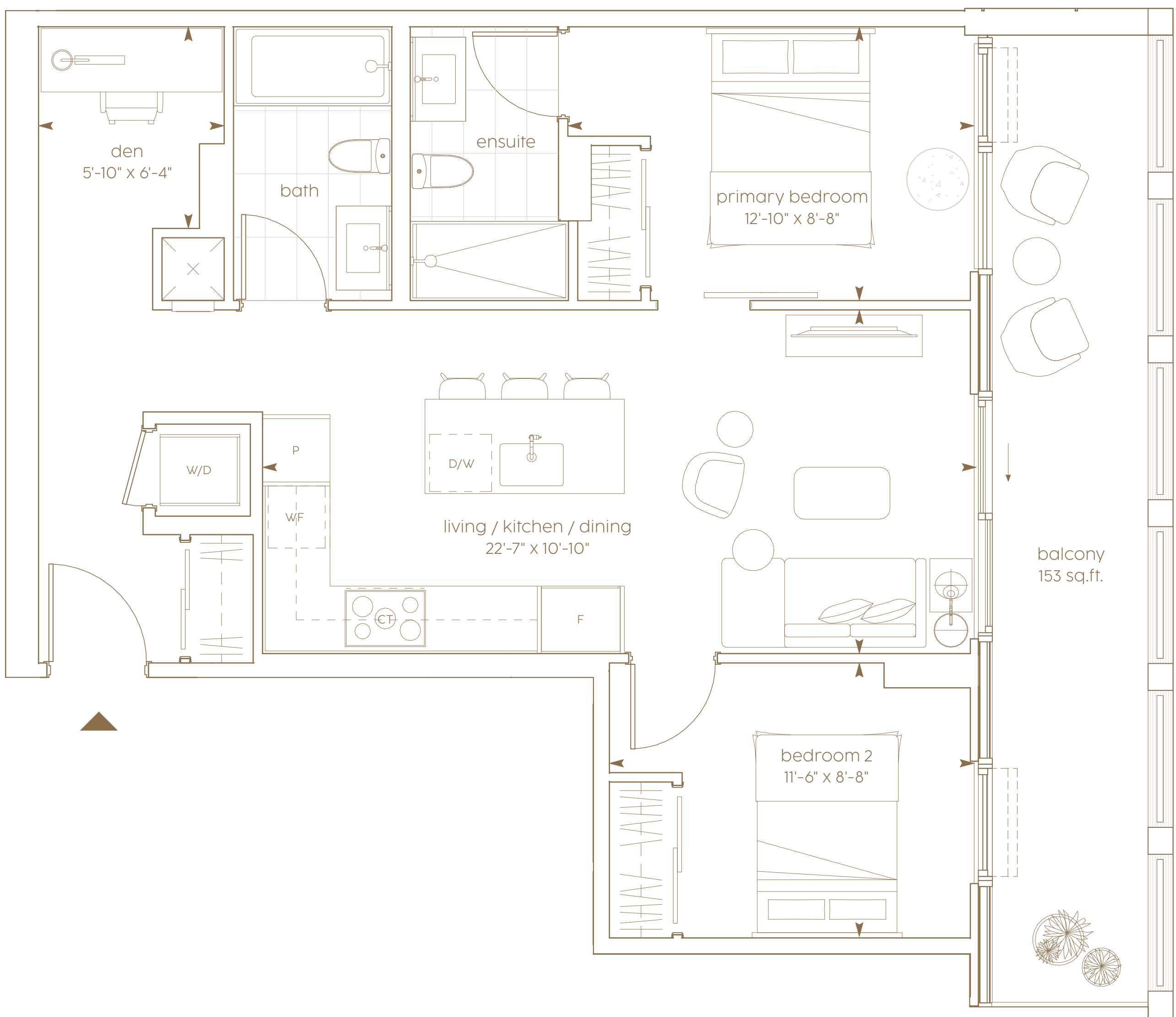
WALMER

2 bedroom + den

interior living area | 753 sf

outdoor living area | 153 sf

total living area | 906 sf



level 25-lower penthouse



*Prices, sizes and specifications subject to change without notice. E.&O.E.
The dimensions shown of this plan are approximate and subject to normal construction variances. Actual useable floor space within the unit may vary from any stated floor areas or dimensions on this plan. Furniture is displayed for illustration purposes only and does not necessarily reflect the electrical, cable or internet outlets. Suites are sold unfurnished. For more information on the method used for calculating the floor area of any unit, reference should be made to Home Construction Regulatory Authority ("HCR") Directive.

